

Mouse IgG2b, kappa monoclonal [7E10G10] - Isotype Control ab170192

5 References **画像数 3**

製品の概要

製品名	Mouse IgG2b, kappa monoclonal [7E10G10] - Isotype Control
特異性	ab170192, mouse IgG2b Isotype Control Antibody was raised in mouse against a yeast-specific protein making it unsuitable for yeast experiments.
アプリケーション	適用あり: Flow Cyt, ICC/IF, ELISA
特記事項	<p>This antibody clone is manufactured by Abcam.</p> <p>Isotype controls are used to confirm that the primary antibody binding is specific and not a result of non-specific Fc receptor binding or other protein interactions. The isotype control antibody should match the primary antibody's host species, isotype, and possible conjugation. The control performed appropriately in all materials and platforms that were tested.</p> <p>This product was previously marketed under the MitoSciences sub-brand.</p> <p>If you require this antibody in a particular buffer formulation or a particular conjugate for your experiments, please contact orders@abcam.com or you can find further information here.</p> <p>The Life Science industry has been in the grips of a reproducibility crisis for a number of years. Abcam is leading the way in addressing this with our range of recombinant monoclonal antibodies and knockout edited cell lines for gold-standard validation. Please check that this product meets your needs before purchasing.</p> <p>If you have any questions, special requirements or concerns, please send us an inquiry and/or contact our Support team ahead of purchase. Recommended alternatives for this product can be found below, along with publications, customer reviews and Q&As</p>

製品の特性

製品の状態	Liquid
保存方法	Shipped at 4°C. Store at -20°C.
バッファー	<p>pH: 7.5</p> <p>Preservative: 0.02% Sodium azide</p> <p>Constituent: HEPES buffered saline</p>
精製度	Ammonium Sulphate Precipitation
ポリ/モノ	モノクローナル

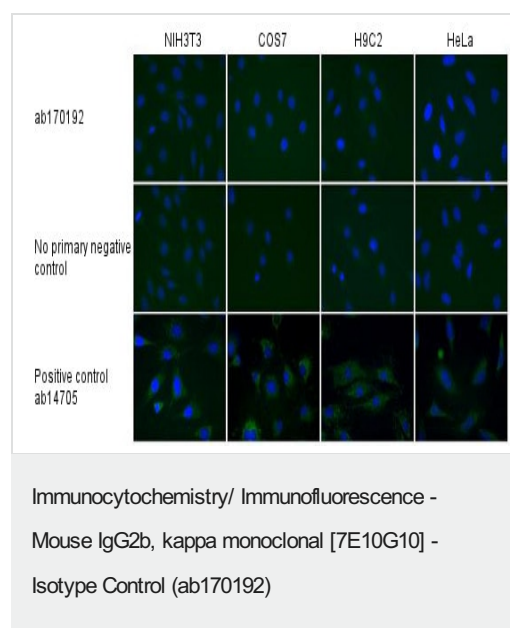
クローン名	7E10G10
アイソタイプ	IgG2b
軽鎖の種類	kappa

アプリケーション

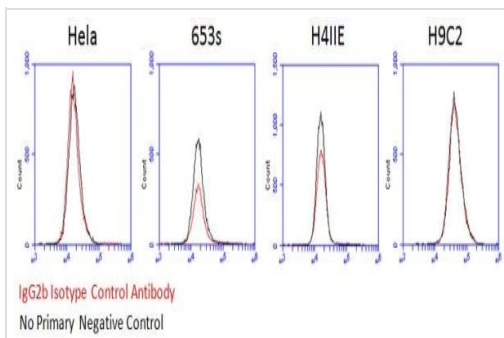
The Abpromise guarantee **Abpromise保証は、**次のテスト済みアプリケーションにおけるab170192の使用に適用されます
アプリケーションノートには、推奨の開始希釈率がありますが、適切な希釈率につきましてはご検討ください。

アプリケーション	Abreviews	特記事項
Flow Cyt		Use a concentration of 1 µg/ml.
ICC/IF		Use a concentration of 1 µg/ml.
ELISA		Use at an assay dependent concentration.

画像

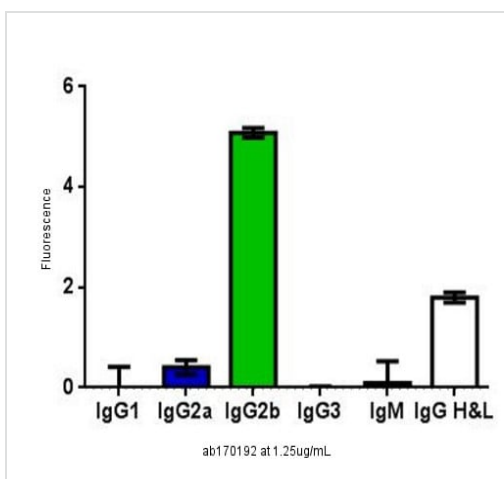


Immunofluorescent analysis of NIH 3T3, COS7, H9C2 and HeLa cells using ab170192 at 1 µg/ml (top); no primary antibody negative control (middle), and **ab14705** as a positive control (bottom). An Alexa Fluor® 488 conjugate with isotype specificity to the mouse antibody was used as a secondary antibody. The isotype control at 1 ug/mL shows no higher signal than the no primary negative control.



Flow cytometry experiments with 4% PFA fixed HeLa (human adenocarcinoma), 653s (mouse myeloma), H4IIE (rat hepatoma) and H9C2 (rat myoblast) were performed with the IgG2b Isotype Control Antibody (red) and no primary antibody negative control (black). An Alexa Fluor® 488 conjugate with isotype specificity to the mouse antibody was used as a secondary antibody.

The isotype control at 1 ug/mL shows no higher signal than the no primary negative control.



An isotyping ELISA was performed by coating a 96-well plate with 1.25 ug/mL ab170192 and detecting with Alexa Fluor® conjugates specific to mouse IgG1, IgG2a, IgG2b, IgG3, IgM and heavy and light chains (H&L) of IgG. This experiment verifies that the primary antibody's isotype is correct and that it is successfully bound by the secondary antibody.

Please note: All products are "FOR RESEARCH USE ONLY. NOT FOR USE IN DIAGNOSTIC PROCEDURES"

Our Abpromise to you: Quality guaranteed and expert technical support

- Replacement or refund for products not performing as stated on the datasheet
- Valid for 12 months from date of delivery
- Response to your inquiry within 24 hours
- We provide support in Chinese, English, French, German, Japanese and Spanish
- Extensive multi-media technical resources to help you
- We investigate all quality concerns to ensure our products perform to the highest standards

If the product does not perform as described on this datasheet, we will offer a refund or replacement. For full details of the Abpromise, please visit <https://www.abcam.co.jp/abpromise> or contact our technical team.

Terms and conditions

- Guarantee only valid for products bought direct from Abcam or one of our authorized distributors