

Mouse IgG - Isotype Control ab37355

[65 References](#) [画像数 1](#)

製品の概要

製品名	Mouse IgG - Isotype Control
特異性	This antibody has been selected as an isotype control as it has no known specificity.
アプリケーション	適用あり: ELISA, Flow Cyt, IHC
特記事項	<p>The Life Science industry has been in the grips of a reproducibility crisis for a number of years. Abcam is leading the way in addressing this with our range of recombinant monoclonal antibodies and knockout edited cell lines for gold-standard validation. Please check that this product meets your needs before purchasing.</p> <p>If you have any questions, special requirements or concerns, please send us an inquiry and/or contact our Support team ahead of purchase. Recommended alternatives for this product can be found below, along with publications, customer reviews and Q&As</p>

製品の特性

製品の状態	Liquid
保存方法	Shipped at 4°C. Upon delivery aliquot. Store at -20°C long term. Avoid freeze / thaw cycle.
バッファー	pH: 8.20 Constituent: 100% Borate buffered saline
精製度	Affinity purified
特記事項(精製)	Purified from normal mouse serum.
ポリ/モノ	ポリクローナル
アイソタイプ	IgG

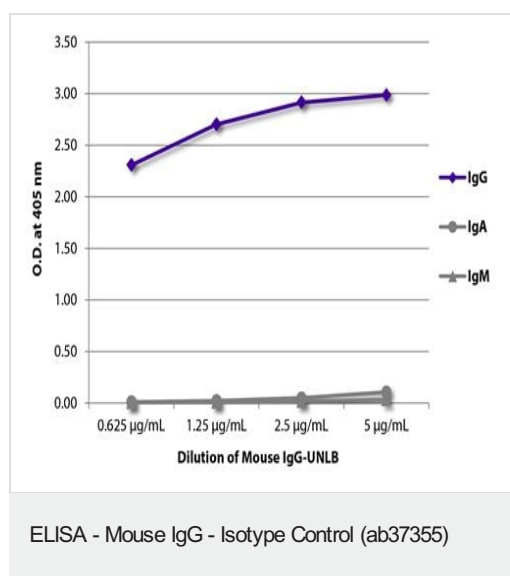
アプリケーション

The Abpromise guarantee **Abpromise保証は、次のテスト済みアプリケーションにおけるab37355の使用に適用されます**
アプリケーションノートには、推奨の開始希釈率がありますが、適切な希釈率につきましてはご検討ください。

アプリケーション	Abreviews	特記事項
ELISA		Use at an assay dependent concentration.

アプリケーション	Abreviews	特記事項
Flow Cyt		Use at an assay dependent concentration. ab37355 - Mouse polyclonal IgG, is suitable for use as an isotype control with this antibody.
IHC		Use at an assay dependent concentration.

画像



ELISA plate was coated with serially diluted Mouse IgG-UNLB (ab37355). Immunoglobulin was detected with Goat Anti-Mouse IgG, Human ads-BIOT, Goat Anti-Mouse IgA-BIOT, and Goat Anti-Mouse IgM, Human ads-BIOT followed by Streptavidin-HRP and quantified.

Please note: All products are "FOR RESEARCH USE ONLY. NOT FOR USE IN DIAGNOSTIC PROCEDURES"

Our Abpromise to you: Quality guaranteed and expert technical support

- Replacement or refund for products not performing as stated on the datasheet
- Valid for 12 months from date of delivery
- Response to your inquiry within 24 hours
- We provide support in Chinese, English, French, German, Japanese and Spanish
- Extensive multi-media technical resources to help you
- We investigate all quality concerns to ensure our products perform to the highest standards

If the product does not perform as described on this datasheet, we will offer a refund or replacement. For full details of the Abpromise, please visit <https://www.abcam.co.jp/abpromise> or contact our technical team.

Terms and conditions

- Guarantee only valid for products bought direct from Abcam or one of our authorized distributors