


Anti-Moesin antibody [EPR2428(2)] ab151542

KO 評価済 リコンビナント RabMAb

★★★★★ [2 Abreviews](#) [4 References](#) [画像数 9](#)

製品の概要

製品名	Anti-Moesin antibody [EPR2428(2)]
製品の詳細	Rabbit monoclonal [EPR2428(2)] to Moesin
由来種	Rabbit
アプリケーション	適用あり: WB, IHC-P, ICC/IF, IP 適用なし: Flow Cyt
種交差性	交差種: Human 交差が予測される動物種: Mouse, Rat 
免疫原	Synthetic peptide within Human Moesin aa 400-500. The exact sequence is proprietary.
ポジティブ・コントロール	Raji, Jurkat and HeLa whole cell lysate (ab150035); Human breast carcinoma tissue; Raji cells.
特記事項	This product is a recombinant monoclonal antibody, which offers several advantages including: <ul style="list-style-type: none">- High batch-to-batch consistency and reproducibility- Improved sensitivity and specificity- Long-term security of supply- Animal-free production For more information see here . Our RabMAb [®] technology is a patented hybridoma-based technology for making rabbit monoclonal antibodies. For details on our patents, please refer to RabMAb[®] patents .

製品の特性

製品の状態	Liquid
保存方法	Shipped at 4°C. Store at -20°C.
バッファー	pH: 7.2 Preservative: 0.01% Sodium azide Constituents: 9% PBS, 40% Glycerol (glycerin, glycerine), 0.05% BSA, 50% Tissue culture supernatant
精製度	Protein A purified
ポリ/モノ	モノクローナル
クローン名	EPR2428(2)

アプリケーション

The Abpromise guarantee **Abpromise保証は、次のテスト済みアプリケーションにおけるab151542の使用に適用されず**
アプリケーションノートには、推奨の開始希釈率がありますが、適切な希釈率につきましてはご確認ください。

アプリケーション	Abreviews	特記事項
WB	★★★★★ (1)	1/1000 - 1/10000. Predicted molecular weight: 68 kDa.
IHC-P	★★★★★ (1)	1/100 - 1/250. Perform heat mediated antigen retrieval with citrate buffer pH 6 before commencing with IHC staining protocol.
ICC/IF		1/100 - 1/250.
IP		Use at an assay dependent concentration.

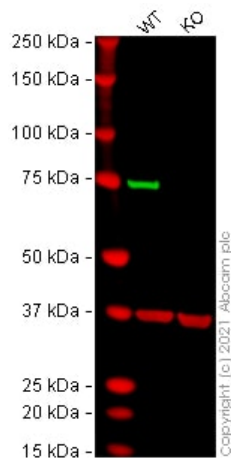
追加情報

Is unsuitable for Flow Cyt.

ターゲット情報

機能	Probably involved in connections of major cytoskeletal structures to the plasma membrane.
組織特異性	In all tissues and cultured cells studied.
配列類似性	Contains 1 FERM domain.
翻訳後修飾	Phosphorylation on Thr-558 is crucial for the formation of microvilli-like structures.
細胞内局在	Cell membrane. Cytoplasm > cytoskeleton. Apical cell membrane. Cell projection > microvillus membrane. Phosphorylated form is enriched in microvilli-like structures at apical membrane (By similarity). Increased cell membrane localization of both phosphorylated and non-phosphorylated forms seen after thrombin treatment.

画像



Western blot - Anti-Moesin antibody [EPR2428(2)] (ab151542)

All lanes : Anti-Moesin antibody [EPR2428(2)] (ab151542) at 2 $\mu\text{g/ml}$

Lane 1 : Wild-type HeLa cell lysate

Lane 2 : MSN knockout HeLa cell lysate

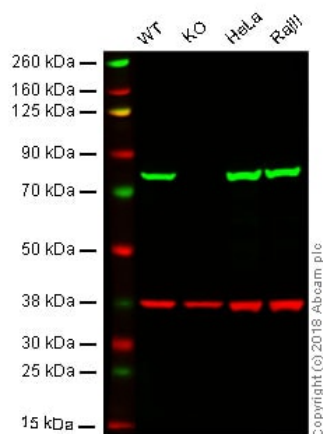
Lysates/proteins at 20 μg per lane.

Performed under reducing conditions.

Predicted band size: 68 kDa

Observed band size: 75 kDa

False colour image of Western blot: Anti-Moesin antibody [EPR2428(2)] staining at 2 $\mu\text{g/ml}$, shown in green; Mouse anti-GAPDH antibody [6C5] ([ab8245](#)) loading control staining at 1/20000 dilution, shown in red. In Western blot, ab151542 was shown to bind specifically to Moesin. A band was observed at 75 kDa in wild-type HeLa cell lysates with no signal observed at this size in MSN knockout cell line [ab265020](#) (knockout cell lysate [ab257542](#)). To generate this image, wild-type and MSN knockout HeLa cell lysates were analysed. First, samples were run on an SDS-PAGE gel then transferred onto a nitrocellulose membrane. Membranes were blocked in 3 % milk in TBS-0.1 % Tween[®] 20 (TBS-T) before incubation with primary antibodies overnight at 4 °C. Blots were washed four times in TBS-T, incubated with secondary antibodies for 1 h at room temperature, washed again four times then imaged. Secondary antibodies used were Goat anti-Rabbit IgG H&L (IRDye[®] 800CW) preabsorbed ([ab216773](#)) and Goat anti-Mouse IgG H&L (IRDye[®] 680RD) preabsorbed ([ab216776](#)) at 1/20000 dilution.



Western blot - Anti-Moesin antibody [EPR2428(2)] (ab151542)

Lane 1: Wild-type HAP1 whole cell lysate (20 µg)

Lane 2: Moesin knockout HAP1 whole cell lysate (20 µg)

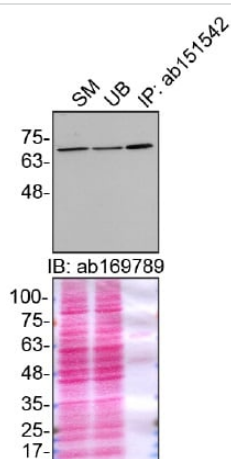
Lane 3: HeLa whole cell lysate (20 µg)

Lane 4: Raji whole cell lysate (20 µg)

Lanes 1 - 4: Merged signal (red and green). Green - ab151542 observed at 75 kDa. Red - loading control, **ab9484**, observed at 37 kDa.

ab151542 was shown to specifically react with Moesin in wild-type HAP1 cells as signal was lost in Moesin knockout cells. Wild-type and Moesin knockout samples were subjected to SDS-PAGE.

Ab151542 and **ab9484** (Mouse anti-GAPDH loading control) were incubated overnight at 4°C at 1/1000 dilution and 1/20000 dilution respectively. Blots were developed with Goat anti-Rabbit IgG H&L (IRDye® 800CW) preabsorbed **ab216773** and Goat anti-Mouse IgG H&L (IRDye® 680RD) preabsorbed **ab216776** secondary antibodies at 1/20000 dilution for 1 hour at room temperature before imaging.



Immunoprecipitation - Anti-Moesin antibody [EPR2428(2)] (ab151542)

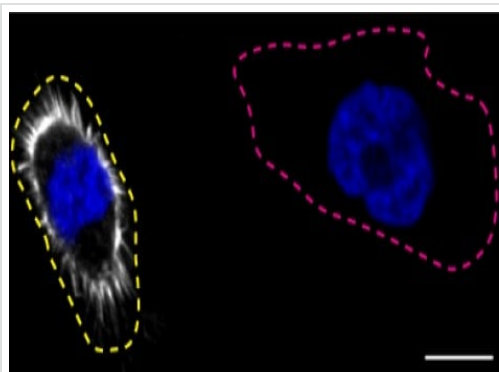
Immunoprecipitation of MSN in HeLa cells. Lysates were prepared and immunoprecipitation was performed using 1.0 µg of ab151542 pre-coupled to prot.A-Sepharose beads. Samples were washed and processed for western blot with **ab169789** at 1/10000.

SM=10% starting material; UB=10% unbound fraction;

IP=immunoprecipitate. These data were provided by YCharOS Inc.,

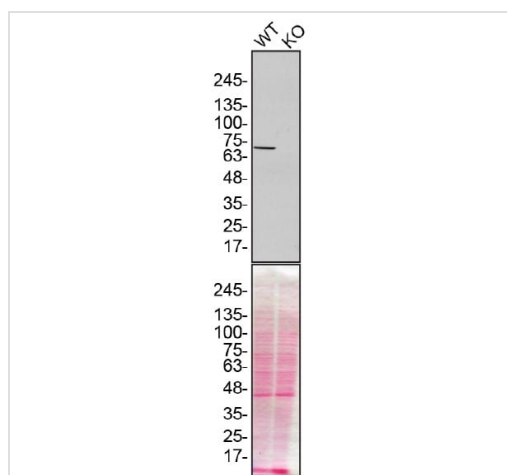
an open science company with the mission of characterizing commercially available antibody reagents for all human proteins.

Abcam and YCharOS are working together to help address the reproducibility crisis by enabling the life science community to better evaluate commercially available antibodies.



Immunocytochemistry/ Immunofluorescence - Anti-Moesin antibody [EPR2428(2)] (ab151542)

ab151542 was shown to react with MSN in wild-type HeLa cells in Immunocytochemistry with loss of signal observed in MSN knockout cell line **ab265020**. Wild-type and knockout cells were mixed and pelleted at a 1:1 ratio on coverslips. The cells were fixed with 4% paraformaldehyde (15 min) then permeabilized with 0.1% Triton X-100 (10min) and then blocked with 1/10000. The cells were then incubated with ab151542 at 1/200 dilution overnight at 4°C followed by a further incubation at room temperature for 1h with a goat anti-rabbit secondary antibody to (Alexa Fluor® 555) at 0.5 µg/ml. Acquisition of the green (wild-type), red (antibody staining) and far-red (knockout) channels was performed. Representative grayscale images of the red channel are shown. Wild-type and knockout cells are outlined with yellow and magenta dashed line, respectively. Schematic representation of the mosaic strategy used is shown on the bottom-right panel. Image was acquired with a Zeiss(LSM-880). These data were provided by YCharOS Inc., an open science company with the mission of characterizing commercially available antibody reagents for all human proteins. Abcam and YCharOS are working together to help address the reproducibility crisis by enabling the life science community to better evaluate commercially available antibodies.



Western blot - Anti-Moesin antibody [EPR2428(2)] (ab151542)

All lanes : Anti-Moesin antibody [EPR2428(2)] (ab151542) at 1/1000 dilution

Lane 1 : Wild-type HeLa cell lysate

Lane 2 : MSN knockout HeLa cell lysate

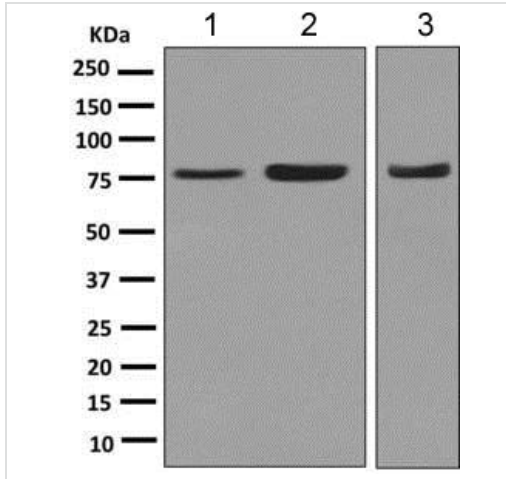
Lysates/proteins at 20 µg per lane.

Performed under reducing conditions.

Predicted band size: 68 kDa

ab151542 was shown to react with MSN in wild-type HeLa cells in Western blot with loss of signal observed in MSN knockout cell line **ab265020** (MSN knockout cell lysate **ab257542**). Wild-type HeLa and MSN knockout cell lysates were subjected to SDS-PAGE. Membranes were blocked in 5% milk in TBST for 1 hr before incubation with ab151542 overnight at 4 °C at a 1/1000 dilution. Blots were incubated with goat anti-rabbit HRP secondary antibodies at 0.2ug/mL before imaging. These data were provided

by YCharOS Inc., an open science company with the mission of characterizing commercially available antibody reagents for all human proteins. Abcam and YCharOS are working together to help address the reproducibility crisis by enabling the life science community to better evaluate commercially available antibodies.



Western blot - Anti-Moesin antibody [EPR2428(2)] (ab151542)

All lanes : Anti-Moesin antibody [EPR2428(2)] (ab151542) at 1/1000 dilution

Lane 1 : Raji cell lysate

Lane 2 : Jurkat cell lysate

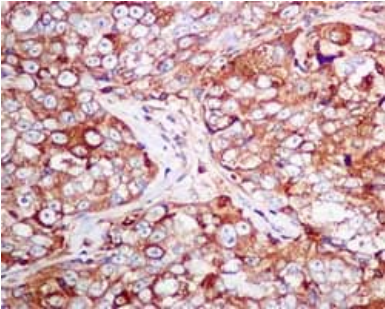
Lane 3 : HeLa cell lysate

Lysates/proteins at 10 µg per lane.

Secondary

All lanes : Goat anti-rabbit HRP at 1/2000 dilution

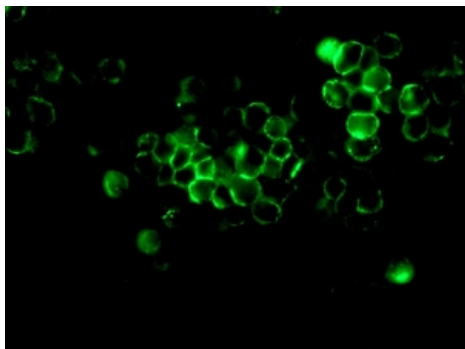
Predicted band size: 68 kDa



Immunohistochemistry (Formalin/PFA-fixed paraffin-embedded sections) - Anti-Moesin antibody [EPR2428(2)] (ab151542)

Immunohistochemical analysis of paraffin-embedded Human breast carcinoma tissue labeling Moesin with ab151542 at 1/100 dilution.

Perform heat mediated antigen retrieval with citrate buffer pH 6 before commencing with IHC staining protocol.



Immunofluorescent analysis of Raji cells labeling Moesin with ab151542 at 1/100 dilution.

Immunocytochemistry/ Immunofluorescence - Anti-Moesin antibody [EPR2428(2)] (ab151542)

Why choose a recombinant antibody?



Research with confidence
Consistent and reproducible results



Long-term and scalable supply
Recombinant technology



Success from the first experiment
Confirmed specificity



Ethical standards compliant
Animal-free production

Anti-Moesin antibody [EPR2428(2)] (ab151542)

Please note: All products are "FOR RESEARCH USE ONLY. NOT FOR USE IN DIAGNOSTIC PROCEDURES"

Our Abpromise to you: Quality guaranteed and expert technical support

- Replacement or refund for products not performing as stated on the datasheet
- Valid for 12 months from date of delivery
- Response to your inquiry within 24 hours
- We provide support in Chinese, English, French, German, Japanese and Spanish
- Extensive multi-media technical resources to help you
- We investigate all quality concerns to ensure our products perform to the highest standards

If the product does not perform as described on this datasheet, we will offer a refund or replacement. For full details of the Abpromise, please visit <https://www.abcam.co.jp/abpromise> or contact our technical team.

Terms and conditions

- Guarantee only valid for products bought direct from Abcam or one of our authorized distributors