


Anti-MMS21 antibody ab64683

画像数 1

製品の概要

製品名	Anti-MMS21 antibody
製品の詳細	Rabbit polyclonal to MMS21
由来種	Rabbit
アプリケーション	適用あり: WB
種交差性	交差種: Human 交差が予測される動物種: Mouse, Rat, Cow 
免疫原	Synthetic peptide corresponding to Human MMS21 aa 50-150 conjugated to keyhole limpet haemocyanin. (Peptide available as ab94387)
ポジティブ・コントロール	This antibody gave a positive signal in the following human whole cell lysates: Caco2; HepG2; A431.
特記事項	<p>The Life Science industry has been in the grips of a reproducibility crisis for a number of years. Abcam is leading the way in addressing this with our range of recombinant monoclonal antibodies and knockout edited cell lines for gold-standard validation. Please check that this product meets your needs before purchasing.</p> <p>If you have any questions, special requirements or concerns, please send us an inquiry and/or contact our Support team ahead of purchase. Recommended alternatives for this product can be found below, along with publications, customer reviews and Q&As</p>

製品の特性

製品の状態	Liquid
保存方法	Shipped at 4°C. Store at +4°C short term (1-2 weeks). Upon delivery aliquot. Store at -20°C or -80°C. Avoid freeze / thaw cycle.
バッファー	pH: 7.40 Preservative: 0.02% Sodium azide Constituent: PBS
	Batches of this product that have a concentration < 1mg/ml may have BSA added as a stabilising agent. If you would like information about the formulation of a specific lot, please contact our scientific support team who will be happy to help.

精製度	Immunogen affinity purified
ポリ/モノ	ポリクローナル
アイソタイプ	IgG

アプリケーション

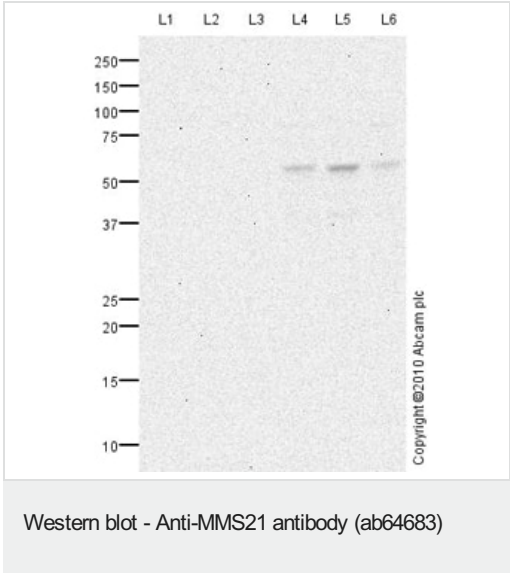
The Abpromise guarantee **Abpromise保証は、次のテスト済みアプリケーションにおけるab64683の使用に適用されます**
アプリケーションノートには、推奨の開始希釈率がありますが、適切な希釈率につきましてはご確認ください。

アプリケーション	Abreviews	特記事項
WB		Use a concentration of 1 µg/ml. Detects a band of approximately 52 kDa (predicted molecular weight: 28 kDa).

ターゲット情報

機能	E3 SUMO-protein ligase component of the SMC5-SMC6 complex, a complex involved in DNA double-strand breaks by homologous recombination. The complex may promote sister chromatid homologous recombination by recruiting the SMC1-SMC3 cohesin complex to double-strand breaks. Acts as a E3 ligase mediating SUMO attachment to various proteins such as SMC6L1 and TRAX, and maybe the cohesin components RAD21 and STAG2. SUMO protein-ligase activity is required for the prevention of DNA damage-induced apoptosis by facilitating DNA repair.
パスウェイ	Protein modification; protein sumoylation.
配列類似性	Belongs to the NSE2 family. Contains 1 SP-RING-type zinc finger.
翻訳後修飾	Sumoylated, possibly via autosumoylation.
細胞内局在	Nucleus.

画像



All lanes : Anti-MMS21 antibody (ab64683) at 1 µg/ml

Lane 1 : Caco 2 (Human colonic carcinoma cell line) Whole Cell Lysate with Immunizing peptide at 1 µg/ml

Lane 2 : HepG2 (Human hepatocellular liver carcinoma cell line) Whole Cell Lysate with Immunizing peptide at 1 µg/ml

Lane 3 : A431 (Human epithelial carcinoma cell line) Whole Cell Lysate with Immunizing peptide at 1 µg/ml

Lane 4 : Caco 2 (Human colonic carcinoma cell line) Whole Cell Lysate

Lane 5 : HepG2 (Human hepatocellular liver carcinoma cell line) Whole Cell Lysate

Lane 6 : A431 (Human epithelial carcinoma cell line) Whole Cell

Lysate

Lysates/proteins at 10 µg per lane.

Secondary

All lanes : Goat polyclonal to Rabbit IgG - H&L - Pre-Adsorbed (HRP) at 1/3000 dilution

Developed using the ECL technique.

Performed under reducing conditions.

Predicted band size: 28 kDa

Observed band size: 56 kDa

Exposure time: 20 minutes

Human E3 SUMO-protein ligase MMS21 contains a potential sumoylation site (SwissProt) which may explain its migration at a higher molecular weight than predicted.

Please note: All products are "FOR RESEARCH USE ONLY. NOT FOR USE IN DIAGNOSTIC PROCEDURES"

Our Abpromise to you: Quality guaranteed and expert technical support

- Replacement or refund for products not performing as stated on the datasheet
- Valid for 12 months from date of delivery
- Response to your inquiry within 24 hours
- We provide support in Chinese, English, French, German, Japanese and Spanish
- Extensive multi-media technical resources to help you
- We investigate all quality concerns to ensure our products perform to the highest standards

If the product does not perform as described on this datasheet, we will offer a refund or replacement. For full details of the Abpromise, please visit <https://www.abcam.co.jp/abpromise> or contact our technical team.

Terms and conditions

- Guarantee only valid for products bought direct from Abcam or one of our authorized distributors