

### Anti-MMP14 antibody - Hinge region ab38971

★★★★★ [5 Abreviews](#) [39 References](#) [画像数 3](#)

#### 製品の概要

製品名	Anti-MMP14 antibody - Hinge region
製品の詳細	Rabbit polyclonal to MMP14 - Hinge region
由来種	Rabbit
特異性	This antibody binds to MMP14, but does not cross react with the other MMP family members (MMP1, MMP2, MMP3, MMP9).
アプリケーション	<b>適用あり:</b> WB
種交差性	<b>交差種:</b> Human
免疫原	Synthetic peptide corresponding to Human MMP14. (Peptide available as <a href="#">ab41091</a> )
特記事項	<p>The Life Science industry has been in the grips of a reproducibility crisis for a number of years. Abcam is leading the way in addressing this with our range of recombinant monoclonal antibodies and knockout edited cell lines for gold-standard validation. Please check that this product meets your needs before purchasing.</p> <p>If you have any questions, special requirements or concerns, please send us an inquiry and/or contact our Support team ahead of purchase. Recommended alternatives for this product can be found below, along with publications, customer reviews and Q&amp;As</p>

#### 製品の特性

製品の状態	Liquid
保存方法	Shipped at 4°C. Store at +4°C short term (1-2 weeks). Upon delivery aliquot. Store at -20°C long term. Avoid freeze / thaw cycle.
バッファー	Preservative: 0.05% Sodium azide Constituent: 50% Glycerol
精製度	Immunogen affinity purified
ポリ/モノ	ポリクローナル
アイソタイプ	IgG

#### アプリケーション

## The Abpromise guarantee

**Abpromise保証は、次のテスト済みアプリケーションにおけるab38971の使用に適用されます**

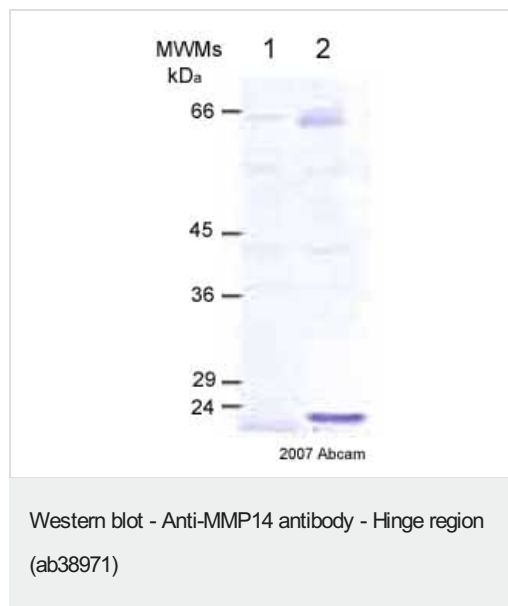
アプリケーションノートには、推奨の開始希釈率がありますが、適切な希釈率につきましてはご検討ください。

アプリケーション	Abreviews	特記事項
WB	★★★★★ (3)	1/2000 - 1/5000. Predicted molecular weight: 66 kDa. When used against the reduced protein this antibody identifies bands at 65 Kd and 63 Kd (the pro-form and active form) as well as activation/breakdown products.

## ターゲット情報

機能	Seems to specifically activate progelatinase A. May thus trigger invasion by tumor cells by activating progelatinase A on the tumor cell surface. May be involved in actin cytoskeleton reorganization by cleaving PTK7.
組織特異性	Expressed in stromal cells of colon, breast, and head and neck. Expressed in lung tumors.
配列類似性	Belongs to the peptidase M10A family. Contains 4 hemopexin-like domains.
ドメイン	The conserved cysteine present in the cysteine-switch motif binds the catalytic zinc ion, thus inhibiting the enzyme. The dissociation of the cysteine from the zinc ion upon the activation-peptide release activates the enzyme.
翻訳後修飾	The precursor is cleaved by a furin endopeptidase.
細胞内局在	Membrane. Melanosome. Identified by mass spectrometry in melanosome fractions from stage I to stage IV.

## 画像



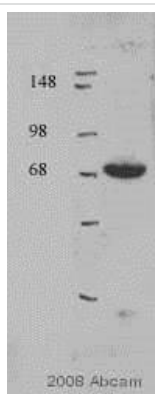
**All lanes :** Anti-MMP14 antibody - Hinge region (ab38971)

**Lane 1 :** Cell lysates from human dermal fibroblasts *neonatal* (no treatment)

**Lane 2 :** Cell lysates from human dermal fibroblasts *neonatal* (treated with Il1beta)

**Predicted band size:** 66 kDa

**Observed band size:** 66 kDa



Western blot - Anti-MMP14 antibody - Hinge region (ab38971)

This image is courtesy of an anonymous Abreview

Anti-MMP14 antibody - Hinge region (ab38971) at 1/1000 dilution + HT1080 whole cell lysate at 30 µg

### Secondary

HRP-conjugated donkey anti-rabbit

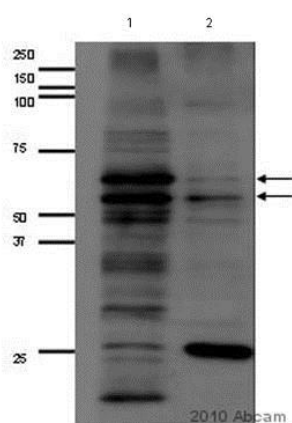
Developed using the ECL technique.

Performed under reducing conditions.

**Predicted band size:** 66 kDa

**Observed band size:** 64 kDa

**Exposure time:** 1 minute



Western blot - Anti-MMP14 antibody - Hinge region (ab38971)

This image is a courtesy of an anonymous Abreview

**All lanes :** Anti-MMP14 antibody - Hinge region (ab38971) at 1/5000 dilution

**Lane 1 :** Whole cell lysate prepared from HT1080 cells

**Lane 2 :** Whole cell lysate prepared from human vascular smooth muscle cells

Lysates/proteins at 5 µg per lane.

### Secondary

**All lanes :** HRP conjugated donkey anti-rabbit IgG at 1/2000 dilution

Developed using the ECL technique.

Performed under reducing conditions.

**Predicted band size:** 66 kDa

**Observed band size:** 63,65 kDa

**Additional bands at:** 20 kDa (possible non-specific binding)

**Exposure time:** 30 seconds

Blocked using 5% milk for 1 hour at 20°C.

**Please note:** All products are "FOR RESEARCH USE ONLY. NOT FOR USE IN DIAGNOSTIC PROCEDURES"

### **Our Abpromise to you: Quality guaranteed and expert technical support**

---

- Replacement or refund for products not performing as stated on the datasheet
- Valid for 12 months from date of delivery
- Response to your inquiry within 24 hours
  
- We provide support in Chinese, English, French, German, Japanese and Spanish
- Extensive multi-media technical resources to help you
- We investigate all quality concerns to ensure our products perform to the highest standards

If the product does not perform as described on this datasheet, we will offer a refund or replacement. For full details of the Abpromise, please visit <https://www.abcam.co.jp/abpromise> or contact our technical team.

### **Terms and conditions**

---

- Guarantee only valid for products bought direct from Abcam or one of our authorized distributors