


# Anti-MMP11 antibody ab119284

**4 References**   [画像数 4](#)

### 製品の概要

製品名	Anti-MMP11 antibody
製品の詳細	Rabbit polyclonal to MMP11
由来種	Rabbit
アプリケーション	<b>適用あり:</b> WB, IHC-P, ICC/IF
種交差性	<b>交差種:</b> Human <b>交差が予測される動物種:</b> Mouse, Rat 
免疫原	Synthetic peptide conjugated to KLH, derived from internal sequence amino acids of Human MMP11.
ポジティブ・コントロール	Human placenta and spleen tissues; A549 cell lysate; A549 cells.
特記事項	<p>The Life Science industry has been in the grips of a reproducibility crisis for a number of years. Abcam is leading the way in addressing this with our range of recombinant monoclonal antibodies and knockout edited cell lines for gold-standard validation. Please check that this product meets your needs before purchasing.</p> <p>If you have any questions, special requirements or concerns, please send us an inquiry and/or contact our Support team ahead of purchase. Recommended alternatives for this product can be found below, along with publications, customer reviews and Q&amp;As</p>

### 製品の特性

製品の状態	Liquid
保存方法	Shipped at 4°C. Upon delivery aliquot and store at -20°C. Avoid freeze / thaw cycles.
バッファー	<p>pH: 7.40</p> <p>Preservative: 0.02% Sodium azide</p> <p>Constituents: 49% PBS, 50% Glycerol (glycerin, glycerine), 0.88% Sodium chloride</p>
精製度	PBS without Mg2+, Ca2+
ポリ/モノ	Protein A purified
アイソタイプ	ポリクローナル
	IgG

## アプリケーション

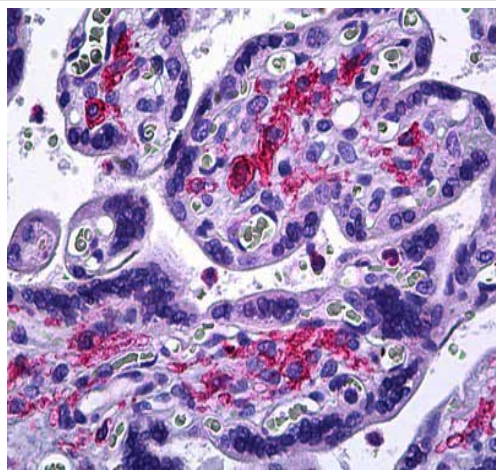
**The Abpromise guarantee**      **Abpromise保証は、** 次のテスト済みアプリケーションにおけるab119284の使用に適用されます  
アプリケーションノートには、推奨の開始希釈率がありますが、適切な希釈率につきましてはご検討ください。

アプリケーション	Abreviews	特記事項
WB		1/500 - 1/1000. Predicted molecular weight: 55 kDa.
IHC-P		Use a concentration of 10 µg/ml.
ICC/IF		1/100 - 1/500.

## ターゲット情報

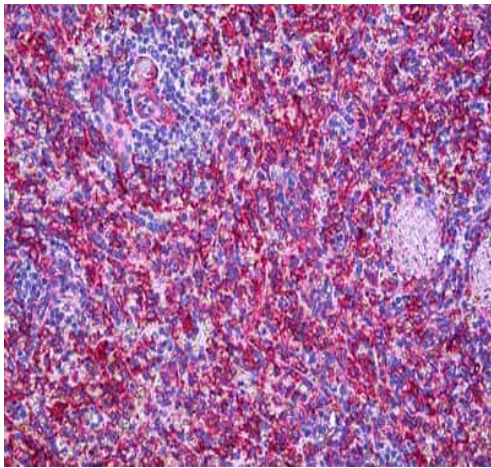
機能	May play an important role in the progression of epithelial malignancies.
組織特異性	Specifically expressed in stromal cells of breast carcinomas.
配列類似性	Belongs to the peptidase M10A family. Contains 4 hemopexin-like domains.
ドメイン	The conserved cysteine present in the cysteine-switch motif binds the catalytic zinc ion, thus inhibiting the enzyme. The dissociation of the cysteine from the zinc ion upon the activation-peptide release activates the enzyme.
翻訳後修飾	The precursor is cleaved by a furin endopeptidase.
細胞内局在	Secreted > extracellular space > extracellular matrix.

## 画像



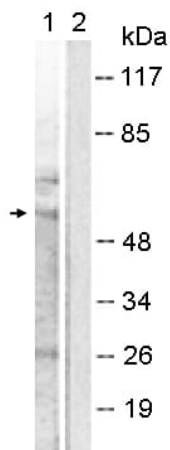
ab119284, at 10 µg/ml, staining MMP11 in Formalin-fixed, Paraffin-embedded Human placenta tissue by Immunohistochemistry.

Immunohistochemistry (Formalin/PFA-fixed paraffin-embedded sections) - Anti-MMP11 antibody (ab119284)



Immunohistochemistry (Formalin/PFA-fixed paraffin-embedded sections) - Anti-MMP11 antibody (ab119284)

ab119284, at 10 µg/ml, staining MMP11 in Formalin-fixed, Paraffin-embedded Human spleen tissue by Immunohistochemistry.



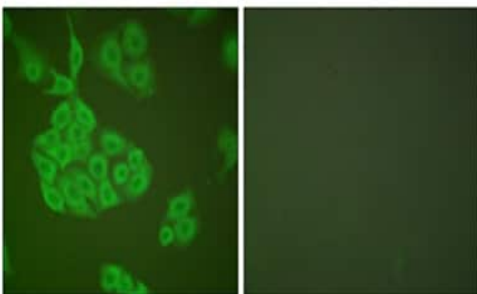
Western blot - Anti-MMP11 antibody (ab119284)

**All lanes :** Anti-MMP11 antibody (ab119284) at 1/500 dilution

**Lane 1 :** A549 cell lysate

**Lane 2 :** A549 cell lysate with synthesized peptide

**Predicted band size:** 55 kDa



Immunocytochemistry/ Immunofluorescence - Anti-MMP11 antibody (ab119284)

ab119284, at 1/100, staining MMP11 in A549 cells by Immunofluorescence. The image on the right shows cells treated with synthesised peptide.

### **Our Abpromise to you: Quality guaranteed and expert technical support**

---

- Replacement or refund for products not performing as stated on the datasheet
- Valid for 12 months from date of delivery
- Response to your inquiry within 24 hours
  
- We provide support in Chinese, English, French, German, Japanese and Spanish
- Extensive multi-media technical resources to help you
- We investigate all quality concerns to ensure our products perform to the highest standards

If the product does not perform as described on this datasheet, we will offer a refund or replacement. For full details of the Abpromise, please visit <https://www.abcam.co.jp/abpromise> or contact our technical team.

### **Terms and conditions**

---

- Guarantee only valid for products bought direct from Abcam or one of our authorized distributors