

Anti-MMP1 antibody [EP1249Y] ab134184

リコンビナント **RabMAb**

15 References **画像数 4**

製品の概要

製品名	Anti-MMP1 antibody [EP1249Y]
製品の詳細	Rabbit monoclonal [EP1249Y] to MMP1
由来種	Rabbit
アプリケーション	適用あり: WB, IP 適用なし: Flow Cyt, ICC/IF or IHC-P
種交差性	交差種: Human
免疫原	Synthetic peptide within Human MMP1 aa 1-100 (N terminal). The exact sequence is proprietary. The immunogen amino acid sequence is within the propeptide sequence.
ポジティブ・コントロール	WB: A431 cell lysate. IP: MDA-MB-231.
特記事項	<p>This product is a recombinant monoclonal antibody, which offers several advantages including:</p> <ul style="list-style-type: none"> - High batch-to-batch consistency and reproducibility - Improved sensitivity and specificity - Long-term security of supply - Animal-free production <p>For more information see here.</p> <p>Our RabMAb[®] technology is a patented hybridoma-based technology for making rabbit monoclonal antibodies. For details on our patents, please refer to RabMAb[®] patents.</p> <p>Mouse, Rat: We have preliminary internal testing data to indicate this antibody may not react with these species. Please contact us for more information.</p>

製品の特性

製品の状態	Liquid
保存方法	Shipped at 4°C. Store at -20°C. Stable for 12 months at -20°C.
バッファー	pH: 7.2 Preservative: 0.05% Sodium azide Constituents: 0.1% BSA, 40% Glycerol (glycerin, glycerine), 9.85% Tris glycine, 50% Tissue culture supernatant
精製度	Protein A purified

ポリ/モノ	モノクローナル
クローン名	EP1249Y
アイソタイプ	IgG

アプリケーション

The Abpromise guarantee **Abpromise保証は、**次のテスト済みアプリケーションにおけるab134184の使用に適用されます
アプリケーションノートには、推奨の開始希釈率がありますが、適切な希釈率につきましてはご検討ください。

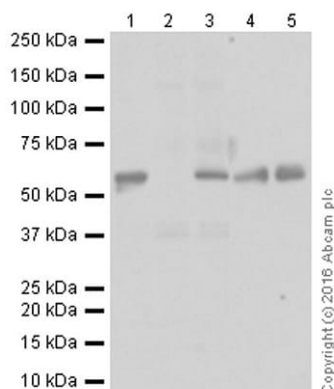
アプリケーション	Abreviews	特記事項
WB		1/1000. Predicted molecular weight: 54 kDa.
IP		1/20.

追加情報 Is unsuitable for Flow Cyt, ICC/IF or IHC-P.

ターゲット情報

機能	Cleaves collagens of types I, II, and III at one site in the helical domain. Also cleaves collagens of types VII and X. In case of HIV infection, interacts and cleaves the secreted viral Tat protein, leading to a decrease in neuronal Tat's mediated neurotoxicity.
配列類似性	Belongs to the peptidase M10A family. Contains 4 hemopexin-like domains.
ドメイン	There are two distinct domains in this protein; the catalytic N-terminal, and the C-terminal which is involved in substrate specificity and in binding TIMP (tissue inhibitor of metalloproteinases). The conserved cysteine present in the cysteine-switch motif binds the catalytic zinc ion, thus inhibiting the enzyme. The dissociation of the cysteine from the zinc ion upon the activation-peptide release activates the enzyme.
翻訳後修飾	Undergoes autolytic cleavage to two major forms (22 kDa and 27 kDa). A minor form (25 kDa) is the glycosylated form of the 22 kDa form. The 27 kDa form has no activity while the 22/25 kDa form can act as activator for collagenase.
細胞内局在	Secreted > extracellular space > extracellular matrix.

画像



Western blot - Anti-MMP1 antibody [EP1249Y]
(ab134184)

All lanes : Anti-MMP1 antibody [EP1249Y] (ab134184) at 1/500 dilution

Lane 1 : MDA-MB-231 (human breast adenocarcinoma epithelial) whole cell lysate

Lane 2 : Lysate from HeLa cells untreated with TPA

Lane 3 : HeLa treated with 100 ng/mL TPA for 10 hours cell lysate

Lane 4 : Human colon cancer tissue lysate

Lane 5 : Human breast cancer tissue lysate

Lysates/proteins at 10 µg per lane.

Secondary

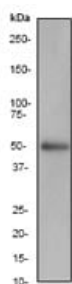
All lanes : Goat Anti-Rabbit IgG H&L (HRP) at 1/1000 dilution

Predicted band size: 54 kDa

Observed band size: 54 kDa

Exposure time: 30 seconds

Blocking and dilution buffer: 5% NFDM/TBST



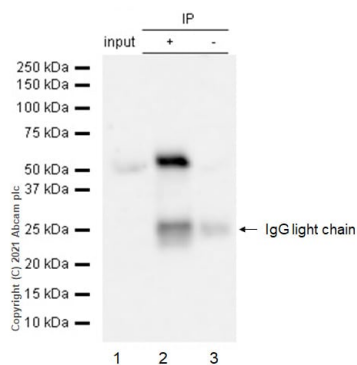
Western blot - Anti-MMP1 antibody [EP1249Y]
(ab134184)

Anti-MMP1 antibody [EP1249Y] (ab134184) at 1/1000 dilution + A431 cell lysate at 10 µg

Secondary

HRP labelled goat anti-rabbit at 1/2000 dilution

Predicted band size: 54 kDa



Immunoprecipitation - Anti-MMP1 antibody
[EP1249Y] (ab134184)

MMP1 was immunoprecipitated from 0.35 mg MDA-MB-231 (Human breast adenocarcinoma epithelial cell) whole cell lysate 10 µg with 134184 at 1/50 dilution (2µg). VeriBlot for IP Detection Reagent (HRP)(**ab131366**) was used at 1/5000 dilution.

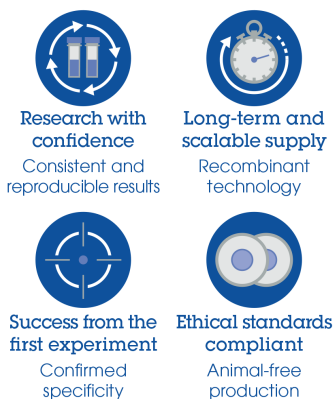
Lane 1: MDA-MB-231 (Human breast adenocarcinoma epithelial cell) whole cell lysate 10 µg

Lane 2: ab134184 IP in MDA-MB-231 whole cell lysate

Lane 3: Rabbit monoclonal IgG (**ab172730**) instead of ab134184 in MDA-MB-231 whole cell lysate

Blocking and dilution buffer and concentration: 5% NFDM/TBST.

Why choose a recombinant antibody?



Anti-MMP1 antibody [EP1249Y] (ab134184)

Please note: All products are "FOR RESEARCH USE ONLY. NOT FOR USE IN DIAGNOSTIC PROCEDURES"

Our Abpromise to you: Quality guaranteed and expert technical support

- Replacement or refund for products not performing as stated on the datasheet
- Valid for 12 months from date of delivery
- Response to your inquiry within 24 hours
- We provide support in Chinese, English, French, German, Japanese and Spanish
- Extensive multi-media technical resources to help you
- We investigate all quality concerns to ensure our products perform to the highest standards

If the product does not perform as described on this datasheet, we will offer a refund or replacement. For full details of the Abpromise, please visit <https://www.abcam.co.jp/abpromise> or contact our technical team.

Terms and conditions

- Guarantee only valid for products bought direct from Abcam or one of our authorized distributors