

Anti-MMP1 antibody ab38929

★★★★☆ [6 Abreviews](#) [53 References](#) [画像数 1](#)

製品の概要

製品名	Anti-MMP1 antibody
製品の詳細	Rabbit polyclonal to MMP1
由来種	Rabbit
特異性	This antibody binds to MMP1, but does not cross react with the other MMP family members (MMP2, MMP3, MMP9).
アプリケーション	適用あり: WB
種交差性	交差種: Human
免疫原	Synthetic peptide corresponding to MMP1. based on the hemopexin domain of the human sequence (Peptide available as ab41003)
特記事項	<p>The Life Science industry has been in the grips of a reproducibility crisis for a number of years. Abcam is leading the way in addressing this with our range of recombinant monoclonal antibodies and knockout edited cell lines for gold-standard validation. Please check that this product meets your needs before purchasing.</p> <p>If you have any questions, special requirements or concerns, please send us an inquiry and/or contact our Support team ahead of purchase. Recommended alternatives for this product can be found below, along with publications, customer reviews and Q&As</p>

製品の特性

製品の状態	Liquid
保存方法	Shipped at 4°C. Store at +4°C short term (1-2 weeks). Upon delivery aliquot. Store at -20°C long term. Avoid freeze / thaw cycle.
バッファー	Preservative: 0.05% Sodium azide Constituent: 50% Glycerol
精製度	Immunogen affinity purified
ポリ/モノ	ポリクローナル
アイソタイプ	IgG

アプリケーション

The Abpromise guarantee

Abpromise保証は、次のテスト済みアプリケーションにおけるab38929の使用に適用されず

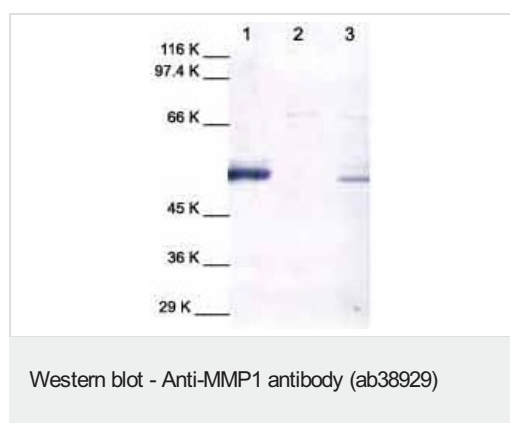
アプリケーションノートには、推奨の開始希釈率がありますが、適切な希釈率につきましてはご検討ください。

アプリケーション	Abreviews	特記事項
WB	★★★★☆ (3)	1/5000. Predicted molecular weight: 54 kDa. When used against the reduced protein this antibody identifies bands at 53 Kd and 51 Kd (the pro-form), as well as the initial active forms. Dilution optimised using Chromogenic detection.

ターゲット情報

機能	Cleaves collagens of types I, II, and III at one site in the helical domain. Also cleaves collagens of types VII and X. In case of HIV infection, interacts and cleaves the secreted viral Tat protein, leading to a decrease in neuronal Tat's mediated neurotoxicity.
配列類似性	Belongs to the peptidase M10A family. Contains 4 hemopexin-like domains.
ドメイン	There are two distinct domains in this protein; the catalytic N-terminal, and the C-terminal which is involved in substrate specificity and in binding TIMP (tissue inhibitor of metalloproteinases). The conserved cysteine present in the cysteine-switch motif binds the catalytic zinc ion, thus inhibiting the enzyme. The dissociation of the cysteine from the zinc ion upon the activation-peptide release activates the enzyme.
翻訳後修飾	Undergoes autolytic cleavage to two major forms (22 kDa and 27 kDa). A minor form (25 kDa) is the glycosylated form of the 22 kDa form. The 27 kDa form has no activity while the 22/25 kDa form can act as activator for collagenase.
細胞内局在	Secreted > extracellular space > extracellular matrix.

画像



All lanes : Anti-MMP1 antibody (ab38929)

Lane 1 : Human MMP1.

Lane 2 : Cell Media from human chondrosarcoma (no treatment).

Lane 3 : Cell Media from human chondrosarcoma (treated with TPA).

Predicted band size: 54 kDa

Observed band size: 53 kDa

Please note: All products are "FOR RESEARCH USE ONLY. NOT FOR USE IN DIAGNOSTIC PROCEDURES"

Our Abpromise to you: Quality guaranteed and expert technical support

- Replacement or refund for products not performing as stated on the datasheet
- Valid for 12 months from date of delivery
- Response to your inquiry within 24 hours

- We provide support in Chinese, English, French, German, Japanese and Spanish
- Extensive multi-media technical resources to help you
- We investigate all quality concerns to ensure our products perform to the highest standards

If the product does not perform as described on this datasheet, we will offer a refund or replacement. For full details of the Abpromise, please visit <https://www.abcam.co.jp/abpromise> or contact our technical team.

Terms and conditions

- Guarantee only valid for products bought direct from Abcam or one of our authorized distributors