

Anti-MMACHC/CbIC antibody ab96195

2 References [画像数 2](#)

医薬用外劇物

製品の概要

| | |
|--------------|---|
| 製品名 | Anti-MMACHC/CbIC antibody |
| 製品の詳細 | Rabbit polyclonal to MMACHC/CbIC |
| 由来種 | Rabbit |
| アプリケーション | 適用あり: WB, ICC/IF |
| 種交差性 | 交差種: Human 交差が予測される動物種: Mouse, Rat, Cow  |
| 免疫原 | Recombinant fragment corresponding to Human MMACHC/CbIC aa 1-188. Database link: NP_056321 |
| ポジティブ・コントロール | 293T and Raji whole cell lysates; HeLa cells; A431, H1299, HeLaS3 and HepG2 cell lines |
| 特記事項 | <p>The Life Science industry has been in the grips of a reproducibility crisis for a number of years. Abcam is leading the way in addressing this with our range of recombinant monoclonal antibodies and knockout edited cell lines for gold-standard validation. Please check that this product meets your needs before purchasing.</p> <p>If you have any questions, special requirements or concerns, please send us an inquiry and/or contact our Support team ahead of purchase. Recommended alternatives for this product can be found below, along with publications, customer reviews and Q&As</p> |

製品の特性

| | |
|--------|---|
| 製品の状態 | Liquid |
| 保存方法 | Shipped at 4°C. Upon delivery aliquot and store at -20°C or -80°C. Avoid repeated freeze / thaw cycles. |
| バッファー | pH: 7.00 Preservative: 0.01% Thimerosal (merthiolate) Constituents: 1.21% Tris, 0.75% Glycine, 10% Glycerol (glycerin, glycerine) |
| 精製度 | Immunogen affinity purified |
| ポリ/モノ | ポリクローナル |
| アイソタイプ | IgG |

アプリケーション

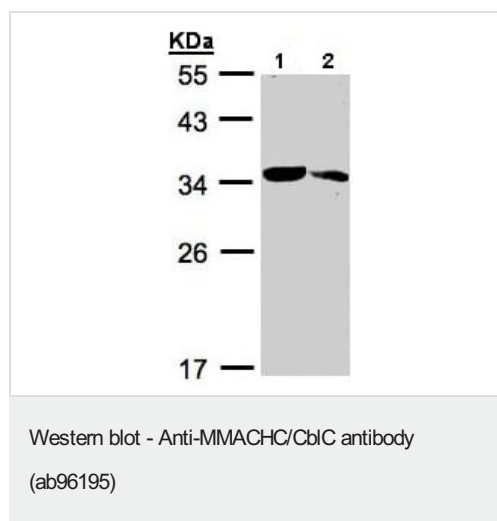
The Abpromise guarantee Abpromise保証は、次のテスト済みアプリケーションにおけるab96195の使用に適用されます
アプリケーションノートには、推奨の開始希釈率がありますが、適切な希釈率につきましてはご確認ください。

| アプリケーション | Abreviews | 特記事項 |
|----------|-----------|---|
| WB | | 1/500 - 1/3000. Predicted molecular weight: 32 kDa. |
| ICC/IF | | 1/100 - 1/200. |

ターゲット情報

| | |
|-------|---|
| 機能 | May be involved in the binding and intracellular trafficking of cobalamin (vitamin B12). |
| 組織特異性 | Widely expressed. Expressed at higher level in fetal liver. Also expressed in spleen, lymph node, thymus and bone marrow. Weakly or not expressed in peripheral blood leukocytes. |
| パスウェイ | Cofactor biosynthesis; adenosylcobalamin biosynthesis. |
| 関連疾患 | Defects in MMACHC are the cause of methylmalonic aciduria and homocystinuria type cblC (MMACHC) [MIM:277400]. MMACHC is a disorder of cobalamin metabolism characterized by decreased levels of the coenzymes adenosylcobalamin (AdoCbl) and methylcobalamin (MeCbl). Affected individuals may have developmental, hematologic, neurologic, metabolic, ophthalmologic, and dermatologic clinical findings. Although considered a disease of infancy or childhood, some individuals develop symptoms in adulthood. |
| 配列類似性 | Belongs to the MMACHC family. |

画像



All lanes : Anti-MMACHC/CblC antibody (ab96195) at 1/1000 dilution

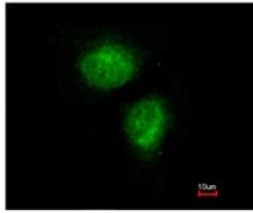
Lane 1 : 293T whole cell lysate

Lane 2 : Raji whole cell lysate

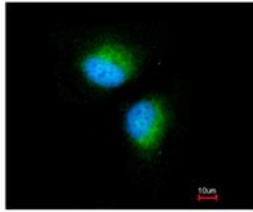
Lysates/proteins at 30 µg per lane.

Predicted band size: 32 kDa

12% SDS-PAGE



ab96195, at 1/100 dilution, staining MMACHC/CblC in paraformaldehyde-fixed HeLa cells by Immunofluorescence. Lower image is merged with DNA probe.



Immunocytochemistry/ Immunofluorescence - Anti-MMACHC/CblC antibody (ab96195)

Please note: All products are "FOR RESEARCH USE ONLY. NOT FOR USE IN DIAGNOSTIC PROCEDURES"

Our Abpromise to you: Quality guaranteed and expert technical support

- Replacement or refund for products not performing as stated on the datasheet
- Valid for 12 months from date of delivery
- Response to your inquiry within 24 hours
- We provide support in Chinese, English, French, German, Japanese and Spanish
- Extensive multi-media technical resources to help you
- We investigate all quality concerns to ensure our products perform to the highest standards

If the product does not perform as described on this datasheet, we will offer a refund or replacement. For full details of the Abpromise, please visit <https://www.abcam.co.jp/abpromise> or contact our technical team.

Terms and conditions

- Guarantee only valid for products bought direct from Abcam or one of our authorized distributors