


Anti-MLF1 Interacting Protein/PBIP1 (phospho T78) antibody ab115570

画像数 1

製品の概要

製品名	Anti-MLF1 Interacting Protein/PBIP1 (phospho T78) antibody
製品の詳細	Rabbit polyclonal to MLF1 Interacting Protein/PBIP1 (phospho T78)
由来種	Rabbit
アプリケーション	適用あり: IHC-P
種交差性	交差種: Human 交差が予測される動物種: Mouse, Rat, Cow, Dog, Chimpanzee 
免疫原	Synthetic phosphopeptide conjugated to KLH, corresponding to amino acids surrounding Thr78 of Human MLF1 Interacting Protein/PBIP1.
ポジティブ・コントロール	Human prostate tissue
特記事項	<p>The Life Science industry has been in the grips of a reproducibility crisis for a number of years. Abcam is leading the way in addressing this with our range of recombinant monoclonal antibodies and knockout edited cell lines for gold-standard validation. Please check that this product meets your needs before purchasing.</p> <p>If you have any questions, special requirements or concerns, please send us an inquiry and/or contact our Support team ahead of purchase. Recommended alternatives for this product can be found below, along with publications, customer reviews and Q&As</p>

製品の特性

製品の状態	Liquid
保存方法	Shipped at 4°C. Upon delivery aliquot. Store at -20°C or -80°C. Avoid freeze / thaw cycle.
バッファー	pH: 7.20 Preservative: 0.01% Sodium azide Constituents: 0.88% Sodium chloride, 0.424% Potassium phosphate
精製度	Immunogen affinity purified
ポリ/モノ	ポリクローナル
アイソタイプ	IgG

アプリケーション

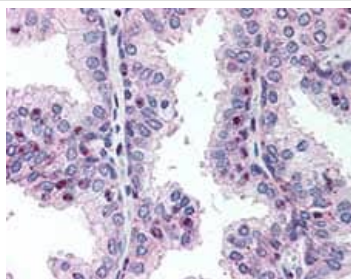
The Abpromise guarantee Abpromise保証は、 次のテスト済みアプリケーションにおけるab115570の使用に適用されます
アプリケーションノートには、推奨の開始希釈率がありますが、適切な希釈率につきましてはご検討ください。

アプリケーション	Abreviews	特記事項
IHC-P		Use a concentration of 10 µg/ml. Perform heat mediated antigen retrieval with citrate buffer pH 6 before commencing with IHC staining protocol.

ターゲット情報

機能	Component of the CENPA-NAC (nucleosome-associated) complex, a complex that plays a central role in assembly of kinetochore proteins, mitotic progression and chromosome segregation. The CENPA-NAC complex recruits the CENPA-CAD (nucleosome distal) complex and may be involved in incorporation of newly synthesized CENPA into centromeres. Plays an important role in the correct PLK1 localization to the mitotic kinetochores. A scaffold protein responsible for the initial recruitment and maintenance of the kinetochore PLK1 population until its degradation. Involved in transcriptional repression.
組織特異性	Expressed at high levels in the testis, fetal liver, thymus, bone marrow and at lower levels in the lymph nodes, placenta, colon and spleen. Present in all cell lines examined, including B-cells, T-cells, epithelial cells and fibroblast cells. Expressed at high levels in glioblastoma cell lines.
翻訳後修飾	Phosphorylated by PLK1 at Thr-78, creating a self-tethering site that specifically interacts with the polo-box domain of PLK1.
細胞内局在	Cytoplasm. Nucleus. Chromosome > centromere > kinetochore. Localizes in the kinetochore domain of centromeres. Colocalizes with PLK1 at the interzone between the inner and the outer kinetochore plates.

画像



Human Prostate (formalin-fixed, paraffin-embedded) stained with ab115570 at 10 µg/ml followed by biotinylated goat anti-rabbit IgG secondary antibody, alkaline phosphatase-streptavidin and chromogen.

Immunohistochemistry (Formalin/PFA-fixed paraffin-embedded sections) - Anti-MLF1 Interacting Protein/PBIP1 (phospho T78) antibody (ab115570)

Please note: All products are "FOR RESEARCH USE ONLY. NOT FOR USE IN DIAGNOSTIC PROCEDURES"

Our Abpromise to you: Quality guaranteed and expert technical support

- Replacement or refund for products not performing as stated on the datasheet
- Valid for 12 months from date of delivery
- Response to your inquiry within 24 hours

- We provide support in Chinese, English, French, German, Japanese and Spanish
- Extensive multi-media technical resources to help you
- We investigate all quality concerns to ensure our products perform to the highest standards

If the product does not perform as described on this datasheet, we will offer a refund or replacement. For full details of the Abpromise, please visit <https://www.abcam.co.jp/abpromise> or contact our technical team.

Terms and conditions

- Guarantee only valid for products bought direct from Abcam or one of our authorized distributors