

Anti-Mkl1/MRTFA antibody ab113264

3 References [画像数 1](#)

製品の概要

製品名	Anti-Mkl1/MRTFA antibody
製品の詳細	Rabbit polyclonal to Mkl1/MRTFA
由来種	Rabbit
アプリケーション	適用あり: IHC-P
種交差性	交差種: Human 交差が予測される動物種: Chimpanzee, Gorilla, Orangutan 
免疫原	Synthetic peptide corresponding to Human Mkl1/MRTFA aa 700-800. Database link: NP_065882.1
ポジティブ・コントロール	Human Breast Carcinoma, Prostate Carcinoma, Skin Basal Cell Carcinoma tissue.
特記事項	<p>The Life Science industry has been in the grips of a reproducibility crisis for a number of years. Abcam is leading the way in addressing this with our range of recombinant monoclonal antibodies and knockout edited cell lines for gold-standard validation. Please check that this product meets your needs before purchasing.</p> <p>If you have any questions, special requirements or concerns, please send us an inquiry and/or contact our Support team ahead of purchase. Recommended alternatives for this product can be found below, along with publications, customer reviews and Q&As</p>

製品の特性

製品の状態	Liquid
保存方法	Shipped at 4°C. Upon delivery aliquot and store at -20°C. Avoid freeze / thaw cycles.
バッファー	pH: 6.8 Preservative: 0.09% Sodium azide Constituents: 99% Tris buffered saline, 0.1% BSA
精製度	Immunogen affinity purified
ポリ/モノ	ポリクローナル
アイソタイプ	IgG

アプリケーション

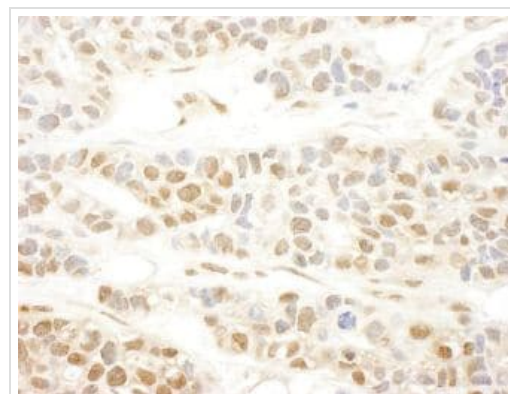
The Abpromise guarantee **Abpromise保証は、** 次のテスト済みアプリケーションにおけるab113264の使用に適用されます
 アプリケーションノートには、推奨の開始希釈率がありますが、適切な希釈率につきましてはご確認ください。

アプリケーション	Abreviews	特記事項
IHC-P		1/100 - 1/500. Perform heat mediated antigen retrieval with citrate buffer pH 6 before commencing with IHC staining protocol.

ターゲット情報

機能	Transcriptional coactivator of serum response factor (SRF) with the potential to modulate SRF target genes. Suppresses TNF-induced cell death by inhibiting activation of caspases; its transcriptional activity is indispensable for the antiapoptotic function. It may up-regulate antiapoptotic molecules, which in turn inhibit caspase activation.
組織特異性	Ubiquitously expressed, has been detected in lung, placenta, small intestine, liver, kidney, spleen, thymus, colon, muscle, heart and brain.
関連疾患	Note=A chromosomal aberration involving MKL1 may be a cause of acute megakaryoblastic leukemia. Translocation t(1;22)(p13;q13) with RBM15. Although both reciprocal fusion transcripts are detected in acute megakaryoblastic leukemia (AMKL, FAB-M7), the RBM15-MKL1 chimeric protein has all the putative functional domains encoded by each gene and is the candidate oncogene.
配列類似性	Contains 2 RPEL repeats. Contains 1 SAP domain.
ドメイン	The N-terminal region is required for nuclear localization and the C-terminal region mediates transcriptional activity. The RPEL repeats mediate binding to globular actin.
細胞内局在	Cytoplasm. Nucleus. Binding to globular actin is required to maintain cytoplasmic localization.

画像



Formalin-fixed, paraffin-embedded section of Human breast carcinoma.

Antibody: ab113264 used at a dilution of 1/250.

Detection: DAB staining.

Immunohistochemistry (Formalin/PFA-fixed paraffin-embedded sections) - Anti-Mkl1/MRTFA antibody (ab113264)

Please note: All products are "FOR RESEARCH USE ONLY. NOT FOR USE IN DIAGNOSTIC PROCEDURES"

Our Abpromise to you: Quality guaranteed and expert technical support

- Replacement or refund for products not performing as stated on the datasheet
- Valid for 12 months from date of delivery
- Response to your inquiry within 24 hours

- We provide support in Chinese, English, French, German, Japanese and Spanish
- Extensive multi-media technical resources to help you
- We investigate all quality concerns to ensure our products perform to the highest standards

If the product does not perform as described on this datasheet, we will offer a refund or replacement. For full details of the Abpromise, please visit <https://www.abcam.co.jp/abpromise> or contact our technical team.

Terms and conditions

- Guarantee only valid for products bought direct from Abcam or one of our authorized distributors