


Anti-MKK7 (phospho S271 + T275) antibody ab4762

★★★★☆ [1 Abreviews](#) [2 References](#) [画像数 1](#)

製品の概要

製品名	Anti-MKK7 (phospho S271 + T275) antibody
製品の詳細	Rabbit polyclonal to MKK7 (phospho S271 + T275)
由来種	Rabbit
特異性	This antibody does not react with other MEK isoforms.
アプリケーション	適用あり: WB
種交差性	交差が予測される動物種: Mouse 
免疫原	Synthetic peptide corresponding to Human MKK7 (phospho S271 + T275).
ポジティブ・コントロール	WB: Fusion protein expressing MEK 7.
特記事項	<p>The Life Science industry has been in the grips of a reproducibility crisis for a number of years. Abcam is leading the way in addressing this with our range of recombinant monoclonal antibodies and knockout edited cell lines for gold-standard validation. Please check that this product meets your needs before purchasing.</p> <p>If you have any questions, special requirements or concerns, please send us an inquiry and/or contact our Support team ahead of purchase. Recommended alternatives for this product can be found below, along with publications, customer reviews and Q&As</p>

製品の特性

製品の状態	Liquid
保存方法	Shipped at 4°C. Upon delivery aliquot and store at -20°C or -80°C. Avoid repeated freeze / thaw cycles.
バッファー	pH: 7.30 Preservative: 0.05% Sodium azide Constituents: PBS, 0.1% BSA
精製度	BSA is IgG and protease free Immunogen affinity purified
特記事項 (精製)	Purified from rabbit serum by sequential epitope specific chromatography. The antibody has been negatively preadsorbed using a non-phosphopeptide corresponding to the site of phosphorylation to remove antibody that is reactive with non-phosphorylated MEK 7. The final product is

generated by affinity chromatography using an MEK 7 derived peptide that is phosphorylated at serine 271 and threonine 275.

ポリモノ
アイソタイプ
ポリクローナル
IgG

アプリケーション

The Abpromise guarantee Abpromise保証は、次のテスト済みアプリケーションにおけるab4762の使用に適用されます
アプリケーションノートには、推奨の開始希釈率がありますが、適切な希釈率につきましてはご検討ください。

アプリケーション	Abreviews	特記事項
WB	★★★★★ (1)	Use a concentration of 0.1 - 1 µg/ml. Predicted molecular weight: 38 kDa.

ターゲット情報

機能 Stress activated, dual specificity kinase that activates the JUN kinases MAPK8/JNK1, MAPK9/JNK2 and MAPK10/JNK3.

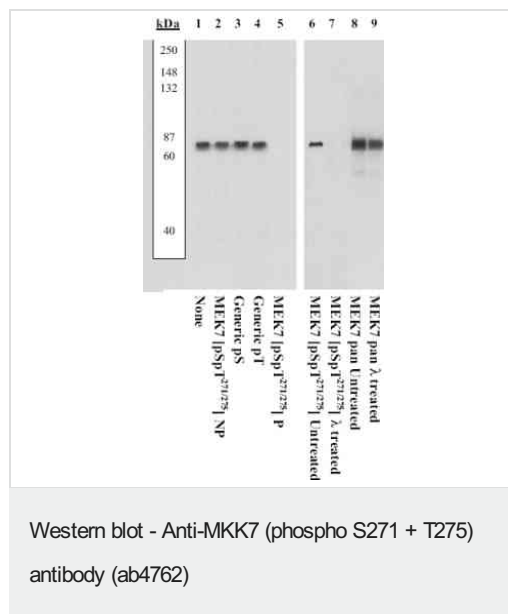
組織特異性 Ubiquitous; with highest level of expression in skeletal muscle. Isoform 3 is found at low levels in placenta, fetal liver, and skeletal muscle.

配列類似性 Belongs to the protein kinase superfamily. STE Ser/Thr protein kinase family. MAP kinase kinase subfamily.
Contains 1 protein kinase domain.

翻訳後修飾 Activated by phosphorylation on Ser/Thr.

細胞内局在 Nucleus. Cytoplasm.

画像



Peptide Competition: Extracts prepared from background extracts with tagged fusion protein expressing MEK 7 added were resolved by SDS-PAGE on a 10% polyacrylamide gel and transferred to PVDF. Membranes were blocked with a 5% BSA-TBST buffer overnight at 4°C, then were incubated with 0.50 µg/mL ab4762 antibody for two hours at room temperature in a 3% BSA-TBST buffer, following prior incubation with: no peptide (1), the non-phosphopeptide corresponding to the

Please note: All products are "FOR RESEARCH USE ONLY. NOT FOR USE IN DIAGNOSTIC PROCEDURES"

Our Abpromise to you: Quality guaranteed and expert technical support

- Replacement or refund for products not performing as stated on the datasheet
- Valid for 12 months from date of delivery
- Response to your inquiry within 24 hours

- We provide support in Chinese, English, French, German, Japanese and Spanish
- Extensive multi-media technical resources to help you
- We investigate all quality concerns to ensure our products perform to the highest standards

If the product does not perform as described on this datasheet, we will offer a refund or replacement. For full details of the Abpromise, please visit <https://www.abcam.co.jp/abpromise> or contact our technical team.

Terms and conditions

- Guarantee only valid for products bought direct from Abcam or one of our authorized distributors