

Anti-MK2 (phospho T334) antibody ab63378

★★★★☆ [1 Abreviews](#) [6 References](#) [画像数 3](#)

製品の概要

製品名	Anti-MK2 (phospho T334) antibody
製品の詳細	Rabbit polyclonal to MK2 (phospho T334)
由来種	Rabbit
特異性	Detects endogenous levels of MK2 only when phosphorylated at threonine 334 (human) and threonine 320 (mouse and rat). The immunogen sequence used to produce ab63378 is 90% identical to the corresponding region of MK3, therefore ab63378 may cross react with human MK3 but this has not been confirmed.
アプリケーション	適用あり: ICC/IF, WB, IHC-P
種交差性	交差種: Mouse, Human
免疫原	Synthetic peptide corresponding to Human MK2 aa 300-400 (phospho T334). Database link: P49137

 [Run BLAST with](#)

 [Run BLAST with](#)

特記事項

The Life Science industry has been in the grips of a reproducibility crisis for a number of years. Abcam is leading the way in addressing this with our range of recombinant monoclonal antibodies and knockout edited cell lines for gold-standard validation. Please check that this product meets your needs before purchasing.

If you have any questions, special requirements or concerns, please send us an inquiry and/or contact our Support team ahead of purchase. Recommended alternatives for this product can be found below, along with publications, customer reviews and Q&As

製品の特性

製品の状態	Liquid
保存方法	Shipped at 4°C. Store at -20°C. Stable for 12 months at -20°C.
バッファー	pH: 7.40 Preservative: 0.02% Sodium azide Constituents: PBS, 50% Glycerol (glycerin, glycerine), 0.87% Sodium chloride Without Mg ²⁺ and Ca ²⁺
精製度	Immunogen affinity purified
特記事項 (精製)	The antibody was affinity-purified from rabbit antiserum by affinity chromatography using epitope-

specific phosphopeptide. The antibody against non-phosphopeptide was removed by chromatography using non-phosphopeptide corresponding to the phosphorylation site.

ポリ/モノ

ポリクローナル

アイソタイプ

IgG

アプリケーション

The Abpromise guarantee Abpromise保証は、次のテスト済みアプリケーションにおけるab63378の使用に適用されます
アプリケーションノートには、推奨の開始希釈率がありますが、適切な希釈率につきましてはご検討ください。

アプリケーション	Abreviews	特記事項
ICC/IF		Use a concentration of 1 µg/ml.
WB	★★★★★ (1)	1/500 - 1/1000. Detects a band of approximately 46 kDa (predicted molecular weight: 46 kDa).
IHC-P		1/50 - 1/100.

ターゲット情報

機能

Its physiological substrate seems to be the small heat shock protein (HSP27/HSP25). In vitro can phosphorylate glycogen synthase at 'Ser-7' and tyrosine hydroxylase (on 'Ser-19' and 'Ser-40'). This kinase phosphorylates Ser in the peptide sequence, Hyd-X-R-X(2)-S, where Hyd is a large hydrophobic residue (By similarity). Mediates both ERK and p38 MAPK/MAPK14 dependent neutrophil responses. Participates in TNF alpha-stimulated exocytosis of secretory vesicles in neutrophils. Plays a role in phagocytosis-induced respiratory burst activity.

組織特異性

Expressed in all tissues examined.

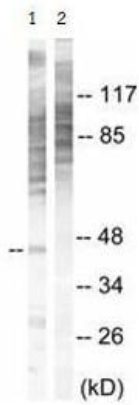
配列類似性

Belongs to the protein kinase superfamily. CAMK Ser/Thr protein kinase family. Contains 1 protein kinase domain.

翻訳後修飾

Phosphorylated and activated by MAP kinase.

画像



Western blot - Anti-MK2 (phospho T334) antibody (ab63378)

All lanes : Anti-MK2 (phospho T334) antibody (ab63378) at 1/500 dilution

Lane 1 : NIH/3T3 cell extract

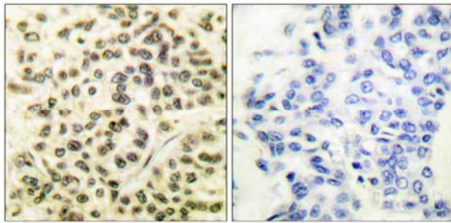
Lane 2 : NIH/3T3 cell extract with immunising phosphopeptide at 10 µg

Lysates/proteins at 30 µg per lane.

Predicted band size: 46 kDa

Observed band size: 46 kDa

Additional bands at: 28 kDa. We are unsure as to the identity of these extra bands.



Immunohistochemistry (Formalin/PFA-fixed paraffin-embedded sections) - Anti-MK2 (phospho T334) antibody (ab63378)

Immunohistochemical analysis of paraffin-embedded human breast carcinoma tissue labelled with ab63378 at 1/50 dilution. Right hand panel was treated with immunising phosphopeptide.

Immunocytochemistry/ Immunofluorescence - Anti-MK2 (phospho T334) antibody (ab63378)

ICC/IF image of ab63378 stained HeLa cells. The cells were 100% methanol fixed (5 min) and then incubated in 1%BSA / 10% normal goat serum / 0.3M glycine in 0.1% PBS-Tween for 1h to permeabilise the cells and block non-specific protein-protein interactions. The cells were then incubated with the antibody (ab63378, 1µg/ml) overnight at +4°C. The secondary antibody (green) was Alexa Fluor® 488 goat anti-rabbit IgG (H+L) used at a 1/1000 dilution for 1h. Alexa Fluor® 594 WGA was used to label plasma membranes (red) at a 1/200 dilution for 1h. DAPI was used to stain the cell nuclei (blue) at a concentration of 1.43µM.

Please note: All products are "FOR RESEARCH USE ONLY. NOT FOR USE IN DIAGNOSTIC PROCEDURES"

Our Abpromise to you: Quality guaranteed and expert technical support

- Replacement or refund for products not performing as stated on the datasheet
- Valid for 12 months from date of delivery

- Response to your inquiry within 24 hours
- We provide support in Chinese, English, French, German, Japanese and Spanish
- Extensive multi-media technical resources to help you
- We investigate all quality concerns to ensure our products perform to the highest standards

If the product does not perform as described on this datasheet, we will offer a refund or replacement. For full details of the Abpromise, please visit <https://www.abcam.co.jp/abpromise> or contact our technical team.

Terms and conditions

- Guarantee only valid for products bought direct from Abcam or one of our authorized distributors