

Anti-Mitotic Cells antibody [8B3G] ab8956

★★★★★ [2 Abreviews](#) [2 References](#) [画像数 3](#)

製品の概要

製品名	Anti-Mitotic Cells antibody [8B3G]
製品の詳細	Mouse monoclonal [8B3G] to Mitotic Cells
由来種	Mouse
特異性	Strongly stains mitotic cells and can therefore be used in flow cytometric analyses of cell suspensions to detect the mitotic index. Together with a quantitative DNA staining procedure (e.g. propidium iodide) this antibody clearly distinguishes these M-phase cells from cell at other stages of the cell cycle. Dynamic information can be obtained by combining BrdU incorporation with antibody staining, which can distinguish and quantitate the four major fractions of the cell cycle. This antibody can be used for flow cytometric analyses and immunocytochemistry, it is not suitable for immunoblotting.
アプリケーション	適用あり: Flow Cyt, IHC-Fr
種交差性	交差種: Human, Zebrafish
免疫原	Tissue, cells or virus corresponding to Human Mitotic Cells. Total cell lysate of the human bladder carcinoma cell line T24.
特記事項	<p>The Life Science industry has been in the grips of a reproducibility crisis for a number of years. Abcam is leading the way in addressing this with our range of recombinant monoclonal antibodies and knockout edited cell lines for gold-standard validation. Please check that this product meets your needs before purchasing.</p> <p>If you have any questions, special requirements or concerns, please send us an inquiry and/or contact our Support team ahead of purchase. Recommended alternatives for this product can be found below, along with publications, customer reviews and Q&As</p>

製品の特性

製品の状態	Liquid
保存方法	Shipped at 4°C. Store at +4°C short term (1-2 weeks). Upon delivery aliquot. Store at -20°C or -80°C. Avoid freeze / thaw cycle.
バッファー	Preservative: 0.09% Sodium azide Constituent: PBS
精製度	Immunogen affinity purified
ポリ/モノ	モノクローナル

クローン名	8B3G
ミエローマ	Sp2/0-Ag14
アイソタイプ	IgM

アプリケーション

The Abpromise guarantee **Abpromise保証は、**次のテスト済みアプリケーションにおけるab8956の使用に適用されます
アプリケーションノートには、推奨の開始希釈率がありますが、適切な希釈率につきましてはご検討ください。

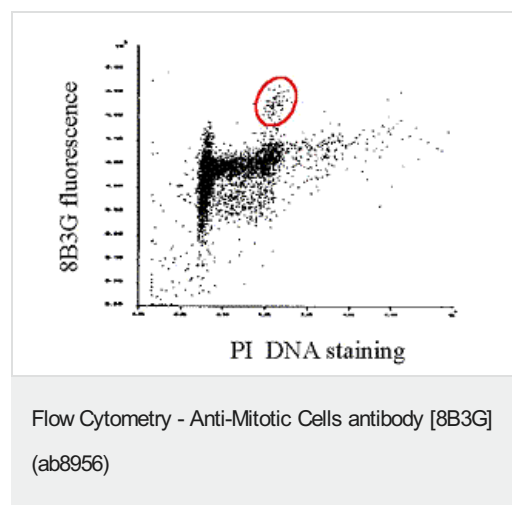
アプリケーション	Abreviews	特記事項
Flow Cyt		1/50 - 1/100. ab91545 - Mouse monoclonal IgM, is suitable for use as an isotype control with this antibody.
IHC-Fr		Use at an assay dependent concentration.

ターゲット情報

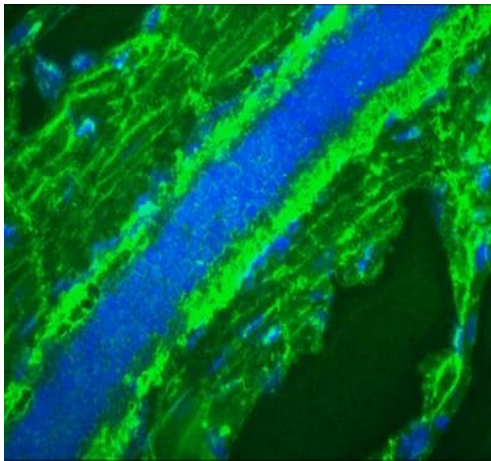
関連性

The life cycle of a eukaryotic cell consists of various phases, two of which can easily be identified. Firstly, during mitosis (M-phase), in which the cell divides into two identical daughter cells, chromosome condensation and spindle formation are microscopically visible. Secondly, in S-phase the DNA of a cell is replicated, a process that can be detected using biochemical techniques. In between the M and S phase two gap phases occur: the G1-phase, the gap between mitosis and the start of DNA replication, and G2-phase, the gap between completion of DNA replication and the onset of mitosis. From G1-phase a cell can leave the cell cycle and enter G0, a 'quiescent' phase. Regulation of the cell cycle predominantly occurs at three major control points, which govern the transition from G0 to G1, from G1 to S and from G2 to M-phase.

画像

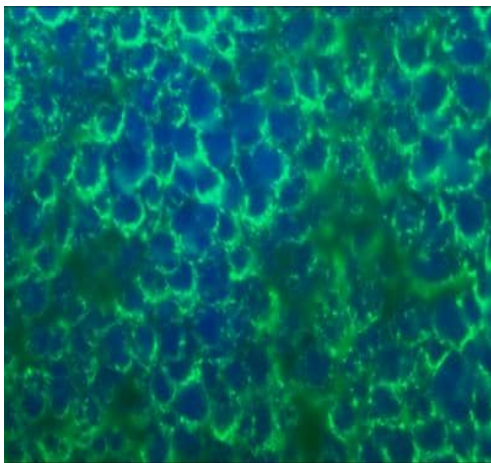


Dual parameter flow cytometric analysis of human colon cancer HT29 cells stained with monoclonal antibody 8B3G and propidium iodide (PI). The mitotic cell fraction is encircled.



Immunohistochemistry (Frozen sections) - Anti-Mitotic Cells antibody [8B3G] (ab8956)

ab8956 staining a membrane-associated compound in proliferating (all) cells in tissue sections of 9 day old Zebrafish embryos by Immunohistochemistry (Frozen sections). Samples were frozen sections fixed in Acetone:Methanol 1:1. ab8956 used at 1:50 dilution and incubated for 45 minutes at room temperature.



Immunohistochemistry (Frozen sections) - Anti-Mitotic Cells antibody [8B3G] (ab8956)

ab8956 staining a membrane-associated compound in proliferating (all) cells in tissue sections of 9 day old Zebrafish embryos by Immunohistochemistry (Frozen sections). Samples were frozen sections fixed in Acetone:Methanol 1:1. ab8956 used at 1:50 dilution and incubated for 45 minutes at room temperature.

Please note: All products are "FOR RESEARCH USE ONLY. NOT FOR USE IN DIAGNOSTIC PROCEDURES"

Our Abpromise to you: Quality guaranteed and expert technical support

- Replacement or refund for products not performing as stated on the datasheet
- Valid for 12 months from date of delivery
- Response to your inquiry within 24 hours
- We provide support in Chinese, English, French, German, Japanese and Spanish
- Extensive multi-media technical resources to help you
- We investigate all quality concerns to ensure our products perform to the highest standards

If the product does not perform as described on this datasheet, we will offer a refund or replacement. For full details of the Abpromise, please visit <https://www.abcam.co.jp/abpromise> or contact our technical team.

Terms and conditions

- Guarantee only valid for products bought direct from Abcam or one of our authorized distributors