

# Anti-Mitochondrial Ferritin antibody ab93428

## 1 References [画像数 1](#)

### 製品の概要

---

製品名	Anti-Mitochondrial Ferritin antibody
製品の詳細	Rabbit polyclonal to Mitochondrial Ferritin
由来種	Rabbit
アプリケーション	<b>適用あり:</b> WB
種交差性	<b>交差種:</b> Human
免疫原	Synthetic peptide corresponding to Human Mitochondrial Ferritin aa 50-150 conjugated to keyhole limpet haemocyanin. Database link: <a href="#">Q8N4E7</a> (Peptide available as <a href="#">ab93799</a> )
ポジティブ・コントロール	This antibody gave a positive signal in both Hela and HEK293 whole cell lysates.
特記事項	<p>The Life Science industry has been in the grips of a reproducibility crisis for a number of years. Abcam is leading the way in addressing this with our range of recombinant monoclonal antibodies and knockout edited cell lines for gold-standard validation. Please check that this product meets your needs before purchasing.</p> <p>If you have any questions, special requirements or concerns, please send us an inquiry and/or contact our Support team ahead of purchase. Recommended alternatives for this product can be found below, along with publications, customer reviews and Q&amp;As</p>

### 製品の特性

---

製品の状態	Liquid
保存方法	Shipped at 4°C. Store at +4°C short term (1-2 weeks). Upon delivery aliquot. Store at -20°C or -80°C. Avoid freeze / thaw cycle.
バッファー	pH: 7.40 Preservative: 0.02% Sodium azide Constituent: PBS
精製度	Batches of this product that have a concentration < 1mg/ml may have BSA added as a stabilising agent. If you would like information about the formulation of a specific lot, please contact our scientific support team who will be happy to help. Immunogen affinity purified

ポリモノ  
アイソタイプ

ポリクローナル  
IgG

## アプリケーション

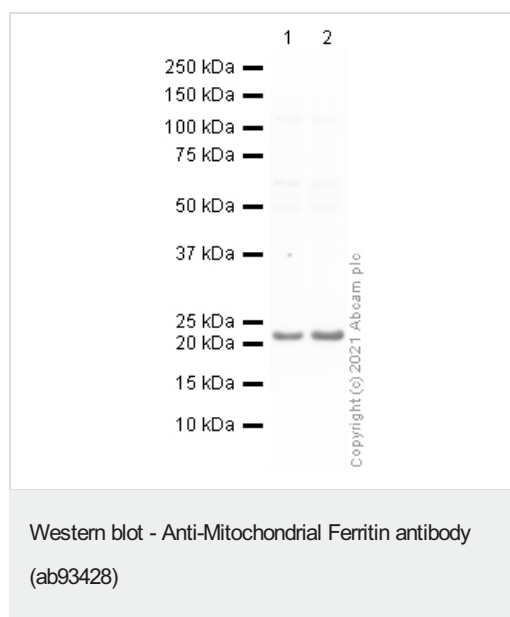
**The Abpromise guarantee**      **Abpromise保証は、** 次のテスト済みアプリケーションにおけるab93428の使用に適用されます  
アプリケーションノートには、推奨の開始希釈率がありますが、適切な希釈率につきましてはご確認ください。

アプリケーション	Abreviews	特記事項
WB		1/250. Detects a band of approximately 22 kDa (predicted molecular weight: 27 kDa).

## ターゲット情報

機能	Stores iron in a soluble, non-toxic, readily available form. Important for iron homeostasis. Has ferroxidase activity. Iron is taken up in the ferrous form and deposited as ferric hydroxides after oxidation.
組織特異性	Detected in testis and erythroleukemia. Expression is very low or not detectable in brain, colon, heart, kidney, liver, lung, muscle, placental, spleen and small intestine.
配列類似性	Belongs to the ferritin family. Contains 1 ferritin-like diiron domain.
細胞内局在	Mitochondrion.

## 画像



**All lanes :** Anti-Mitochondrial Ferritin antibody (ab93428) at 1 µg/ml

**Lane 1 :** HeLa whole cell lysate

**Lane 2 :** HEK293 whole cell lysate

Lysates/proteins at 10 µg per lane.

### **Secondary**

**All lanes :** Goat polyclonal to Rabbit IgG - H&L - Pre-Adsorbed (HRP) at 1/50000 dilution

Performed under reducing conditions.

**Predicted band size:** 27 kDa

**Exposure time:** 4 minutes

Blocking buffer: 2% BSA

Gel type: MES

**Please note:** All products are "FOR RESEARCH USE ONLY. NOT FOR USE IN DIAGNOSTIC PROCEDURES"

### **Our Abpromise to you: Quality guaranteed and expert technical support**

---

- Replacement or refund for products not performing as stated on the datasheet
- Valid for 12 months from date of delivery
- Response to your inquiry within 24 hours
  
- We provide support in Chinese, English, French, German, Japanese and Spanish
- Extensive multi-media technical resources to help you
- We investigate all quality concerns to ensure our products perform to the highest standards

If the product does not perform as described on this datasheet, we will offer a refund or replacement. For full details of the Abpromise, please visit <https://www.abcam.co.jp/abpromise> or contact our technical team.

### **Terms and conditions**

---

- Guarantee only valid for products bought direct from Abcam or one of our authorized distributors