

Anti-MiTF antibody ab20663

★★★★★ [3 Abreviews](#) [39 References](#) [画像数 2](#)

製品の概要

製品名	Anti-MiTF antibody
製品の詳細	Rabbit polyclonal to MiTF
由来種	Rabbit
アプリケーション	適用あり: WB 適用なし: IHC (PFA fixed)
種交差性	交差種: Mouse, Rat, Human
免疫原	Synthetic peptide conjugated to KLH derived from within residues 500 to the C-terminus of Human MiTF. Immunogen の所有権に関して (Peptide available as ab21454 .)
特記事項	<p>The Life Science industry has been in the grips of a reproducibility crisis for a number of years. Abcam is leading the way in addressing this with our range of recombinant monoclonal antibodies and knockout edited cell lines for gold-standard validation. Please check that this product meets your needs before purchasing.</p> <p>If you have any questions, special requirements or concerns, please send us an inquiry and/or contact our Support team ahead of purchase. Recommended alternatives for this product can be found below, along with publications, customer reviews and Q&As</p>

製品の特性

製品の状態	Liquid
保存方法	Shipped at 4°C. Store at +4°C short term (1-2 weeks). Upon delivery aliquot. Store at -20°C or -80°C. Avoid freeze / thaw cycle.
バッファー	<p>pH: 7.40</p> <p>Preservative: 0.02% Sodium azide</p> <p>Constituent: PBS</p> <p>Batches of this product that have a concentration < 1mg/ml may have BSA added as a stabilising agent. If you would like information about the formulation of a specific lot, please contact our scientific support team who will be happy to help.</p>
精製度	Immunogen affinity purified
ポリ/モノ	ポリクローナル
アイソタイプ	IgG

アプリケーション

The Abpromise guarantee Abpromise保証は、 次のテスト済みアプリケーションにおけるab20663の使用に適用されます

アプリケーションノートには、推奨の開始希釈率がありますが、適切な希釈率につきましてはご検討ください。

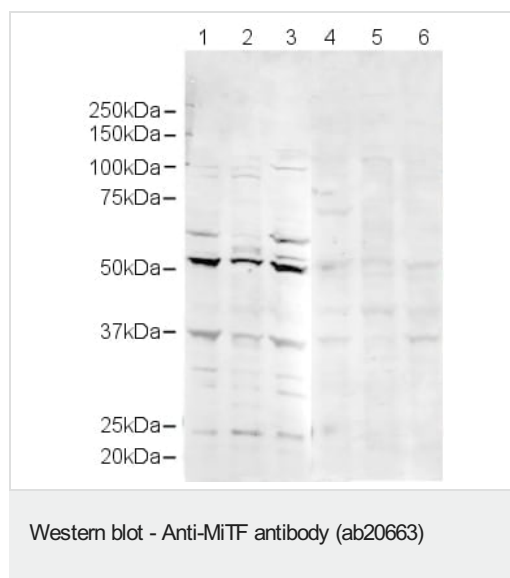
アプリケーション	Abreviews	特記事項
WB		Use a concentration of 1 µg/ml. Detects a band of approximately 52 kDa (predicted molecular weight: 52 kDa).

追加情報 Is unsuitable for IHC (PFA fixed).

ターゲット情報

機能	Transcription factor for tyrosinase and tyrosinase-related protein 1. Binds to a symmetrical DNA sequence (E-boxes) (5'-CACGTG-3') found in the tyrosinase promoter. Plays a critical role in the differentiation of various cell types as neural crest-derived melanocytes, mast cells, osteoclasts and optic cup-derived retinal pigment epithelium.
組織特異性	Isoform M is exclusively expressed in melanocytes and melanoma cells. Isoform A and isoform H are widely expressed in many cell types including melanocytes and retinal pigment epithelium (RPE). Isoform C is expressed in many cell types including RPE but not in melanocyte-lineage cells.
関連疾患	Defects in MITF are the cause of Waardenburg syndrome type 2A (WS2A) [MIM:193510]. It is a dominant inherited disorder characterized by sensorineural hearing loss and patches of depigmentation. The features show variable expression and penetrance. Defects in MITF are a cause of Waardenburg syndrome type 2 with ocular albinism (WS2-OA) [MIM:103470]. It is an ocular albinism with sensorineural deafness. Defects in MITF are the cause of Tietz syndrome (TIETZS) [MIM:103500]. It is an autosomal dominant disorder characterized by generalized hypopigmentation and profound, congenital, bilateral deafness. Penetrance is complete.
配列類似性	Belongs to the Mit/TFE family. Contains 1 basic helix-loop-helix (bHLH) domain.
翻訳後修飾	Phosphorylation at Ser-405 significantly enhances the ability to bind the tyrosinase promoter.
細胞内局在	Nucleus.

画像



All lanes : Anti-MiTF antibody (ab20663) at 1 µg/ml

Lane 1 : HeLa whole cell lysate

Lane 2 : HeLa nuclear lysate

Lane 3 : A431 whole cell lysate

Lane 4 : HeLa whole cell lysate with Human MiTF peptide ([ab21454](#)) at 1 µg/ml

Lane 5 : HeLa nuclear lysate with Human MiTF peptide ([ab21454](#)) at 1 µg/ml

Lane 6 : A431 whole cell lysate with Human MiTF peptide ([ab21454](#)) at 1 µg/ml

Lysates/proteins at 20 µg per lane.

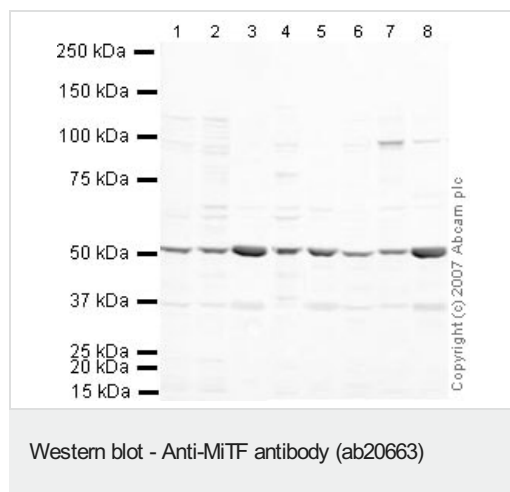
Secondary

All lanes : Alexa Fluor Goat polyclonal to Rabbit IgG (700) at 1/10000 dilution

Predicted band size: 52 kDa

Observed band size: 52 kDa

Additional bands at: 25 kDa, 37 kDa. We are unsure as to the identity of these extra bands.



All lanes : Anti-MiTF antibody (ab20663) at 1 µg/ml

Lane 1 : NIH/3T3 whole cell lysate ([ab7179](#))

Lane 2 : MEF1 (Mouse embryonic fibroblast cell line) Whole Cell Lysate

Lane 3 : Brain (Mouse) Tissue Lysate

Lane 4 : Testis (Mouse) Tissue Lysate - normal tissue

Lane 5 : Spinal Cord (Mouse) Tissue Lysate

Lane 6 : Ovary (Mouse) Tissue Lysate - normal tissue

Lane 7 : PC12 (Rat adrenal pheochromocytoma cell line) Whole Cell Lysate

Lane 8 : Brain (Rat) Tissue Lysate - normal tissue

Lysates/proteins at 10 µg per lane.

Secondary

All lanes : IRDye 680 Conjugated Goat Anti-Rabbit IgG (H+L) at
1/10000 dilution

Performed under reducing conditions.

Predicted band size: 52 kDa

Observed band size: 52 kDa

Please note: All products are "FOR RESEARCH USE ONLY. NOT FOR USE IN DIAGNOSTIC PROCEDURES"

Our Abpromise to you: Quality guaranteed and expert technical support

- Replacement or refund for products not performing as stated on the datasheet
- Valid for 12 months from date of delivery
- Response to your inquiry within 24 hours
- We provide support in Chinese, English, French, German, Japanese and Spanish
- Extensive multi-media technical resources to help you
- We investigate all quality concerns to ensure our products perform to the highest standards

If the product does not perform as described on this datasheet, we will offer a refund or replacement. For full details of the Abpromise, please visit <https://www.abcam.co.jp/abpromise> or contact our technical team.

Terms and conditions

- Guarantee only valid for products bought direct from Abcam or one of our authorized distributors