

Anti-Mipu1 antibody ab106432

2 References [画像数 3](#)

製品の概要

製品名	Anti-Mipu1 antibody
製品の詳細	Rabbit polyclonal to Mipu1
由来種	Rabbit
アプリケーション	適用あり: ICC/IF, IHC-P, WB
種交差性	交差種: Human
免疫原	Synthetic peptide corresponding to Human Mipu1 (N terminal). Database link: Q5HYK9
ポジティブ・コントロール	WB: Human heart tissue lysate IHC-P: Human brain tissue
特記事項	<p>The Life Science industry has been in the grips of a reproducibility crisis for a number of years. Abcam is leading the way in addressing this with our range of recombinant monoclonal antibodies and knockout edited cell lines for gold-standard validation. Please check that this product meets your needs before purchasing.</p> <p>If you have any questions, special requirements or concerns, please send us an inquiry and/or contact our Support team ahead of purchase. Recommended alternatives for this product can be found below, along with publications, customer reviews and Q&As</p>

製品の特性

製品の状態	Liquid
保存方法	Shipped at 4°C. Store at +4°C short term (1-2 weeks). Upon delivery aliquot. Store at -20°C. Avoid freeze / thaw cycle.
バッファー	pH: 7.2 Preservative: 0.02% Sodium azide Constituent: PBS
精製度	Immunogen affinity purified
ポリ/モノ	ポリクローナル
アイソタイプ	IgG

アプリケーション

The Abpromise guarantee

Abpromise保証は、次のテスト済みアプリケーションにおけるab106432の使用に適用されます

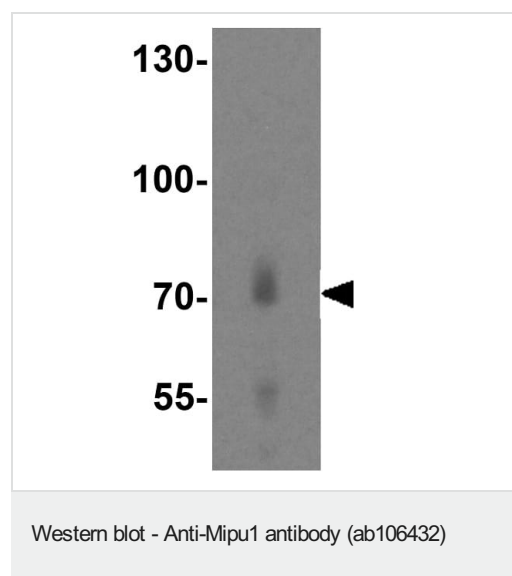
アプリケーションノートには、推奨の開始希釈率がありますが、適切な希釈率につきましてはご確認ください。

アプリケーション	Abreviews	特記事項
ICC/IF		Use a concentration of 20 µg/ml.
IHC-P		Use a concentration of 2.5 - 20 µg/ml.
WB		Use a concentration of 1 - 2 µg/ml. Predicted molecular weight: 70 kDa.

ターゲット情報

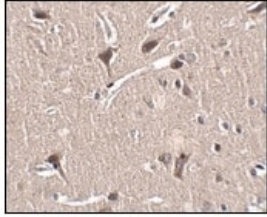
機能	May be involved in transcriptional regulation.
配列類似性	Belongs to the krueppel C2H2-type zinc-finger protein family. Contains 15 C2H2-type zinc fingers. Contains 1 KRAB domain.
細胞内局在	Nucleus.

画像



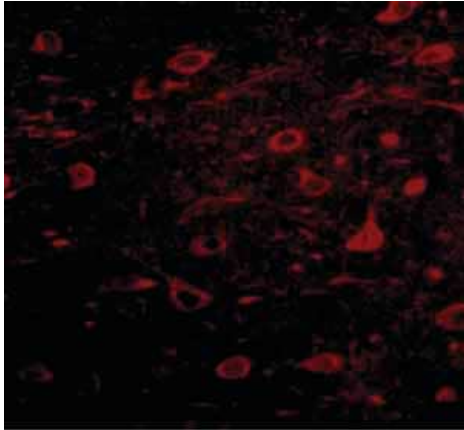
Anti-Mipu1 antibody (ab106432) at 1 µg/ml + Human heart tissue lysate

Predicted band size: 70 kDa



ab106432, at 2.5 µg/ml, staining Mipu1 in paraffin embedded Human brain tissue by Immunohistochemistry.

Immunohistochemistry (Formalin/PFA-fixed paraffin-embedded sections) - Anti-Mipu1 antibody (ab106432)



Immunohistochemical analysis of human brain tissue labelling Mipu1 with ab106432 at 20 ug/mL.

Immunocytochemistry/ Immunofluorescence - Anti-Mipu1 antibody (ab106432)

Please note: All products are "FOR RESEARCH USE ONLY. NOT FOR USE IN DIAGNOSTIC PROCEDURES"

Our Abpromise to you: Quality guaranteed and expert technical support

- Replacement or refund for products not performing as stated on the datasheet
- Valid for 12 months from date of delivery
- Response to your inquiry within 24 hours
- We provide support in Chinese, English, French, German, Japanese and Spanish
- Extensive multi-media technical resources to help you
- We investigate all quality concerns to ensure our products perform to the highest standards

If the product does not perform as described on this datasheet, we will offer a refund or replacement. For full details of the Abpromise, please visit <https://www.abcam.co.jp/abpromise> or contact our technical team.

Terms and conditions

- Guarantee only valid for products bought direct from Abcam or one of our authorized distributors