


Anti-Mimitin antibody [EP15279] - C-terminal ab192267

リコンビナント **RabMAb**

画像数 8

製品の概要

製品名	Anti-Mimitin antibody [EP15279] - C-terminal
製品の詳細	Rabbit monoclonal [EP15279] to Mimitin - C-terminal
由来種	Rabbit
アプリケーション	適用あり: ICC/IF, IP, WB, IHC-P
種交差性	交差種: Mouse, Human 交差が予測される動物種: Rat 
免疫原	Recombinant fragment. This information is proprietary to Abcam and/or its suppliers.
ポジティブ・コントロール	HepG2 cells and cell lysates: HeLa, SH-SY5Y and HEL cell lysates: Human fetal heart, Mouse kidney and Mouse heart lysates: Human liver and Mouse liver tissue.
特記事項	<p>This product is a recombinant monoclonal antibody, which offers several advantages including:</p> <ul style="list-style-type: none"> - High batch-to-batch consistency and reproducibility - Improved sensitivity and specificity - Long-term security of supply - Animal-free production <p>For more information see here.</p> <p>Our RabMAb[®] technology is a patented hybridoma-based technology for making rabbit monoclonal antibodies. For details on our patents, please refer to RabMAb[®] patents.</p>

製品の特性

製品の状態	Liquid
保存方法	Shipped at 4°C. Store at +4°C short term (1-2 weeks). Upon delivery aliquot. Store at -20°C long term. Avoid freeze / thaw cycle.
バッファー	<p>pH: 7.2</p> <p>Preservative: 0.01% Sodium azide</p> <p>Constituents: 40% Glycerol (glycerin, glycerine), 59% PBS, 0.05% BSA</p>
精製度	Protein A purified
ポリ/モノ	モノクローナル
クローン名	EP15279

アプリケーション

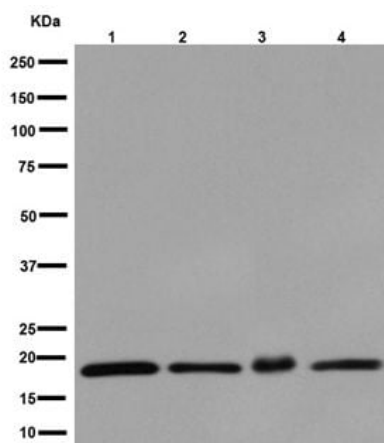
The Abpromise guarantee Abpromise保証は、 次のテスト済みアプリケーションにおけるab192267の使用に適用されます
アプリケーションノートには、推奨の開始希釈率がありますが、適切な希釈率につきましてはご検討ください。

アプリケーション	Abreviews	特記事項
ICC/IF		1/100.
IP		1/60.
WB		1/1000 - 1/10000. Detects a band of approximately 20 kDa (predicted molecular weight: 20 kDa).
IHC-P		1/100 - 1/200. Perform heat mediated antigen retrieval with Tris/EDTA buffer pH 9.0 before commencing with IHC staining protocol.

ターゲット情報

機能	Acts as a molecular chaperone for mitochondrial complex I assembly.
組織特異性	Highly expressed in ESCC cells. Also expressed in heart, skeletal muscle, liver, and in fibroblasts.
関連疾患	Defects in NDUFAF2 are a cause of mitochondrial complex I deficiency (MT-C1D) [MIM:252010]. A disorder of the mitochondrial respiratory chain that causes a wide range of clinical disorders, from lethal neonatal disease to adult-onset neurodegenerative disorders. Phenotypes include macrocephaly with progressive leukodystrophy, non-specific encephalopathy, cardiomyopathy, myopathy, liver disease, Leigh syndrome, Leber hereditary optic neuropathy, and some forms of Parkinson disease.
配列類似性	Belongs to the complex I NDUFA12 subunit family.
細胞内局在	Mitochondrion.

画像



Western blot - Anti-Mimitin antibody [EP15279] - C-terminal (ab192267)

All lanes : Anti-Mimitin antibody [EP15279] - C-terminal (ab192267) at 1/10000 dilution

Lane 1 : HepG2 cell lysate

Lane 2 : HeLa cell lysate

Lane 3 : SH-SY5Y cell lysate

Lane 4 : HEL cell lysate

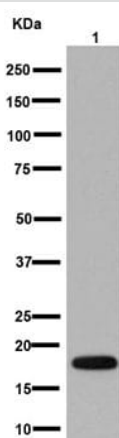
Lysates/proteins at 20 µg per lane.

Secondary

All lanes : Goat Anti-Rabbit IgG, (H+L), Peroxidase conjugated at 1/1000 dilution

Predicted band size: 20 kDa

Observed band size: 20 kDa



Western blot - Anti-Mimitin antibody [EP15279] - C-terminal (ab192267)

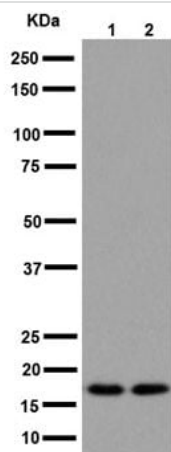
Anti-Mimitin antibody [EP15279] - C-terminal (ab192267) at 1/10000 dilution + Human fetal heart lysate at 10 µg

Secondary

Anti-Rabbit IgG (HRP), specific to the non-reduced form of IgG at 1/1000 dilution

Predicted band size: 20 kDa

Observed band size: 20 kDa



Western blot - Anti-Mimitin antibody [EP15279] - C-terminal (ab192267)

All lanes : Anti-Mimitin antibody [EP15279] - C-terminal (ab192267) at 1/1000 dilution

Lane 1 : Mouse heart tissue lysate

Lane 2 : Mouse kidney tissue lysate

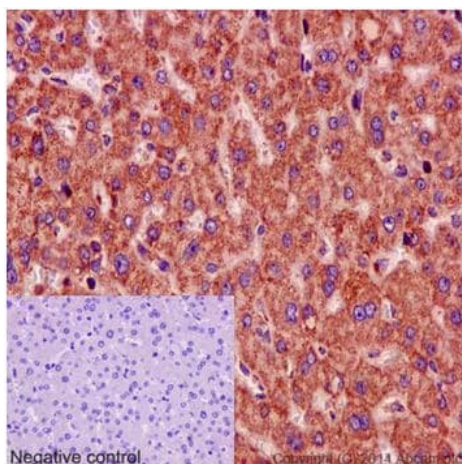
Lysates/proteins at 10 µg per lane.

Secondary

All lanes : Goat Anti-Rabbit IgG, (H+L), Peroxidase conjugated at 1/1000 dilution

Predicted band size: 20 kDa

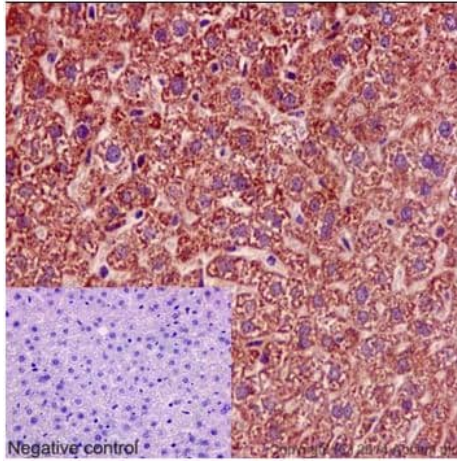
Observed band size: 20 kDa



Immunohistochemistry (Formalin/PFA-fixed paraffin-embedded sections) - Anti-Mimitin antibody [EP15279] - C-terminal (ab192267)

Immunohistochemical analysis of paraffin-embedded Human liver tissue labeling Mimitin with ab192267 at 1/200 dilution, followed by prediluted HRP Polymer for Rabbit/Mouse IgG. Counter stained with Hematoxylin. Negative control also shown.

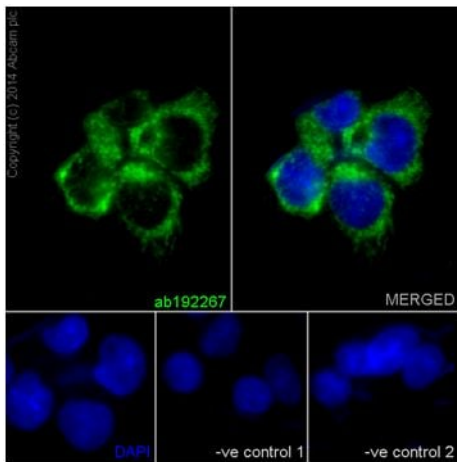
Perform heat mediated antigen retrieval with Tris/EDTA buffer pH 9.0 before commencing with IHC staining protocol.



Immunohistochemistry (Formalin/PFA-fixed paraffin-embedded sections) - Anti-Mimitin antibody [EP15279] - C-terminal (ab192267)

Immunohistochemical analysis of paraffin-embedded Mouse liver tissue labeling Mimitin with ab192267 at 1/200 dilution, followed by prediluted HRP Polymer for Rabbit/Mouse IgG. Counter stained with Hematoxylin. Negative control also shown.

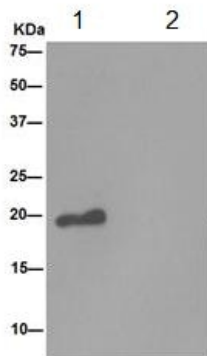
Perform heat mediated antigen retrieval with Tris/EDTA buffer pH 9.0 before commencing with IHC staining protocol.



Immunocytochemistry/ Immunofluorescence - Anti-Mimitin antibody [EP15279] - C-terminal (ab192267)

Immunofluorescent analysis of 4% paraformaldehyde-fixed HepG2 cells labeling Mimitin with ab192267 at 1/100 dilution. The cells were permeabilised with 0.1% Triton X-100. Goat anti-rabbit IgG (Alexa Fluor® 488) ([ab150077](#)) at 1/200 dilution was used as the secondary antibody (green). The nuclear counter stain is DAPI (blue).

Negative controls, ab192267 at 1/100 dilution followed by [ab150120](#) (AlexaFluor®594 Goat anti-Mouse secondary) at 1/500 dilution.



Immunoprecipitation - Anti-Mimitin antibody [EP15279] - C-terminal (ab192267)

Western blot analysis of Mimitin in immunoprecipitation pellets from MDA-MB-435 lysate. ab192267 used at 1/60 dilution (Lane 1) or PBS (Lane 2). Secondary antibody Anti-Rabbit IgG (HRP), specific to the non-reduced form of IgG at a 1/1000 dilution.

Why choose a recombinant antibody?



Research with confidence
Consistent and reproducible results



Long-term and scalable supply
Recombinant technology



Success from the first experiment
Confirmed specificity



Ethical standards compliant
Animal-free production

Anti-Mimitin antibody [EP15279] - C-terminal
(ab192267)

Please note: All products are "FOR RESEARCH USE ONLY. NOT FOR USE IN DIAGNOSTIC PROCEDURES"

Our Abpromise to you: Quality guaranteed and expert technical support

- Replacement or refund for products not performing as stated on the datasheet
- Valid for 12 months from date of delivery
- Response to your inquiry within 24 hours
- We provide support in Chinese, English, French, German, Japanese and Spanish
- Extensive multi-media technical resources to help you
- We investigate all quality concerns to ensure our products perform to the highest standards

If the product does not perform as described on this datasheet, we will offer a refund or replacement. For full details of the Abpromise, please visit <https://www.abcam.co.jp/abpromise> or contact our technical team.

Terms and conditions

- Guarantee only valid for products bought direct from Abcam or one of our authorized distributors