

Anti-Mimitin antibody ab91521

★★★★★ **1 Abreviews** [画像数 1](#)

製品の概要

製品名	Anti-Mimitin antibody
製品の詳細	Rabbit polyclonal to Mimitin
由来種	Rabbit
アプリケーション	適用あり: WB
種交差性	交差種: Human
免疫原	A 14 amino acid synthetic peptide from near the carboxy terminus of Human Mimitin (NP_777549).
特記事項	<p>The Life Science industry has been in the grips of a reproducibility crisis for a number of years. Abcam is leading the way in addressing this with our range of recombinant monoclonal antibodies and knockout edited cell lines for gold-standard validation. Please check that this product meets your needs before purchasing.</p> <p>If you have any questions, special requirements or concerns, please send us an inquiry and/or contact our Support team ahead of purchase. Recommended alternatives for this product can be found below, along with publications, customer reviews and Q&As</p>

製品の特性

製品の状態	Liquid
保存方法	Shipped at 4°C. Store at +4°C.
バッファー	pH: 7.2 Preservative: 0.02% Sodium azide Constituent: PBS
精製度	Immunogen affinity purified
ポリ/モノ	ポリクローナル
アイソタイプ	IgG

アプリケーション

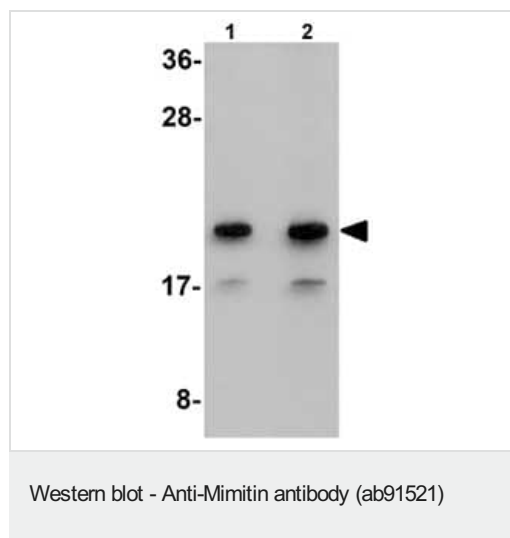
The Abpromise guarantee **Abpromise保証は、** 次のテスト済みアプリケーションにおけるab91521の使用に適用されます
アプリケーションノートには、推奨の開始希釈率がありますが、適切な希釈率につきましてはご検討ください。

アプリケーション	Abreviews	特記事項
WB	★★★★★ (1)	Use a concentration of 1 - 2 µg/ml. Predicted molecular weight: 20 kDa.

ターゲット情報

機能	Acts as a molecular chaperone for mitochondrial complex I assembly.
組織特異性	Highly expressed in ESCC cells. Also expressed in heart, skeletal muscle, liver, and in fibroblasts.
関連疾患	Defects in NDUFAF2 are a cause of mitochondrial complex I deficiency (MT-C1D) [MIM:252010]. A disorder of the mitochondrial respiratory chain that causes a wide range of clinical disorders, from lethal neonatal disease to adult-onset neurodegenerative disorders. Phenotypes include macrocephaly with progressive leukodystrophy, non-specific encephalopathy, cardiomyopathy, myopathy, liver disease, Leigh syndrome, Leber hereditary optic neuropathy, and some forms of Parkinson disease.
配列類似性	Belongs to the complex I NDUFA12 subunit family.
細胞内局在	Mitochondrion.

画像



Lane 1 : Anti-Mimitin antibody (ab91521) at 1 µg/ml

Lane 2 : Anti-Mimitin antibody (ab91521) at 2 µg/ml

All lanes : Raji cell lysate

Lysates/proteins at 15 µg per lane.

Predicted band size: 20 kDa

Please note: All products are "FOR RESEARCH USE ONLY. NOT FOR USE IN DIAGNOSTIC PROCEDURES"

Our Abpromise to you: Quality guaranteed and expert technical support

- Replacement or refund for products not performing as stated on the datasheet
- Valid for 12 months from date of delivery
- Response to your inquiry within 24 hours
- We provide support in Chinese, English, French, German, Japanese and Spanish
- Extensive multi-media technical resources to help you

- We investigate all quality concerns to ensure our products perform to the highest standards

If the product does not perform as described on this datasheet, we will offer a refund or replacement. For full details of the Abpromise, please visit <https://www.abcam.co.jp/abpromise> or contact our technical team.

Terms and conditions

- Guarantee only valid for products bought direct from Abcam or one of our authorized distributors