


# Anti-MID1 antibody ab70770

**8 References**   **画像数 3**

### 製品の概要

製品名	Anti-MID1 antibody
製品の詳細	Rabbit polyclonal to MID1
由来種	Rabbit
アプリケーション	<b>適用あり:</b> ELISA, WB, IHC-P, ICC/IF
種交差性	<b>交差種:</b> Mouse, Human <b>交差が予測される動物種:</b> Rat 
免疫原	Synthetic peptide derived from an internal sequence of human MID1
特記事項	<p>The Life Science industry has been in the grips of a reproducibility crisis for a number of years. Abcam is leading the way in addressing this with our range of recombinant monoclonal antibodies and knockout edited cell lines for gold-standard validation. Please check that this product meets your needs before purchasing.</p> <p>If you have any questions, special requirements or concerns, please send us an inquiry and/or contact our Support team ahead of purchase. Recommended alternatives for this product can be found below, along with publications, customer reviews and Q&amp;As</p>

### 製品の特性

製品の状態	Liquid
保存方法	Shipped at 4°C. Upon delivery aliquot and store at -20°C. Avoid freeze / thaw cycles.
バッファー	<p>pH: 7.40</p> <p>Preservative: 0.02% Sodium azide</p> <p>Constituents: 50% Glycerol (glycerin, glycerine), 0.87% Sodium chloride, PBS</p> <p>Without Mg2+ and Ca2+</p>
精製度	Immunogen affinity purified
特記事項 (精製)	ab70770 was affinity-purified from rabbit antiserum by affinity-chromatography using epitope-specific immunogen.
ポリ/モノ	ポリクローナル
アイソタイプ	IgG

## アプリケーション

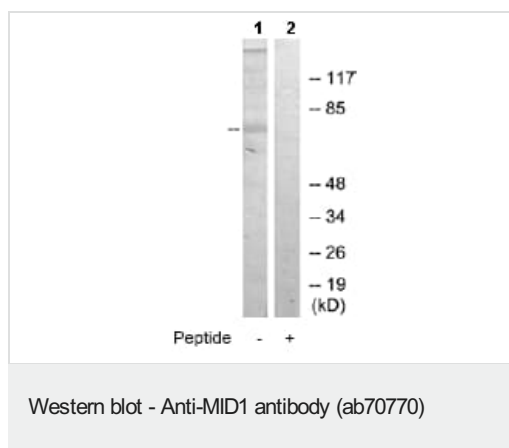
The Abpromise guarantee Abpromise保証は、次のテスト済みアプリケーションにおけるab70770の使用に適用されます  
アプリケーションノートには、推奨の開始希釈率がありますが、適切な希釈率につきましてはご確認ください。

アプリケーション	Abreviews	特記事項
ELISA		Use at an assay dependent concentration.
WB		1/500 - 1/1000. Detects a band of approximately 75 kDa (predicted molecular weight: 75 kDa).
IHC-P		Use at an assay dependent concentration.
ICC/IF		1/500 - 1/1000.

## ターゲット情報

機能	May have E3 ubiquitin ligase activity which targets the catalytic subunit of protein phosphatase 2 for degradation.
組織特異性	In the fetus, highest expression found in kidney, followed by brain and lung. Expressed at low levels in fetal liver. In the adult, most abundant in heart, placenta and brain.
関連疾患	Defects in MID1 are the cause of Opitz syndrome type I (OS-I) [MIM:300000]. OS-I is an X-linked recessive disorder characterized by hypertelorism, genital-urinary defects such as hypospadias in males and splayed labia in females, lip-palate-laryngotracheal clefts, imperforate anus, developmental delay and congenital heart defects. OS-I mutations produce proteins with a decreased affinity for microtubules.
配列類似性	Belongs to the TRIM/RBCC family. Contains 2 B box-type zinc fingers. Contains 1 B30.2/SPRY domain. Contains 1 COS domain. Contains 1 fibronectin type-III domain. Contains 1 RING-type zinc finger.
翻訳後修飾	Phosphorylated on serine and threonine residues.
細胞内局在	Cytoplasm. Cytoplasm > cytoskeleton. Cytoplasm > cytoskeleton > spindle. Microtubule-associated. It is associated with microtubules throughout the cell cycle, co-localizing with cytoplasmic fibers in interphase and with the mitotic spindle and midbodies during mitosis and cytokinesis.

## 画像



**All lanes :** Anti-MID1 antibody (ab70770) at 1/500 dilution

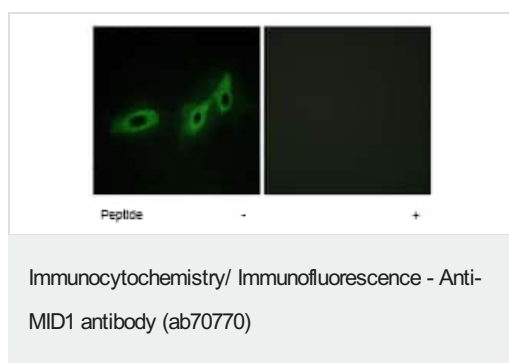
**Lane 1 :** 293 extract

**Lane 2 :** 293 extract with immunising peptide at 10 µg

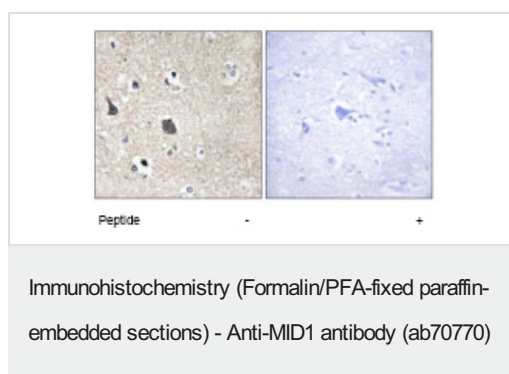
Lysates/proteins at 30 µg per lane.

**Predicted band size:** 75 kDa

**Observed band size:** 75 kDa



ab70770 at 1/500 dilution staining MID1 in HeLa cells by Immunofluorescence, in the absence or presence of the immunising peptide.



ab70770 at 1/50 dilution staining MID1 in human brain by Immunohistochemistry, Paraffin-embedded tissue, in the absence or presence of the immunising peptide.

**Please note:** All products are "FOR RESEARCH USE ONLY. NOT FOR USE IN DIAGNOSTIC PROCEDURES"

## Our Abpromise to you: Quality guaranteed and expert technical support

- Replacement or refund for products not performing as stated on the datasheet
- Valid for 12 months from date of delivery
- Response to your inquiry within 24 hours
- We provide support in Chinese, English, French, German, Japanese and Spanish

- Extensive multi-media technical resources to help you
- We investigate all quality concerns to ensure our products perform to the highest standards

If the product does not perform as described on this datasheet, we will offer a refund or replacement. For full details of the Abpromise, please visit <https://www.abcam.co.jp/abpromise> or contact our technical team.

#### **Terms and conditions**

---

- Guarantee only valid for products bought direct from Abcam or one of our authorized distributors