



Anti-mGluR1 antibody ab82211

★★★★★ [14 Abreviews](#) [16 References](#) [画像数 2](#)

製品の概要

製品名	Anti-mGluR1 antibody
製品の詳細	Rabbit polyclonal to mGluR1
由来種	Rabbit
アプリケーション	適用あり: WB, ICC/IF
種交差性	交差種: Rat, Human
免疫原	Synthetic peptide corresponding to Human mGluR1 aa 1159-1171. Sequence: SSVPSSPVSESVL Database link: Q13255 <div>  Run BLAST with  Run BLAST with </div>
ポジティブ・コントロール	WB: Human brain lysate. ICC/IF: Rat brain (cingulate cortex).
特記事項	<p>The Life Science industry has been in the grips of a reproducibility crisis for a number of years. Abcam is leading the way in addressing this with our range of recombinant monoclonal antibodies and knockout edited cell lines for gold-standard validation. Please check that this product meets your needs before purchasing.</p> <p>If you have any questions, special requirements or concerns, please send us an inquiry and/or contact our Support team ahead of purchase. Recommended alternatives for this product can be found below, along with publications, customer reviews and Q&As</p>

製品の特性

製品の状態	Liquid
保存方法	Shipped at 4°C. Upon delivery aliquot and store at -20°C. Avoid freeze / thaw cycles.
バッファー	Preservative: 0.02% Sodium azide Constituent: PBS
精製度	Immunogen affinity purified
ポリ/モノ	ポリクローナル
アイソタイプ	IgG

アプリケーション

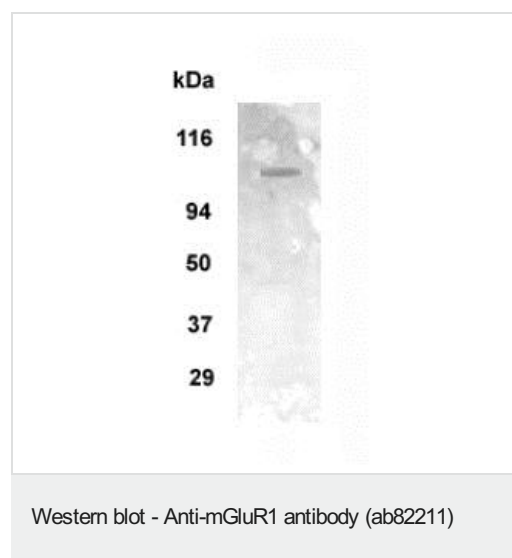
The Abpromise guarantee Abpromise保証は、 次のテスト済みアプリケーションにおけるab82211の使用に適用されます
アプリケーションノートには、推奨の開始希釈率がありますが、適切な希釈率につきましてはご確認ください。

アプリケーション	Abreviews	特記事項
WB		1/500 - 1/1000. Detects a band of approximately 110 kDa (predicted molecular weight: 133 kDa).
ICC/IF		1/100 - 1/500.

ターゲット情報

機能	Receptor for glutamate. The activity of this receptor is mediated by a G-protein that activates a phosphatidylinositol-calcium second messenger system. May participate in the central action of glutamate in the CNS, such as long-term potentiation in the hippocampus and long-term depression in the cerebellum.
配列類似性	Belongs to the G-protein coupled receptor 3 family.
細胞内局在	Cell membrane.

画像



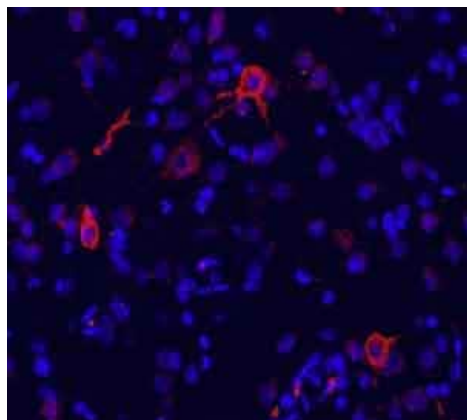
Anti-mGluR1 antibody (ab82211) at 1/1000 dilution + human brain lysate at 20 µg

Secondary

AP-conjugated secondary at 1/5000 dilution

Predicted band size: 133 kDa

Observed band size: 110 kDa



Immunocytochemistry/ Immunofluorescence - Anti-mGluR1 antibody (ab82211)

Immunofluorescence labeling of mGluR1 in rat brain (cingulate cortex). Using ab82211 (red color). DAPI was used to counter-stain cell nuclei (blue color). Working dilution is 1/100-1/500.

Please note: All products are "FOR RESEARCH USE ONLY. NOT FOR USE IN DIAGNOSTIC PROCEDURES"

Our Abpromise to you: Quality guaranteed and expert technical support

- Replacement or refund for products not performing as stated on the datasheet
- Valid for 12 months from date of delivery
- Response to your inquiry within 24 hours
- We provide support in Chinese, English, French, German, Japanese and Spanish
- Extensive multi-media technical resources to help you
- We investigate all quality concerns to ensure our products perform to the highest standards

If the product does not perform as described on this datasheet, we will offer a refund or replacement. For full details of the Abpromise, please visit <https://www.abcam.co.jp/abpromise> or contact our technical team.

Terms and conditions

- Guarantee only valid for products bought direct from Abcam or one of our authorized distributors