


### Anti-MGEA5/OGA antibody ab105217

KO 評価済

[3 References](#) [画像数 3](#)

#### 製品の概要

製品名	Anti-MGEA5/OGA antibody
製品の詳細	Rabbit polyclonal to MGEA5/OGA
由来種	Rabbit
特異性	From Jan 2024, QC testing of replenishment batches of this polyclonal changed. All tested and expected application and reactive species combinations are still covered by our Abcam product promise. However, we no longer test all applications. For more information on a specific batch, please contact our Scientific Support who will be happy to help.
アプリケーション	適用あり: WB, ICC/IF
種交差性	交差種: Human 交差が予測される動物種: Mouse, Rabbit, Horse, Cow, Dog, Pig, Macaque monkey, Gorilla 
免疫原	Synthetic peptide. This information is proprietary to Abcam and/or its suppliers.
ポジティブ・コントロール	This antibody gave a positive signal in the following whole cell lysates: U87mg; JEG3; PDX1. ICC/IF: SKNSH cells.
特記事項	<p>The Life Science industry has been in the grips of a reproducibility crisis for a number of years. Abcam is leading the way in addressing this with our range of recombinant monoclonal antibodies and knockout edited cell lines for gold-standard validation. Please check that this product meets your needs before purchasing.</p> <p>If you have any questions, special requirements or concerns, please send us an inquiry and/or contact our Support team ahead of purchase. Recommended alternatives for this product can be found below, along with publications, customer reviews and Q&amp;As</p>

#### 製品の特性

製品の状態	Liquid
保存方法	Shipped at 4°C. Store at +4°C short term (1-2 weeks). Upon delivery aliquot. Store at -20°C or -80°C. Avoid freeze / thaw cycle.
バッファー	pH: 7.40 Preservative: 0.02% Sodium azide Constituent: PBS

Batches of this product that have a concentration < 1mg/ml may have BSA added as a stabilising agent. If you would like information about the formulation of a specific lot, please contact our scientific support team who will be happy to help.

精製度	Immunogen affinity purified
ポリ/モノ	ポリクローナル
アイソタイプ	IgG

#### アプリケーション

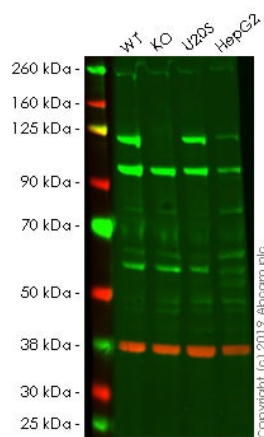
**The Abpromise guarantee**      **Abpromise保証は、次のテスト済みアプリケーションにおけるab105217の使用に適用されます**  
アプリケーションノートには、推奨の開始希釈率がありますが、適切な希釈率につきましてはご検討ください。

アプリケーション	Abreviews	特記事項
WB		Use a concentration of 1 µg/ml. Detects a band of approximately 120 kDa (predicted molecular weight: 103 kDa).
ICC/IF		Use a concentration of 1 µg/ml.

#### ターゲット情報

機能	Isoform 1: Cleaves GlcNAc but not GalNAc from O-glycosylated proteins. Can use p-nitrophenyl-beta-GlcNAc and 4-methylumbelliferone-GlcNAc as substrates but not p-nitrophenyl-beta-GalNAc or p-nitrophenyl-alpha-GlcNAc (in vitro) (PubMed:11148210). Does not bind acetyl-CoA and does not have histone acetyltransferase activity (PubMed:24088714). Isoform 3: Cleaves GlcNAc but not GalNAc from O-glycosylated proteins. Can use p-nitrophenyl-beta-GlcNAc as substrate but not p-nitrophenyl-beta-GalNAc or p-nitrophenyl-alpha-GlcNAc (in vitro), but has about six times lower specific activity than isoform 1.
組織特異性	Ubiquitous. Shows highest expression in the brain, placenta and pancreas.
配列類似性	Belongs to the glycosyl hydrolase 84 family.
翻訳後修飾	Proteolytically cleaved by caspase-3 during apoptosis. The fragments interact with each other; cleavage does not decrease enzyme activity.
細胞内局在	Cytoplasm and Nucleus.

#### 画像



Western blot - Anti-MGEA5/OGA antibody  
(ab105217)

**All lanes :** Anti-MGEA5/OGA antibody (ab105217) at 1  $\mu$ g

**Lane 1 :** Wild-type HAP1 whole cell lysate

**Lane 2 :** MGEA5 knockout HAP1 whole cell lysate

**Lane 3 :** U2OS whole cell lysate

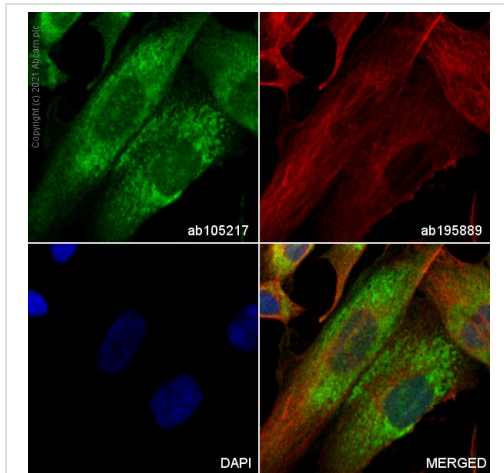
**Lane 4 :** HepG2 whole cell lysate

Lysates/proteins at 20  $\mu$ g per lane.

**Predicted band size:** 103 kDa

**Lanes 1 - 4:** Merged signal (red and green). Green - ab105217 observed at 120 kDa. Red - loading control, **ab8245**, observed at 37 kDa.

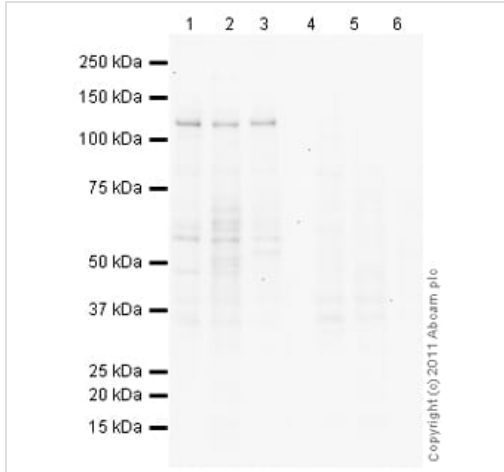
ab105217 was shown to recognize in wild-type HAP1 cells as signal was lost at the expected MW in MGEA5 knockout cells. Additional cross-reactive bands were observed in the wild-type and knockout cells. Wild-type and MGEA5 knockout samples were subjected to SDS-PAGE. The membrane was blocked with 3% NF Milk. Ab105217 and **ab8245** (Mouse anti-GAPDH loading control) were incubated overnight at 4°C at 1  $\mu$ g/ml and 1/20000 dilution respectively. Blots were developed with Goat anti-Rabbit IgG H&L (IRDye® 800CW) preabsorbed **ab216773** and Goat anti-Mouse IgG H&L (IRDye® 680RD) preabsorbed **ab216776** secondary antibodies at 1/20000 dilution for 1 hour at room temperature before imaging.



Immunocytochemistry/ Immunofluorescence - Anti-MGEA5/OGA antibody (ab105217)

ab105217 staining MGEA5 in SKNSH cells. The cells were fixed with 4% PFA (10min), permeabilized with 0.1% Triton X-100 for 5 minutes and then blocked with 1% BSA/10% normal goat serum/0.3M glycine in 0.1% PBS-Tween for 1h. The cells were then incubated overnight at +4°C with ab105217 at 1/900 dilution and **ab195889**, Mouse monoclonal to alpha Tubulin (Alexa Fluor® 594), at 1/250 dilution (shown in red). The secondary antibody (shown in green) was **ab150081** Alexa Fluor® 488 Goat anti-Rabbit IgG (H+L) used at a 1/1000 dilution for 1h. Nuclear DNA was labelled with DAPI (shown in blue).

Image was taken with a confocal microscope (Leica-Microsystems, TCS SP8).



Western blot - Anti-MGEA5/OGA antibody (ab105217)

**All lanes** : Anti-MGEA5/OGA antibody (ab105217) at 1 µg/ml

**Lane 1** : U-87 MG (Human glioblastoma astrocytoma) Whole Cell Lysate

**Lane 2** : JEG-3 (Human placental choriocarcinoma cell line) Whole Cell Lysate

**Lane 3** : PDX1(Pancreatic and duodenal homeobox 1) Whole Cell Lysate

**Lane 4** : U-87 MG (Human glioblastoma astrocytoma) Whole Cell Lysate with Immunising peptide at 1 µg/ml

**Lane 5** : JEG-3 (Human placental choriocarcinoma cell line) Whole Cell Lysate with Immunising peptide at 1 µg/ml

**Lane 6** : PDX1(Pancreatic and duodenal homeobox 1) Whole Cell Lysate with Immunising peptide at 1 µg/ml

Lysates/proteins at 10 µg per lane.

### Secondary

**All lanes** : Goat Anti-Rabbit IgG H&L (HRP) preadsorbed (**ab97080**) at 1/5000 dilution

Developed using the ECL technique.

Performed under reducing conditions.

**Predicted band size:** 103 kDa

**Observed band size:** 120 kDa

**Additional bands at:** 58 kDa. We are unsure as to the identity of these extra bands.

**Exposure time:** 4 minutes

**Please note:** All products are "FOR RESEARCH USE ONLY. NOT FOR USE IN DIAGNOSTIC PROCEDURES"

### **Our Abpromise to you: Quality guaranteed and expert technical support**

---

- Replacement or refund for products not performing as stated on the datasheet
- Valid for 12 months from date of delivery
- Response to your inquiry within 24 hours
- We provide support in Chinese, English, French, German, Japanese and Spanish
- Extensive multi-media technical resources to help you
- We investigate all quality concerns to ensure our products perform to the highest standards

If the product does not perform as described on this datasheet, we will offer a refund or replacement. For full details of the Abpromise, please visit <https://www.abcam.co.jp/abpromise> or contact our technical team.

### **Terms and conditions**

---

- Guarantee only valid for products bought direct from Abcam or one of our authorized distributors