

Anti-METTL8 antibody ab122273

2 References [画像数 3](#)

製品の概要

製品名	Anti-METTL8 antibody
製品の詳細	Rabbit polyclonal to METTL8
由来種	Rabbit
アプリケーション	適用あり: WB, ICC/IF, IHC-P
種交差性	交差種: Human
免疫原	antigen sequence, corresponding to amino acids 1-77 (MNMWRNSIS CLRLGKVPHR YQSGYHPVAP LGSRLTDPV KVFENMWDH MQWSKEEEAA ARKKVKENSA VRVLEE) of Human METTL8. Run BLAST with Expasy Run BLAST with NCBI
ポジティブ・コントロール	IHC: Human stomach tissue. ICC/IF: Human cell line A-431 WB: Human cell line HepG2
特記事項	<p>The Life Science industry has been in the grips of a reproducibility crisis for a number of years. Abcam is leading the way in addressing this with our range of recombinant monoclonal antibodies and knockout edited cell lines for gold-standard validation. Please check that this product meets your needs before purchasing.</p> <p>If you have any questions, special requirements or concerns, please send us an inquiry and/or contact our Support team ahead of purchase. Recommended alternatives for this product can be found below, along with publications, customer reviews and Q&As</p>

製品の特性

製品の状態	Liquid
保存方法	Shipped at 4°C. Upon delivery aliquot and store at -20°C. Avoid freeze / thaw cycles.
バッファー	pH: 7.20 Preservative: 0.02% Sodium azide Constituents: 40% Glycerol (glycerin, glycerine), 59% PBS
精製度	Immunogen affinity purified
ポリクローナル	ポリクローナル
アイソタイプ	IgG

アプリケーション

The Abpromise guarantee

Abpromise保証は、次のテスト済みアプリケーションにおけるab122273の使用に適用されます

アプリケーションノートには、推奨の開始希釈率がありますが、適切な希釈率につきましてはご検討ください。

アプリケーション	Abreviews	特記事項
WB		Use a concentration of 0.04 - 0.4 µg/ml. Predicted molecular weight: 33 kDa.
ICC/IF		Use a concentration of 1 - 4 µg/ml. Recommend PFA Fixation and Triton X-100 treatment
IHC-P		1/200 - 1/500. Perform heat mediated antigen retrieval with citrate buffer pH 6 before commencing with IHC staining protocol.

ターゲット情報

機能

Probable methyltransferase.

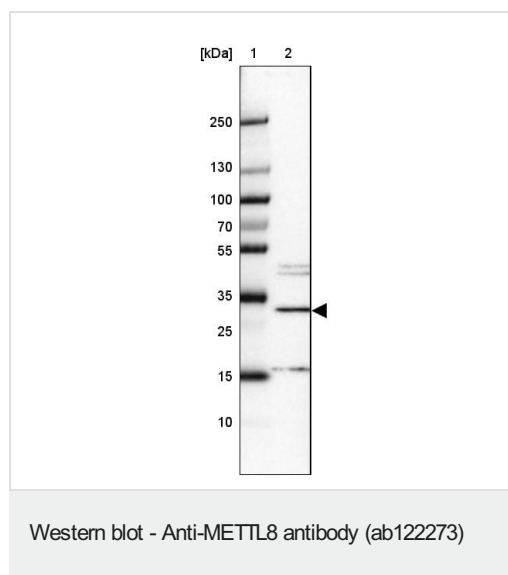
配列類似性

Belongs to the methyltransferase superfamily. METL family.

細胞内局在

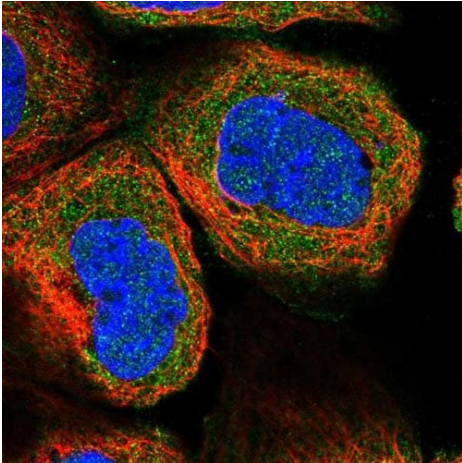
Cytoplasm. Nucleus.

画像



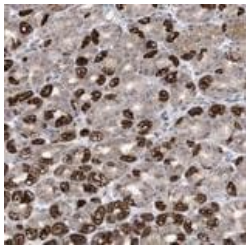
Anti-METTL8 antibody (ab122273) at 0.4 µg/ml + Human cell line
HepG2

Predicted band size: 33 kDa



Immunocytochemistry/ Immunofluorescence - Anti-METTL8 antibody (ab122273)

Immunofluorescent staining of Human cell line A-431 shows positivity in cytoplasm. Recommended concentration of ab122273 1-4 µg/ml. Cells treated with PFA/Triton X-100.



Immunohistochemistry (Formalin/PFA-fixed paraffin-embedded sections) - Anti-METTL8 antibody (ab122273)

ab122273, at 1/15 dilution, staining METTL8 in Paraffin-embedded Human stomach tissue by Immunohistochemistry.

Please note: All products are "FOR RESEARCH USE ONLY. NOT FOR USE IN DIAGNOSTIC PROCEDURES"

Our Abpromise to you: Quality guaranteed and expert technical support

- Replacement or refund for products not performing as stated on the datasheet
- Valid for 12 months from date of delivery
- Response to your inquiry within 24 hours
- We provide support in Chinese, English, French, German, Japanese and Spanish
- Extensive multi-media technical resources to help you

- We investigate all quality concerns to ensure our products perform to the highest standards

If the product does not perform as described on this datasheet, we will offer a refund or replacement. For full details of the Abpromise, please visit <https://www.abcam.co.jp/abpromise> or contact our technical team.

Terms and conditions

- Guarantee only valid for products bought direct from Abcam or one of our authorized distributors