

Anti-Methylated Lysine (di methyl , mono methyl) antibody ab23366

★★★★☆ **8 Abreviews** **45 References** 画像数 3

製品の概要

製品名	Anti-Methylated Lysine (di methyl , mono methyl) antibody
製品の詳細	Rabbit polyclonal to Methylated Lysine (di methyl , mono methyl)
由来種	Rabbit
特異性	Recognize proteins methylated on lysine residues (mono- & di-methyl lysine). This antibody was affinity purified with mono-methyl lysine and di-methyl lysine, and may also react with tri-methyl lysine. Does not cross-react with acetylated protein.
アプリケーション	適用あり: IHC-P, WB, ELISA
種交差性	交差種: Species independent
免疫原	Methylated Lysine conjugated to KLH.
ポジティブ・コントロール	HCL (0.1N) extracted and acetone precipitated histone fraction
特記事項	<p>The Life Science industry has been in the grips of a reproducibility crisis for a number of years. Abcam is leading the way in addressing this with our range of recombinant monoclonal antibodies and knockout edited cell lines for gold-standard validation. Please check that this product meets your needs before purchasing.</p> <p>If you have any questions, special requirements or concerns, please send us an inquiry and/or contact our Support team ahead of purchase. Recommended alternatives for this product can be found below, along with publications, customer reviews and Q&As</p>

製品の特性

製品の状態	Liquid
保存方法	Shipped at 4°C. Upon delivery aliquot and store at -20°C or -80°C. Avoid repeated freeze / thaw cycles.
バッファー	pH: 6.00 Constituents: PBS, 50% Glycerol
精製度	Immunogen affinity purified
特記事項 (精製)	Affinity purified using N-methyl (epsilon amino group)lysine on Agarose as affinity matrix.
ポリ/モノ	ポリクローナル
アイソタイプ	IgG

アプリケーション

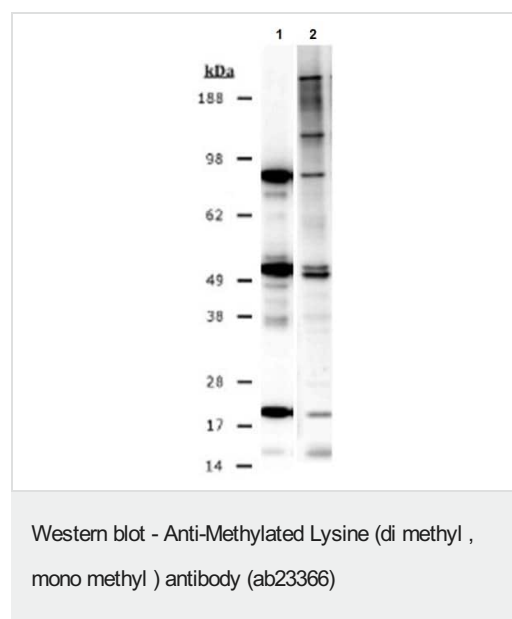
The Abpromise guarantee **Abpromise保証は、次のテスト済みアプリケーションにおけるab23366の使用に適用されます**
アプリケーションノートには、推奨の開始希釈率がありますが、適切な希釈率につきましてはご確認ください。

アプリケーション	Abreviews	特記事項
IHC-P	★★★★★ (3)	Use at an assay dependent concentration.
WB	★★★★★ (2)	Use a concentration of 0.5 - 1 µg/ml. Do not use milk for any of the buffers as complex milk proteins may contain competitive methylated proteins. Use BSA instead. ab23366 incubation time 2h RT. If no or weak signal is obtained overnight at 4deg might help.
ELISA		Use at an assay dependent concentration.

ターゲット情報

関連性 Many proteins are post translationally modified. Modifications such as phosphorylation, glycosylation, ubiquitination and methylation have been shown to play an important role in the development, physiology and disease of animals and plants. Histone lysine methylation is regarded as a very stable modification with important functions in epigenetic gene control and for organizing chromatin domains.

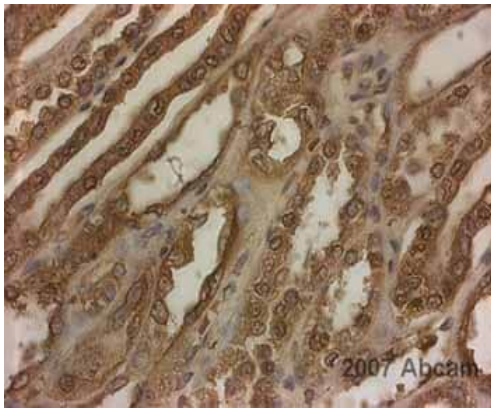
画像



Lane 1 : Anti-Methylated Lysine (tri methyl) antibody (does not cross react with mono, or di methyl lysine residues)

Lane 2 : Anti-Methylated Lysine (di methyl , mono methyl) antibody (ab23366)

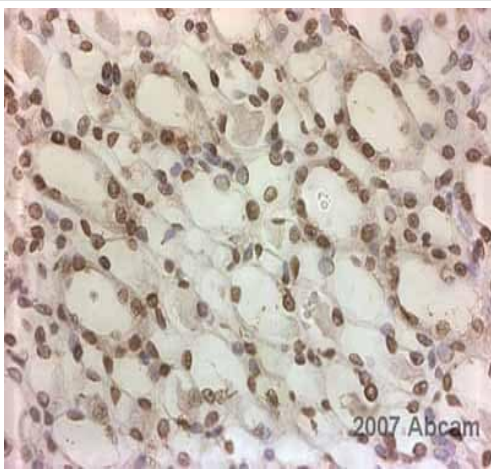
All lanes : Yeast extract



Immunohistochemistry (Formalin/PFA-fixed paraffin-embedded sections) - Anti-Methylated Lysine (di methyl , mono methyl) antibody (ab23366)

This image is courtesy of an anonymous Abreview

ab23366 at 1/200 staining human kidney tissue sections by IHC-P. The tissue was formaldehyde fixed a heat mediated antigen retrieval step was performed in citrate buffer. An HRP conjugated goat anti-rabbit antibody was used as the secondary.



Immunohistochemistry (Formalin/PFA-fixed paraffin-embedded sections) - Anti-Methylated Lysine (di methyl , mono methyl) antibody (ab23366)

This image is courtesy of an anonymous Abreview

ab23366 staining formalin fixed paraffin-embedded rat kidney tissue sections. The section was subjected to heat mediated antigen retrieval in citrate buffer (pH 6.0) and blocked with 5% serum for 30 minutes at 20°C, prior to incubation with the primary antibody (diluted 1/200 in PBS + 5% serum) for 45 mintes at 20°C. An HRP-conjugated goat anti-rabbit antibody was used as the secondary.

Please note: All products are "FOR RESEARCH USE ONLY. NOT FOR USE IN DIAGNOSTIC PROCEDURES"

Our Abpromise to you: Quality guaranteed and expert technical support

- Replacement or refund for products not performing as stated on the datasheet
- Valid for 12 months from date of delivery
- Response to your inquiry within 24 hours
- We provide support in Chinese, English, French, German, Japanese and Spanish
- Extensive multi-media technical resources to help you

- We investigate all quality concerns to ensure our products perform to the highest standards

If the product does not perform as described on this datasheet, we will offer a refund or replacement. For full details of the Abpromise, please visit <https://www.abcam.co.jp/abpromise> or contact our technical team.

Terms and conditions

- Guarantee only valid for products bought direct from Abcam or one of our authorized distributors