


Anti-Metabotropic Glutamate Receptor 5 antibody ab27190

★★★★★ [1 Abreviews](#) [8 References](#) [画像数 1](#)

製品の概要

| | |
|--------------|--|
| 製品名 | Anti-Metabotropic Glutamate Receptor 5 antibody |
| 製品の詳細 | Rabbit polyclonal to Metabotropic Glutamate Receptor 5 |
| 由来種 | Rabbit |
| アプリケーション | 適用あり: IHC-P 適用なし: ICC |
| 種交差性 | 交差種: Human 交差が予測される動物種: Rabbit  |
| 免疫原 | Synthetic peptide within Human Metabotropic Glutamate Receptor 5 aa 1150 to the C-terminus. The exact sequence is proprietary. Database link: P41594 |
| ポジティブ・コントロール | IHC: human brain tissue. |
| 特記事項 | This product is FOR RESEARCH USE ONLY. For commercial use, please contact partnerships@abcam.com. The Life Science industry has been in the grips of a reproducibility crisis for a number of years. Abcam is leading the way in addressing this with our range of recombinant monoclonal antibodies and knockout edited cell lines for gold-standard validation. Please check that this product meets your needs before purchasing. If you have any questions, special requirements or concerns, please send us an inquiry and/or contact our Support team ahead of purchase. Recommended alternatives for this product can be found below, along with publications, customer reviews and Q&As |

製品の特性

| | |
|-----------|---|
| 製品の状態 | Liquid |
| 保存方法 | Shipped at 4°C. Upon delivery aliquot and store at -20°C. Avoid freeze / thaw cycles. |
| バッファー | pH: 7.60 Preservative: 0.1% Sodium azide Constituents: PBS, 1% BSA |
| 精製度 | Immunogen affinity purified |
| 特記事項 (精製) | This antibody is an affinity purified IgG. |

ポリ/モノ
アイソタイプ

ポリクローナル
IgG

アプリケーション

The Abpromise guarantee **Abpromise保証は、** 次のテスト済みアプリケーションにおけるab27190の使用に適用されます
アプリケーションノートには、推奨の開始希釈率がありますが、適切な希釈率につきましてはご検討ください。

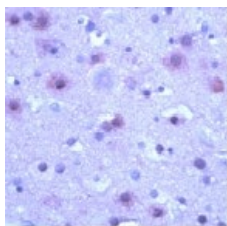
| アプリケーション | Abreviews | 特記事項 |
|----------|-----------|---|
| IHC-P | | 1/50. Perform heat mediated antigen retrieval before commencing with IHC staining protocol. |

追加情報 Is unsuitable for ICC.

ターゲット情報

| | |
|-------|--|
| 機能 | G-protein coupled receptor for glutamate. Ligand binding causes a conformation change that triggers signaling via guanine nucleotide-binding proteins (G proteins) and modulates the activity of down-stream effectors. Signaling activates a phosphatidylinositol-calcium second messenger system and generates a calcium-activated chloride current. Plays an important role in the regulation of synaptic plasticity and the modulation of the neural network activity. |
| 配列類似性 | Belongs to the G-protein coupled receptor 3 family. |
| 細胞内局在 | Cell membrane. |

画像



Ab27190, at a dilution of 1/50, staining mGluR5 in Paraffin embedded formalin fixed human brain tissue section.

Immunohistochemistry (Formalin/PFA-fixed paraffin-embedded sections) - Anti-Metabotropic Glutamate Receptor 5 antibody (ab27190)

Please note: All products are "FOR RESEARCH USE ONLY. NOT FOR USE IN DIAGNOSTIC PROCEDURES"

Our Abpromise to you: Quality guaranteed and expert technical support

- Replacement or refund for products not performing as stated on the datasheet
- Valid for 12 months from date of delivery

- Response to your inquiry within 24 hours
- We provide support in Chinese, English, French, German, Japanese and Spanish
- Extensive multi-media technical resources to help you
- We investigate all quality concerns to ensure our products perform to the highest standards

If the product does not perform as described on this datasheet, we will offer a refund or replacement. For full details of the Abpromise, please visit <https://www.abcam.co.jp/abpromise> or contact our technical team.

Terms and conditions

- Guarantee only valid for products bought direct from Abcam or one of our authorized distributors