

Anti-Metabotropic Glutamate Receptor 2 + 3 / MGLUR2 + MGLUR3 antibody [EPR8975] ab150387

リコンビナント **RabMAb**

★★★★★ **1 Abreviews** **8 References** **画像数 9**

製品の概要

製品名	Anti-Metabotropic Glutamate Receptor 2 + 3 / MGLUR2 + MGLUR3 antibody [EPR8975]
製品の詳細	Rabbit monoclonal [EPR8975] to Metabotropic Glutamate Receptor 2/MGLUR2 + Metabotropic Glutamate Receptor 3/MGLUR3
由来種	Rabbit
アプリケーション	適用あり: IHC-P, WB, ICC/IF, Flow Cyt (Intra)
種交差性	交差種: Mouse, Rat, Human
免疫原	Synthetic peptide. This information is proprietary to Abcam and/or its suppliers.
ポジティブ・コントロール	ICC/IF: Mouse primary neurone cells
特記事項	<p>This product is a recombinant monoclonal antibody, which offers several advantages including:</p> <ul style="list-style-type: none">- High batch-to-batch consistency and reproducibility- Improved sensitivity and specificity- Long-term security of supply- Animal-free production <p>For more information see here.</p> <p>Our RabMAb[®] technology is a patented hybridoma-based technology for making rabbit monoclonal antibodies. For details on our patents, please refer to RabMAb[®] patents.</p>

製品の特性

製品の状態	Liquid
保存方法	Shipped at 4°C. Upon delivery aliquot and store at -20°C. Avoid freeze / thaw cycles.
バッファー	pH: 7.2 Preservative: 0.01% Sodium azide Constituents: 9% PBS, 40% Glycerol (glycerin, glycerine), 0.05% BSA, 50% Tissue culture supernatant
精製度	Tissue culture supernatant
ポリ/モノ	モノクローナル
クローン名	EPR8975

アプリケーション

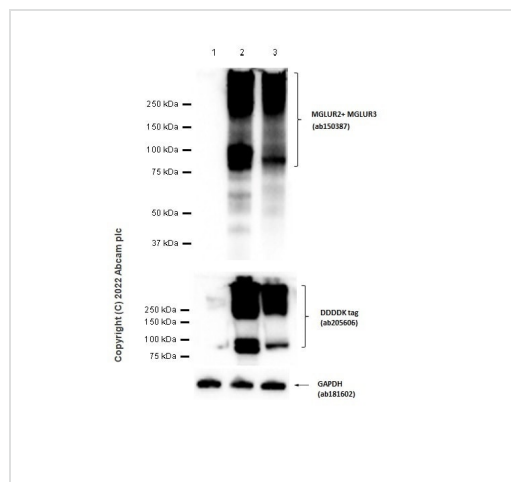
The Abpromise guarantee **Abpromise保証は、次のテスト済みアプリケーションにおけるab150387の使用に適用されます**
 アプリケーションノートには、推奨の開始希釈率がありますが、適切な希釈率につきましてはご確認ください。

アプリケーション	Abreviews	特記事項
IHC-P		1/1800. Perform heat mediated antigen retrieval with citrate buffer pH 6 before commencing with IHC staining protocol. For unpurified use at dilution between 1/100 to 1/250
WB	★★★★★ (1)	1/10000 - 1/50000. Predicted molecular weight: 95 kDa.
ICC/IF		Use at an assay dependent concentration.
Flow Cyt (Intra)		1/70.

ターゲット情報

細胞内局在 Metabotropic Glutamate Receptor 2/MGLUR2: Cell membrane. Metabotropic Glutamate Receptor 3/MGLUR3: Cell membrane.

画像



Western blot - Anti-Metabotropic Glutamate Receptor 2 + 3 / MGLUR2 + MGLUR3 antibody [EPR8975] (ab150387)

All lanes : Anti-Metabotropic Glutamate Receptor 2 + 3 / MGLUR2 + MGLUR3 antibody [EPR8975] (ab150387) at 1/10000 dilution

Lane 1 : HEK-293T (Human embryonic kidney epithelial cell) transfected with an empty vector (vector control), containing a myc/flag-tag, not boiled whole cell lysate

Lane 2 : HEK-293T (Human embryonic kidney epithelial cell) transfected with MGLUR2 (aa1-872) with myc/flag-tag, not boiled whole cell lysate

Lane 3 : HEK-293T (Human embryonic kidney epithelial cell) transfected with MGLUR3 (aa1-879) with myc/flag-tag, not boiled whole cell lysate

Lysates/proteins at 20 µg per lane.

Secondary

All lanes : Goat Anti-Rabbit IgG H&L (HRP) (**ab97051**) at 1/20000 dilution

Predicted band size: 95 kDa

Observed band size: 250,95 kDa

Exposure time: 3 seconds

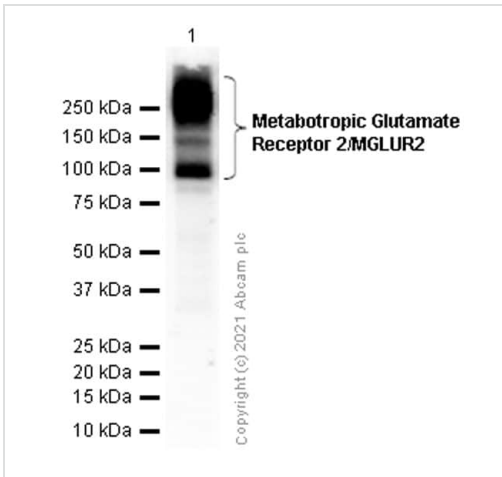
Blocking buffer: 5% NFDm/TBST.

Anti-Metabotropic Glutamate Receptor 2 + 3 / MGLUR2 + MGLUR3 antibody [EPR8975] (ab150387) at 1/10000 dilution (Purified) + Human brain lysate unboiled

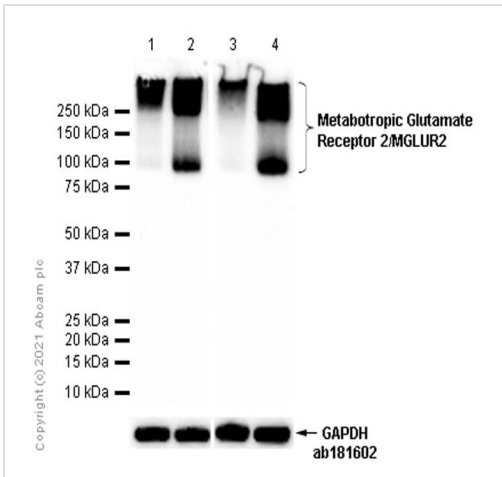
Secondary

Goat Anti-Rabbit IgG (HRP) with minimal cross-reactivity with human IgG at 1/2000 dilution

Predicted band size: 95 kDa



Western blot - Anti-Metabotropic Glutamate Receptor 2 + 3 / MGLUR2 + MGLUR3 antibody [EPR8975] (ab150387)



Western blot - Anti-Metabotropic Glutamate Receptor 2 + 3 / MGLUR2 + MGLUR3 antibody [EPR8975] (ab150387)

All lanes : Anti-Metabotropic Glutamate Receptor 2 + 3 / MGLUR2 + MGLUR3 antibody [EPR8975] (ab150387) at 1/10000 dilution (Purified)

Lane 1 : Mouse brain lysate boiled

Lane 2 : Mouse brain lysate unboiled

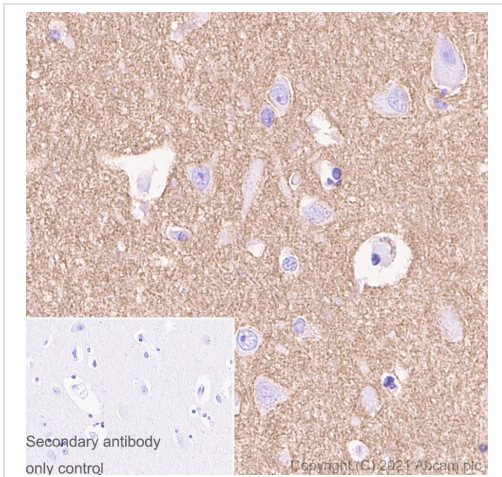
Lane 3 : Rat brain lysate boiled

Lane 4 : Rat brain lysate unboiled

Secondary

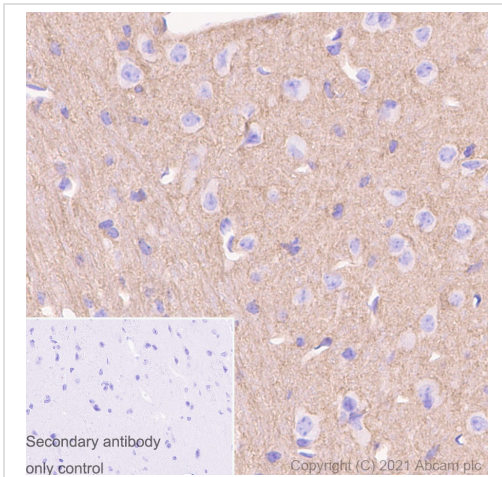
All lanes : Goat Anti-Rabbit IgG (HRP) with minimal cross-reactivity with human IgG at 1/2000 dilution

Predicted band size: 95 kDa



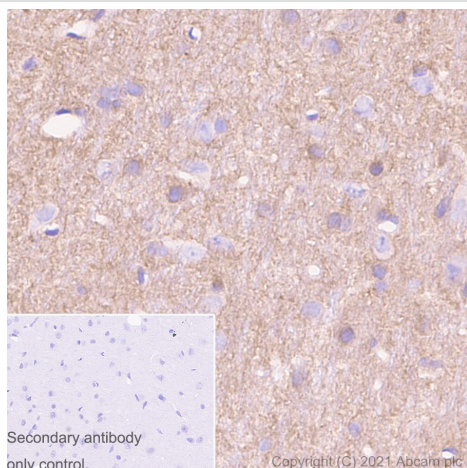
Immunohistochemistry (Formalin/PFA-fixed paraffin-embedded sections) analysis of human cerebrum tissue sections labeling Metabotropic Glutamate Receptor 2/MGLUR2 with Purified ab150387 at 1:1800 (0.36 µg/ml). Heat mediated antigen retrieval was performed using Heat mediated antigen retrieval using Bond™ Epitope Retrieval Solution 2 (pH 9.0) . Tissue was counterstained with Hematoxylin. Rabbit specific IHC polymer detection kit HRP/DAB (**ab209101**) secondary antibody was used at 1:0 dilution. PBS instead of the primary antibody was used as the negative control.

Immunohistochemistry (Formalin/PFA-fixed paraffin-embedded sections) - Anti-Metabotropic Glutamate Receptor 2 + 3 / MGLUR2 + MGLUR3 antibody [EPR8975] (ab150387)



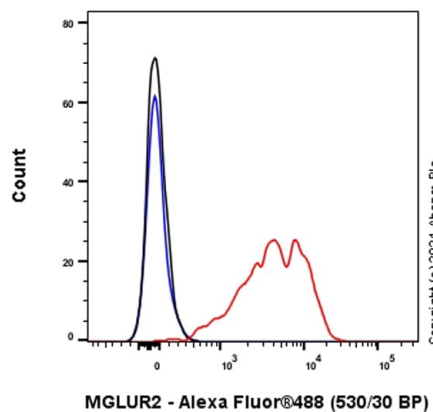
Immunohistochemistry (Formalin/PFA-fixed paraffin-embedded sections) analysis of mouse cerebrum tissue sections labeling Metabotropic Glutamate Receptor 2/MGLUR2 with Purified ab150387 at 1:1800 (0.36 µg/ml). Heat mediated antigen retrieval was performed using Heat mediated antigen retrieval using Bond™ Epitope Retrieval Solution 2 (pH 9.0) . Tissue was counterstained with Hematoxylin. Rabbit specific IHC polymer detection kit HRP/DAB (**ab209101**) secondary antibody was used at 1:0 dilution. PBS instead of the primary antibody was used as the negative control.

Immunohistochemistry (Formalin/PFA-fixed paraffin-embedded sections) - Anti-Metabotropic Glutamate Receptor 2 + 3 / MGLUR2 + MGLUR3 antibody [EPR8975] (ab150387)



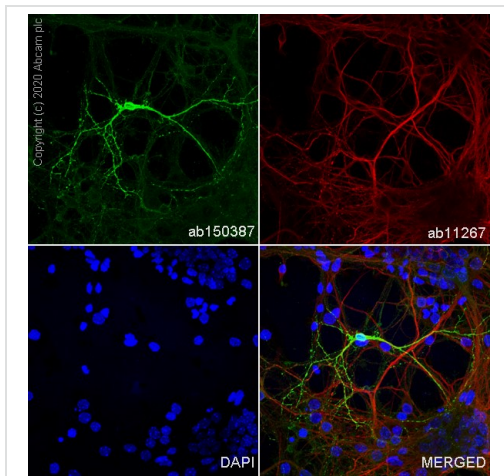
Immunohistochemistry (Formalin/PFA-fixed paraffin-embedded sections) analysis of rat cerebrum tissue sections labeling Metabotropic Glutamate Receptor 2/MGLUR2 with Purified ab150387 at 1:1800 (0.36 µg/ml). Heat mediated antigen retrieval was performed using Heat mediated antigen retrieval using Bond™ Epitope Retrieval Solution 2 (pH 9.0) . Tissue was counterstained with Hematoxylin. Rabbit specific IHC polymer detection kit HRP/DAB (**ab209101**) secondary antibody was used at 1:0 dilution. PBS instead of the primary antibody was used as the negative control.

Immunohistochemistry (Formalin/PFA-fixed paraffin-embedded sections) - Anti-Metabotropic Glutamate Receptor 2 + 3 / MGLUR2 + MGLUR3 antibody [EPR8975] (ab150387)



Flow Cytometry analysis of Mouse primary neuron cells cells labelling Metabotropic Glutamate Receptor 2/MGLUR2 with Purified ab150387 at 1:70 dilution (10 µg/ml) (Red). Cells were fixed with 4% Paraformaldehyde and permeabilised with 90% Methanol. A Goat anti rabbit IgG (Alexa Fluor® 488, **ab150081**) secondary antibody was used at 1:2000. Isotype control - Rabbit monoclonal IgG (Black). Unlabelled control - Cell without incubation with primary antibody and secondary antibody (Blue).

Flow Cytometry (Intracellular) - Anti-Metabotropic Glutamate Receptor 2 + 3 / MGLUR2 + MGLUR3 antibody [EPR8975] (ab150387)







Immunocytochemistry/ Immunofluorescence - Anti-Metabotropic Glutamate Receptor 2 + 3 / MGLUR2 + MGLUR3 antibody [EPR8975] (ab150387)

Immunocytochemistry analysis of mouse primary neurone cells labelling MGLUR2 with ab150387 at 2 µg/mL. Cells were fixed with 4% paraformaldehyde and permeabilized with 0.1% Triton X-100. Goat Anti-Rabbit IgG H&L (Alexa Fluor® 488) (**ab150113**) at 1/1000 was used as the secondary antibody (green). Cells were counterstained with Anti-MAP2 rabbit monoclonal antibody (**ab11267**) at 1/500 dilution and Goat Anti-Mouse IgG H&L (Alexa Fluor® 594) (**ab150120**) at 1/1000 dilution (red). Nuclear DNA was labelled with DAPI (blue).

Confocal image showing positive staining in mouse primary neuron cells.

Confocal scanning Z step was set as 0.3 µm followed by image processing with maximum Z projection.

Why choose a recombinant antibody?

 <p>Research with confidence Consistent and reproducible results</p>	 <p>Long-term and scalable supply Recombinant technology</p>
 <p>Success from the first experiment Confirmed specificity</p>	 <p>Ethical standards compliant Animal-free production</p>

Anti-Metabotropic Glutamate Receptor 2 + 3 / MGLUR2 + MGLUR3 antibody [EPR8975] (ab150387)

Please note: All products are "FOR RESEARCH USE ONLY. NOT FOR USE IN DIAGNOSTIC PROCEDURES"

Our Abpromise to you: Quality guaranteed and expert technical support

- Replacement or refund for products not performing as stated on the datasheet
- Valid for 12 months from date of delivery
- Response to your inquiry within 24 hours

- We provide support in Chinese, English, French, German, Japanese and Spanish
- Extensive multi-media technical resources to help you
- We investigate all quality concerns to ensure our products perform to the highest standards

If the product does not perform as described on this datasheet, we will offer a refund or replacement. For full details of the Abpromise, please visit <https://www.abcam.co.jp/abpromise> or contact our technical team.

Terms and conditions

- Guarantee only valid for products bought direct from Abcam or one of our authorized distributors