

Anti-Met Enkephalin antibody ab22620

★★★★☆ [2 Abreviews](#) [2 References](#) [画像数 2](#)

製品の概要

製品名	Anti-Met Enkephalin antibody
製品の詳細	Rabbit polyclonal to Met Enkephalin
由来種	Rabbit
特異性	Recognizes methionine enkephalin in a wide range of species.
アプリケーション	適用あり: ICC/IF, IHC-P
種交差性	交差種: Human
免疫原	Synthetic peptide corresponding to Met Enkephalin conjugated to keyhole limpet haemocyanin (Glutaraldehyde). The conjugate was dialysed to remove excess conjugating agent prior to immunisation. Sequence: YGGF M

Database link: [P01210](#)

 [Run BLAST with](#)

 [Run BLAST with](#)

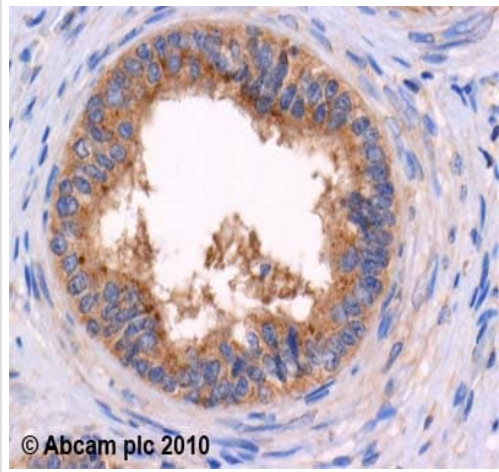
ポジティブ・コントロール Typical test tissues included rat and human brain, rat spinal cord, pig duodenum, guinea pig ileum (enteric nervous system) and human phaeochromocytoma (adrenomedullary tumour)

特記事項 The Life Science industry has been in the grips of a reproducibility crisis for a number of years. Abcam is leading the way in addressing this with our range of recombinant monoclonal antibodies and knockout edited cell lines for gold-standard validation. Please check that this product meets your needs before purchasing.

If you have any questions, special requirements or concerns, please send us an inquiry and/or contact our Support team ahead of purchase. Recommended alternatives for this product can be found below, along with publications, customer reviews and Q&As

製品の特性

製品の状態	Liquid
保存方法	Shipped at 4°C. Upon delivery aliquot and store at -20°C. Avoid freeze / thaw cycles.
バッファー	Preservative: 0.01% Sodium azide Constituent: Whole serum
精製度	Whole antiserum



Immunohistochemistry (Formalin/PFA-fixed paraffin-embedded sections) - Anti-Met Enkephalin antibody (ab22620)

ab22620 (4µg/ml) staining met-enkephalin in human testis using an automated system (DAKO Autostainer Plus). Using this protocol there is cytoplasmic staining of seminal vesicles.

Sections were rehydrated and antigen retrieved with the Dako 3 in 1 AR buffer EDTA pH 9.0 in a DAKO PT link. Slides were peroxidase blocked in 3% H₂O₂ in methanol for 10 mins. They were then blocked with Dako Protein block for 10 minutes (containing casein 0.25% in PBS) then incubated with primary antibody for 20 min and detected with Dako Envision Flex amplification kit for 30 minutes. Colorimetric detection was completed with Diaminobenzidine for 5 minutes. Slides were counterstained with Haematoxylin and coverslipped under DePeX. Please note that, for manual staining, optimization of primary antibody concentration and incubation time is recommended. Signal amplification may be required.

Please note: All products are "FOR RESEARCH USE ONLY. NOT FOR USE IN DIAGNOSTIC PROCEDURES"

Our Abpromise to you: Quality guaranteed and expert technical support

- Replacement or refund for products not performing as stated on the datasheet
- Valid for 12 months from date of delivery
- Response to your inquiry within 24 hours
- We provide support in Chinese, English, French, German, Japanese and Spanish
- Extensive multi-media technical resources to help you
- We investigate all quality concerns to ensure our products perform to the highest standards

If the product does not perform as described on this datasheet, we will offer a refund or replacement. For full details of the Abpromise, please visit <https://www.abcam.co.jp/abpromise> or contact our technical team.

Terms and conditions

- Guarantee only valid for products bought direct from Abcam or one of our authorized distributors