


Anti-Met (c-Met) (phospho Y1230 + Y1234 + Y1235) antibody ab5662

★★★★★ 7 Abreviews 30 References 画像数 1

製品の概要

製品名	Anti-Met (c-Met) (phospho Y1230 + Y1234 + Y1235) antibody
製品の詳細	Rabbit polyclonal to Met (c-Met) (phospho Y1230 + Y1234 + Y1235)
由来種	Rabbit
特異性	The phosphospecific antibody that has been generated does not distinguish between the dually (pYpY 1234/1235) and triply (pYpYpY1230/1234/1235) phosphorylated forms of c-Met, both of which are likely to represent activated forms of this receptor.
アプリケーション	適用あり: WB
種交差性	交差種: Human 交差が予測される動物種: Mouse, Rat 
免疫原	Synthetic peptide corresponding to Met (c-Met) (phospho Y1230 + Y1234 + Y1235).
ポジティブ・コントロール	WB: HEK-293T whole cell lysate.
特記事項	

Binding of scatter factor (SF)/hepatocyte growth factor (HGF) to the c Met receptor tyrosine kinase (RTK) triggers receptor dimerization and phosphorylation on multiple residues within the juxtamembrane, catalytic core and cytoplasmic tail domains, thereby regulating receptor internalization, catalytic activity and multisubstrate docking. c Met contains three tyrosines (Tyr-xx-x-Tyr-Tyr motif) within the activation loop of the catalytic domain. This is also seen with the insulin receptor, insulin-like growth factor receptor (IGF1) receptor and nerve growth factor (NGF) receptors/Trks, for which phosphorylation of all three tyrosines is required for full activation. With c Met (and the related family member, RON) phosphorylation of tyrosines 1234 and 1235 has been shown to be important in receptor activation. Activation of the c Met receptor results in binding and/or phosphorylation of many intracellular signaling proteins including multiple adaptor proteins (e.g., Grb2, Shc, Cbl, Crk, cortactin, paxillin, and GAB1), and a variety of other signal transducers (e.g., PI 3-kinase, FAK, Src, Erk1&2, JNK, PLC- α , and STAT3).

The Life Science industry has been in the grips of a reproducibility crisis for a number of years. Abcam is leading the way in addressing this with our range of recombinant monoclonal antibodies and knockout edited cell lines for gold-standard validation. Please check that this product meets your needs before purchasing.

If you have any questions, special requirements or concerns, please send us an inquiry and/or contact our Support team ahead of purchase. Recommended alternatives for this product can be found below, along with publications, customer reviews and Q&As

製品の特 性

製品の状態	Liquid
保存方法	Shipped at 4°C. Store at +4°C short term (1-2 weeks). Upon delivery aliquot. Store at -20°C long term. Avoid freeze / thaw cycle.
バッファー	pH: 7.30 Preservative: 0.05% Sodium azide Constituents: PBS, 50% Glycerol, 0.1% BSA
精製度	Immunogen affinity purified
特記事項 (精製)	The antibody has been negatively preadsorbed using a non-phosphopeptide corresponding to the site of phosphorylation to remove antibody that is reactive with non-phosphorylated c-Met protein. The final product is generated by affinity chromatography using a c Met-derived peptide that is phosphorylated at tyrosines 1230, 1234, 1235.
一次抗体 備考	Binding of scatter factor (SF)/hepatocyte growth factor (HGF) to the c Met receptor tyrosine kinase (RTK) triggers receptor dimerization and phosphorylation on multiple residues within the juxtamembrane, catalytic core and cytoplasmic tail domains, thereby regulating receptor internalization, catalytic activity and multisubstrate docking. c Met contains three tyrosines (Tyr-xx-x-Tyr-Tyr motif) within the activation loop of the catalytic domain. This is also seen with the insulin receptor, insulin-like growth factor receptor (IGF1) receptor and nerve growth factor (NGF) receptors/Trks, for which phosphorylation of all three tyrosines is required for full activation. With c Met (and the related family member, RON) phosphorylation of tyrosines 1234 and 1235 has been shown to be important in receptor activation. Activation of the c Met receptor results in binding and/or phosphorylation of many intracellular signaling proteins including multiple adaptor proteins (e.g., Grb2, Shc, Cbl, Crk, cortactin, paxillin, and GAB1), and a variety of other signal transducers (e.g., PI 3-kinase, FAK, Src, Erk1&2, JNK, PLC- α , and STAT3).
ポリ/モノ	ポリクローナル
アイソタイプ	IgG

アプリケーション

The Abpromise guarantee **Abpromise保証は、次のテスト済みアプリケーションにおけるab5662の使用に適用されます**
アプリケーションノートには、推奨の開始希釈率がありますが、適切な希釈率につきましてはご検討ください。

アプリケーション	Abreviews	特記事項
WB	★★★★★ (2)	1/1000. Detects a band of approximately 169 kDa.

ターゲット情報

機能	Receptor for hepatocyte growth factor and scatter factor. Has a tyrosine-protein kinase activity. Functions in cell proliferation, scattering, morphogenesis and survival.
関連疾患	Note=Activation of MET after rearrangement with the TPR gene produces an oncogenic protein. Note=Defects in MET may be associated with gastric cancer. Defects in MET are a cause of hepatocellular carcinoma (HCC) [MIM:114550].

Defects in MET are a cause of renal cell carcinoma papillary (RCCP) [MIM:605074]. It is a subtype of renal cell carcinoma tending to show a tubulo-papillary architecture formed by numerous, irregular, finger-like projections of connective tissue. Renal cell carcinoma is a heterogeneous group of sporadic or hereditary carcinoma derived from cells of the proximal renal tubular epithelium. It is subclassified into common renal cell carcinoma (clear cell, non-papillary carcinoma), papillary renal cell carcinoma, chromophobe renal cell carcinoma, collecting duct carcinoma with medullary carcinoma of the kidney, and unclassified renal cell carcinoma. Note=A common allele in the promoter region of the MET shows genetic association with susceptibility to autism in some families. Functional assays indicate a decrease in MET promoter activity and altered binding of specific transcription factor complexes. Note=MET activating mutations may be involved in the development of a highly malignant, metastatic syndrome known as cancer of unknown primary origin (CUP) or primary occult malignancy. Systemic neoplastic spread is generally a late event in cancer progression. However, in some instances, distant dissemination arises at a very early stage, so that metastases reach clinical relevance before primary lesions. Sometimes, the primary lesions cannot be identified in spite of the progresses in the diagnosis of malignancies.

配列類似性

Belongs to the protein kinase superfamily. Tyr protein kinase family.
Contains 3 IPT/TIG domains.
Contains 1 protein kinase domain.
Contains 1 Sema domain.

ドメイン

The kinase domain is involved in SPSB1 binding.

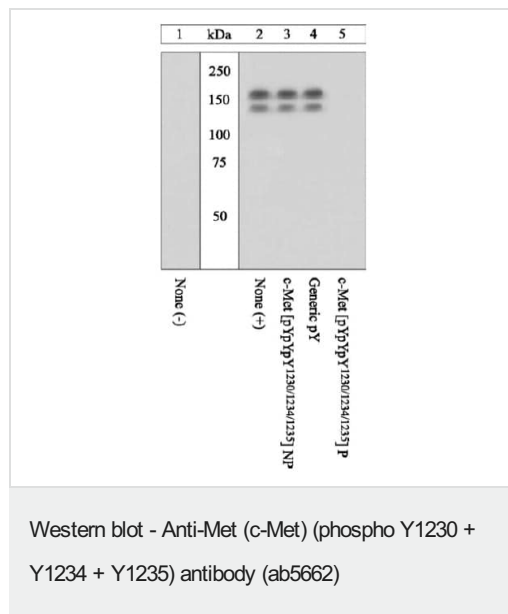
翻訳後修飾

Dephosphorylated by PTPRJ at Tyr-1349 and Tyr-1365.

細胞内局在

Membrane.

画像



All lanes : Anti-Met (c-Met) (phospho Y1230 + Y1234 + Y1235) antibody (ab5662) at 1/1000 dilution

Lane 1 : Unstimulated (-), HEK-293T (human epithelial cell line from embryonic kidney transformed with large T antigen) whole cell extract

Lanes 2-5 : Stimulated (+) with HGF, HEK-293T whole cell extract

Secondary

All lanes : Goat F(ab')₂ antirabbit IgG HRP conjugate

Peptide Competition:

Prior primary antibody incubation:

1 and 2 - no peptide,

3 - non-phosphopeptide corresponding to the immunogen,

4 -generic phosphotyrosine-containing peptide),

5 - phosphopeptide immunogen.

SDS-PAGE on a 10% polyacrylamide gel and transferred to PVDF. Membranes were blocked with a 5% BSA-TBST buffer overnight at 4°C.

Bands were detected using the Pierce SuperSignal method.

The data show that only the phosphopeptide corresponding to c Met pYpYpY1230/1234/1235] block the antibody signal, demonstrating the specificity of the antibody.

Note: There are three isoforms of c Met, two of which are recognized by this antibody.

Please note: All products are "FOR RESEARCH USE ONLY. NOT FOR USE IN DIAGNOSTIC PROCEDURES"

Our Abpromise to you: Quality guaranteed and expert technical support

- Replacement or refund for products not performing as stated on the datasheet
- Valid for 12 months from date of delivery
- Response to your inquiry within 24 hours
- We provide support in Chinese, English, French, German, Japanese and Spanish
- Extensive multi-media technical resources to help you
- We investigate all quality concerns to ensure our products perform to the highest standards

If the product does not perform as described on this datasheet, we will offer a refund or replacement. For full details of the Abpromise, please visit <https://www.abcam.co.jp/abpromise> or contact our technical team.

Terms and conditions

- Guarantee only valid for products bought direct from Abcam or one of our authorized distributors