

Anti-Mesothelioma antibody [HBME-1] ab2383

4 References [画像数 3](#)

製品の概要

製品名	Anti-Mesothelioma antibody [HBME-1]
製品の詳細	Mouse monoclonal [HBME-1] to Mesothelioma
由来種	Mouse
特異性	This antibody reacts with an unknown antigen on microvilli of mesothelioma cells. It stains normal mesothelial cells as well as epithelial mesotheliomas in a thick membrane pattern due to abundant lung microvilli on the surface of these cells.
アプリケーション	適用あり: IHC-P
種交差性	交差種: Human
免疫原	Tissue, cells or virus corresponding to Mesothelioma. Suspension of human mesothelioma cells from patients with malignant epithelial mesothelioma
ポジティブ・コントロール	Mesothelioma.
特記事項	<p>The Life Science industry has been in the grips of a reproducibility crisis for a number of years. Abcam is leading the way in addressing this with our range of recombinant monoclonal antibodies and knockout edited cell lines for gold-standard validation. Please check that this product meets your needs before purchasing.</p> <p>If you have any questions, special requirements or concerns, please send us an inquiry and/or contact our Support team ahead of purchase. Recommended alternatives for this product can be found below, along with publications, customer reviews and Q&As</p>

製品の特性

製品の状態	Liquid
保存方法	Shipped at 4°C. Store at +4°C short term (1-2 weeks). Store at -20°C or -80°C. Avoid freeze / thaw cycle.
バッファー	<p>pH: 7.3</p> <p>Preservative: 0.05% Sodium azide</p> <p>Constituent: 1% BSA</p>
精製度	Purified IgM
ポリ/モノ	モノクローナル
クローン名	HBME-1

ミエローマ	unknown
アイソタイプ	IgM
軽鎖の種類	unknown

アプリケーション

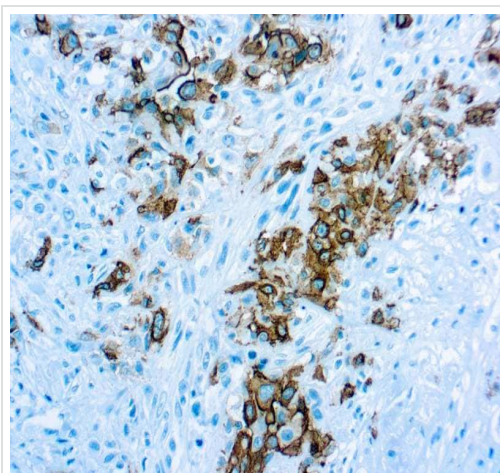
The Abpromise guarantee **Abpromise保証は、**次のテスト済みアプリケーションにおけるab2383の使用に適用されます
アプリケーションノートには、推奨の開始希釈率がありますが、適切な希釈率につきましてはご検討ください。

アプリケーション	Abreviews	特記事項
IHC-P		1/15 - 1/25. Perform heat mediated antigen retrieval with citrate buffer pH 6 before commencing with IHC staining protocol. Primary incubation for 30 minutes at room temperature.

ターゲット情報

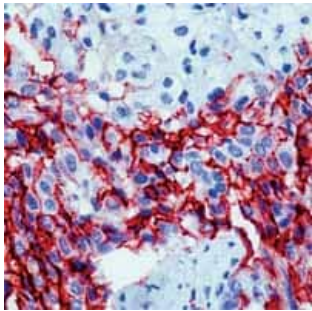
関連性 Mesothelioma is a rare form of carcinoma of the mesothelial cells which that normally line the body cavities, including the pleura, peritoneum, pericardium, and testis. It may be localized or diffuse. Most, but not all, cases of pleural malignant mesothelioma are associated with asbestos exposure.

画像



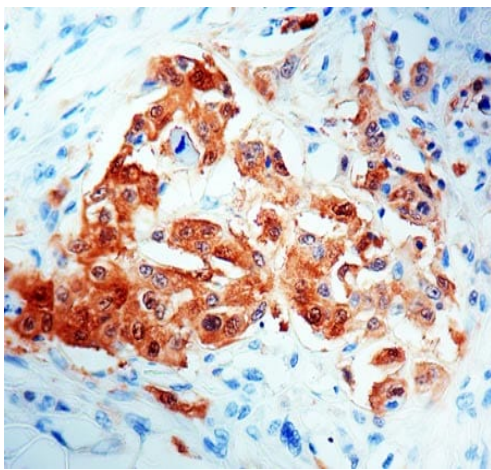
Formalin-fixed, paraffin-embedded human mesothelioma tissue stained for Mesothelioma using ab2383 at 1/15 dilution in immunohistochemical analysis. Antigen retrieval with citrate buffer pH 6.0

Immunohistochemistry (Formalin/PFA-fixed paraffin-embedded sections) - Anti-Mesothelioma antibody [HBME-1] (ab2383)



ab2383 staining human mesothelioma by IHC-P.

Immunohistochemistry (Formalin/PFA-fixed paraffin-embedded sections) - Anti-Mesothelioma antibody [HBME-1] (ab2383)



Immunohistochemical analysis of formalin-fixed, paraffin-embedded Human mesothelioma tissue, staining Mesothelioma with ab2383.

Immunohistochemistry (Formalin/PFA-fixed paraffin-embedded sections) - Anti-Mesothelioma antibody [HBME-1] (ab2383)

Please note: All products are "FOR RESEARCH USE ONLY. NOT FOR USE IN DIAGNOSTIC PROCEDURES"

Our Abpromise to you: Quality guaranteed and expert technical support

- Replacement or refund for products not performing as stated on the datasheet
- Valid for 12 months from date of delivery
- Response to your inquiry within 24 hours
- We provide support in Chinese, English, French, German, Japanese and Spanish
- Extensive multi-media technical resources to help you
- We investigate all quality concerns to ensure our products perform to the highest standards

If the product does not perform as described on this datasheet, we will offer a refund or replacement. For full details of the Abpromise, please visit <https://www.abcam.co.jp/abpromise> or contact our technical team.

Terms and conditions

- Guarantee only valid for products bought direct from Abcam or one of our authorized distributors