

Anti-MERTK antibody ab95925

7 References [画像数 3](#)

製品の概要

製品名	Anti-MERTK antibody
製品の詳細	Rabbit polyclonal to MERTK
由来種	Rabbit
アプリケーション	適用あり: WB, ICC/IF
種交差性	交差種: Mouse 交差が予測される動物種: Rat 
免疫原	Synthetic peptide corresponding to Mouse MERTK aa 900 to the C-terminus conjugated to keyhole limpet haemocyanin. (Peptide available as ab106208)
ポジティブ・コントロール	This antibody gave a positive signal in the following whole cell lysates: NIH 3T3; RAW 264.7. This antibody gave a positive signal in the following Mouse tissue lysates: Brain, Spleen, Kidney.
特記事項	<p>The Life Science industry has been in the grips of a reproducibility crisis for a number of years. Abcam is leading the way in addressing this with our range of recombinant monoclonal antibodies and knockout edited cell lines for gold-standard validation. Please check that this product meets your needs before purchasing.</p> <p>If you have any questions, special requirements or concerns, please send us an inquiry and/or contact our Support team ahead of purchase. Recommended alternatives for this product can be found below, along with publications, customer reviews and Q&As</p>

製品の特性

製品の状態	Liquid
保存方法	Shipped at 4°C. Store at +4°C short term (1-2 weeks). Upon delivery aliquot. Store at -20°C or -80°C. Avoid freeze / thaw cycle.
バッファー	pH: 7.40 Preservative: 0.02% Sodium azide Constituent: PBS
	Batches of this product that have a concentration < 1mg/ml may have BSA added as a stabilising agent. If you would like information about the formulation of a specific lot, please contact our scientific support team who will be happy to help.

精製度	Immunogen affinity purified
ポリ/モノ	ポリクローナル
アイソタイプ	IgG

アプリケーション

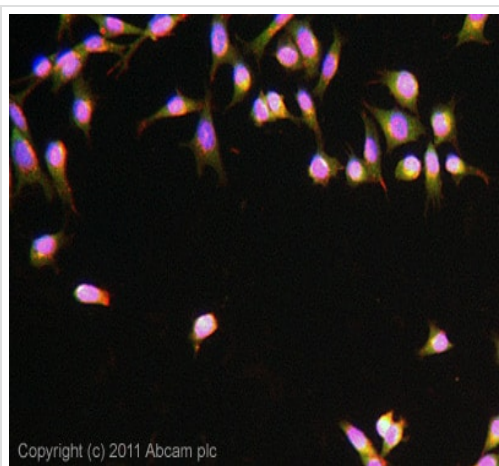
The Abpromise guarantee **Abpromise保証は、次のテスト済みアプリケーションにおけるab95925の使用に適用されます**
 アプリケーションノートには、推奨の開始希釈率がありますが、適切な希釈率につきましてはご確認ください。

アプリケーション	Abreviews	特記事項
WB		Use a concentration of 1 µg/ml. Detects a band of approximately 150, 190 kDa (predicted molecular weight: 110 kDa). Abcam recommends using milk as the blocking agent.
ICC/IF		Use a concentration of 10 µg/ml.

ターゲット情報

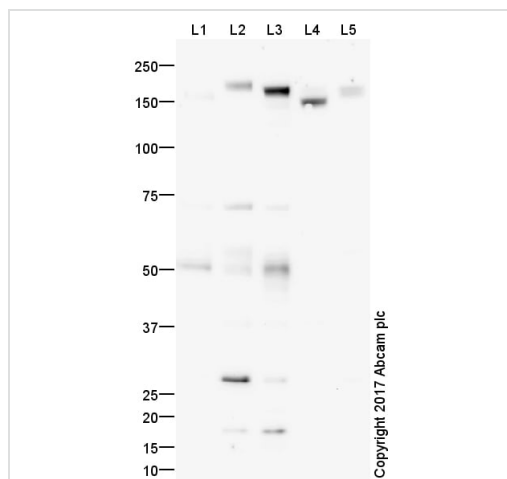
機能	In case of filovirus infection, seems to function as a cell entry factor.
組織特異性	Not expressed in normal B- and T-lymphocytes but is expressed in numerous neoplastic B- and T-cell lines.
関連疾患	Defects in MERTK are the cause of retinitis pigmentosa type 38 (RP38) [MIM:613862]. RP38 is a retinal dystrophy belonging to the group of pigmentary retinopathies. Retinitis pigmentosa is characterized by retinal pigment deposits visible on fundus examination and primary loss of rod photoreceptor cells followed by secondary loss of cone photoreceptors. Patients typically have night vision blindness and loss of midperipheral visual field. As their condition progresses, they lose their far peripheral visual field and eventually central vision as well.
配列類似性	Belongs to the protein kinase superfamily. Tyr protein kinase family. AXL/UFO subfamily. Contains 2 fibronectin type-III domains. Contains 2 Ig-like C2-type (immunoglobulin-like) domains. Contains 1 protein kinase domain.
細胞内局在	Membrane.

画像



Immunocytochemistry/ Immunofluorescence - Anti-MERTK antibody (ab95925)

ICC/IF image of ab95925 stained MEF1 cells. The cells were 4% formaldehyde fixed (10 min) and then incubated in 1%BSA / 10% normal goat serum / 0.3M glycine in 0.1% PBS-Tween for 1h to permeabilise the cells and block non-specific protein-protein interactions. The cells were then incubated with the antibody ab95925 at 10µg/ml overnight at +4°C. The secondary antibody (green) was DyLight® 488 goat anti- rabbit ([ab96899](#)) IgG (H+L) used at a 1/1000 dilution for 1h. Alexa Fluor® 594 WGA was used to label plasma membranes (red) at a 1/200 dilution for 1h. DAPI was used to stain the cell nuclei (blue) at a concentration of 1.43µM.



Western blot - Anti-MERTK antibody (ab95925)

All lanes : Anti-MERTK antibody (ab95925) at 1 µg/ml

- Lane 1 :** NIH 3T3 (Mouse) Whole Cell Lysate
- Lane 2 :** RAW 264.7 (Mouse) Whole Cell Lysate
- Lane 3 :** Spleen (Mouse) Tissue Lysate
- Lane 4 :** Brain (Mouse) Tissue Lysate
- Lane 5 :** Kidney (Mouse) Tissue Lysate

Lysates/proteins at 20 µg per lane.

Secondary

All lanes : Goat Anti-Rabbit IgG H&L (HRP) preadsorbed at 1/50000 dilution

Developed using the ECL technique.

Performed under reducing conditions.

Predicted band size: 110 kDa

Observed band size: 150,190 kDa

Additional bands at: 28 kDa, 50 kDa, 70 kDa. We are unsure as

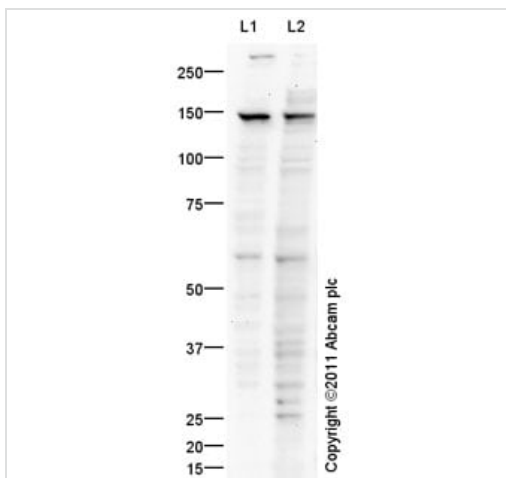
to the identity of these extra bands.

Exposure time: 20 minutes

This blot was produced using a 4-12% Bis-tris gel under the MOPS buffer system. The gel was run at 200V for 50 minutes before being transferred onto a Nitrocellulose membrane at 30V for 70 minutes. The membrane was then blocked for an hour using 3% Milk before being incubated with ab95925 overnight at 4°C. Antibody binding was detected using an anti-rabbit antibody conjugated to HRP, and visualised using ECL development solution [ab133406](#).

Although MERTK has a predicted mw of 110 kDa, it has been shown to migrate at 150-190 kDa due to glycosylation, dependant upon the tissue in which it is expressed (*J. Biol. Chem.*, 277, 17016-17022).

Abcam recommends using milk as the blocking agent. Abcam welcomes customer feedback and would appreciate any comments regarding this product and the data presented above.



Western blot - Anti-MERTK antibody (ab95925)

All lanes : Anti-MERTK antibody (ab95925) at 1 µg/ml

Lane 1 : NIH 3T3 (Mouse embryonic fibroblast cell line) Whole Cell Lysate

Lane 2 : RAW 264.7 (Mouse leukaemic monocyte macrophage cell line) Whole Cell Lysate

Lysates/proteins at 10 µg per lane.

Secondary

All lanes : Goat Anti-Rabbit IgG H&L (HRP) preadsorbed ([ab97080](#)) at 1/5000 dilution

Developed using the ECL technique.

Performed under reducing conditions.

Predicted band size: 110 kDa

Observed band size: 150 kDa

Additional bands at: 60 kDa. We are unsure as to the identity of these extra bands.

Exposure time: 8 minutes

MERTK protein contains a number of potential glycosylation sites (SwissProt), which may explain its migration at a higher molecular weight than predicted.

Please note: All products are "FOR RESEARCH USE ONLY. NOT FOR USE IN DIAGNOSTIC PROCEDURES"

Our Abpromise to you: Quality guaranteed and expert technical support

- Replacement or refund for products not performing as stated on the datasheet
- Valid for 12 months from date of delivery
- Response to your inquiry within 24 hours

- We provide support in Chinese, English, French, German, Japanese and Spanish
- Extensive multi-media technical resources to help you
- We investigate all quality concerns to ensure our products perform to the highest standards

If the product does not perform as described on this datasheet, we will offer a refund or replacement. For full details of the Abpromise, please visit <https://www.abcam.co.jp/abpromise> or contact our technical team.

Terms and conditions

- Guarantee only valid for products bought direct from Abcam or one of our authorized distributors