

Anti-Melanopsin antibody ab19306

5 References [画像数 2](#)

製品の概要

製品名	Anti-Melanopsin antibody
製品の詳細	Rabbit polyclonal to Melanopsin
由来種	Rabbit
アプリケーション	適用あり: WB, IHC-P, ICC/IF
種交差性	交差種: Mouse, Rat, Human
免疫原	Synthetic peptide corresponding to Rat Melanopsin aa 1-100. Database link: Q8R456

 [Run BLAST with](#)

 [Run BLAST with](#)

特記事項

The Life Science industry has been in the grips of a reproducibility crisis for a number of years. Abcam is leading the way in addressing this with our range of recombinant monoclonal antibodies and knockout edited cell lines for gold-standard validation. Please check that this product meets your needs before purchasing.

If you have any questions, special requirements or concerns, please send us an inquiry and/or contact our Support team ahead of purchase. Recommended alternatives for this product can be found below, along with publications, customer reviews and Q&As

製品の特性

製品の状態	Liquid
保存方法	Shipped at 4°C. Upon delivery aliquot and store at -20°C or -80°C. Avoid repeated freeze / thaw cycles.
バッファー	Preservative: 0.05% Sodium azide Constituents: PBS, 0.1% BSA
精製度	Immunogen affinity purified
ポリ/モノ	ポリクローナル
アイソタイプ	IgG

アプリケーション

The Abpromise guarantee

Abpromise保証は、次のテスト済みアプリケーションにおけるab19306の使用に適用されます

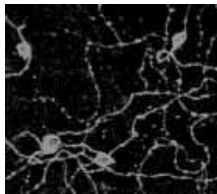
アプリケーションノートには、推奨の開始希釈率がありますが、適切な希釈率につきましてはご確認ください。

アプリケーション	Abreviews	特記事項
WB		Use a concentration of 0.1 - 0.2 µg/ml. Detects a band of approximately 53,85 kDa. Endogenous melanopsin is expressed at low levels making it difficult to detect. We recommend running a positive control and conducting experiments on samples overexpressing melanopsin protein.
IHC-P		Use at an assay dependent concentration.
ICC/IF		Use a concentration of 10 µg/ml.

ターゲット情報

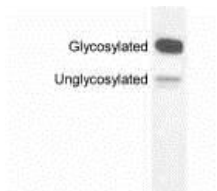
機能	Photoreceptor required for regulation of circadian rhythm. Contributes to pupillar reflex and other non-image forming responses to light. May be able to isomerize covalently bound all-trans retinal back to 11-cis retinal.
組織特異性	Eye. Expression is restricted within the ganglion and amacrine cell layers of the retina.
配列類似性	Belongs to the G-protein coupled receptor 1 family. Opsin subfamily.
細胞内局在	Cell membrane. Found in soma, dendrites and proximal part of axons of certain retinal ganglion cells.

画像



Immunofluorescence and immunocytochemistry staining of Melanopsin in rat retinal ganglion cells (RGCs) can be performed using ab19306.

Immunocytochemistry/ Immunofluorescence - Anti-Melanopsin antibody (ab19306)



By Western blot, this antibody detects ~53 and ~85 kDa proteins representing overexpressed unglycosylated and glycosylated rat melanopsin from HEK 293 cells.

Western blot - Anti-Melanopsin antibody (ab19306)

Please note: All products are "FOR RESEARCH USE ONLY. NOT FOR USE IN DIAGNOSTIC PROCEDURES"

Our Abpromise to you: Quality guaranteed and expert technical support

- Replacement or refund for products not performing as stated on the datasheet
- Valid for 12 months from date of delivery
- Response to your inquiry within 24 hours

- We provide support in Chinese, English, French, German, Japanese and Spanish
- Extensive multi-media technical resources to help you
- We investigate all quality concerns to ensure our products perform to the highest standards

If the product does not perform as described on this datasheet, we will offer a refund or replacement. For full details of the Abpromise, please visit <https://www.abcam.co.jp/abpromise> or contact our technical team.

Terms and conditions

- Guarantee only valid for products bought direct from Abcam or one of our authorized distributors