

Anti-Melanoma antibody [HMB45 + M2-7C10 + M2-9E3 + T311] ab733

リコンビナント

★★★★☆ **2 Abreviews** **11 References** **画像数 3**

製品の概要

製品名	Anti-Melanoma antibody [HMB45 + M2-7C10 + M2-9E3 + T311]
製品の詳細	Mouse recombinant multiclonal [HMB45 + M2-7C10 + M2-9E3 + T311] to Melanoma
由来種	Mouse
特異性	The HMB45 clone reacts with a neuraminidase-sensitive oligosaccharide side chain of a glycoconjugate present in immature melanosomes. The HMB45-reactive antigen is present in cutaneous melanocytes, prenatal and infantile retinal pigment epithelium and melanoma cells and is thought to be oncofetal in nature. This antibody has been shown to label the majority of melanomas. MART-1 recognizes a protein of 18kDa, identified as MART-1 (Melanoma Antigen Recognized by T cells 1) or Melan-A. Melan-A is a useful addition to melanoma panels as it is apparently specific for melanocytic lesions. Studies have also shown that MART-1 is more sensitive than HMB45 when labeling metastatic melanomas. Tyrosinase is a key enzyme involved in the initial stages of melanin biosynthesis. Studies have shown Tyrosinase to be a more sensitive marker when compared to HMB45 and MART-1. It has also shown to label a higher percentage of desmoplastic melanomas than HMB45.
アプリケーション	適用あり: ICC/IF, Flow Cyt (Intra), IHC-Fr, IHC-P
種交差性	交差種: Human
免疫原	HMB45 - Pigmented melanoma metastases from LN MART-1 - Recombinant human MART-1 protein Tyrosinase - Recombinant tyrosinase protein
ポジティブ・コントロール	Metastatic melanoma in lymph node.
特記事項	The combination of HMB45, MART-1 (M2-7C10 + M2-9E3) and Tyrosinase (T311) (SwissProt: P14679 Human, Omim: 606933 Human, Entrez Gene: 22173 Mouse, Entrez Gene: 308800 Rat) make this quadruple antibody cocktail a first-order pan melanoma screener, and may prove to be a valuable marker for melanoma metastasis in sentinel lymph nodes (see reference 3.).

The Life Science industry has been in the grips of a reproducibility crisis for a number of years. Abcam is leading the way in addressing this with our range of recombinant monoclonal antibodies and knockout edited cell lines for gold-standard validation. Please check that this product meets your needs before purchasing.

If you have any questions, special requirements or concerns, please send us an inquiry and/or contact our Support team ahead of purchase. Recommended alternatives for this product can be

found below, along with publications, customer reviews and Q&As

Please note that this antibody is an oligoclonal antibody. It is a cocktail of monoclonal antibodies that have been carefully selected. Oligoclonal antibodies have not only the specificity and batch-to-batch consistency of a monoclonal antibody, but also have the advantage of the sensitivity of a polyclonal antibody due to their ability to recognize multiple epitopes on an antigen.

製品の特性

製品の状態	Liquid
保存方法	Shipped at 4°C. Store at +4°C short term (1-2 weeks). Store at -20°C or -80°C. Avoid freeze / thaw cycle.
バッファー	Preservative: 0.1% Sodium azide Constituents: PBS, Carrier protein
精製度	Affinity purified
特記事項(精製)	Antibodies in this cocktail- HMB45, MART-1 and Tyrosinase are affinity purified.
一次抗体備考	The combination of HMB45, MART-1 (DT101 + BC199) and Tyrosinase (T311) make this quadruple antibody cocktail a first-order pan melanoma screener, and may prove to be a valuable marker for melanoma metastasis in sentinel lymph nodes (see reference 3.).
ポリ/モノ	Recombinant Multiclonal
クローン名	HMB45 + M2-7C10 + M2-9E3 + T311
ミエローマ	unknown
アイソタイプ	IgG
軽鎖の種類	kappa

アプリケーション

The Abpromise guarantee **Abpromise保証は、次のテスト済みアプリケーションにおけるab733の使用に適用されます**
アプリケーションノートには、推奨の開始希釈率がありますが、適切な希釈率につきましてはご検討ください。

アプリケーション	Abreviews	特記事項
ICC/IF	★★★★★ (1)	Use at an assay dependent concentration.
Flow Cyt (Intra)		1/100.
IHC-Fr		Use at an assay dependent concentration. ABC method.
IHC-P	★★★★☆ (1)	1/25 - 1/50. Perform heat mediated antigen retrieval before commencing with IHC staining protocol. It is sometimes difficult to interpret DAB stained melanomas due to endogenous pigment, therefore we recommend you substitute an AEC or a Fast Red substrate protocol.

ターゲット情報

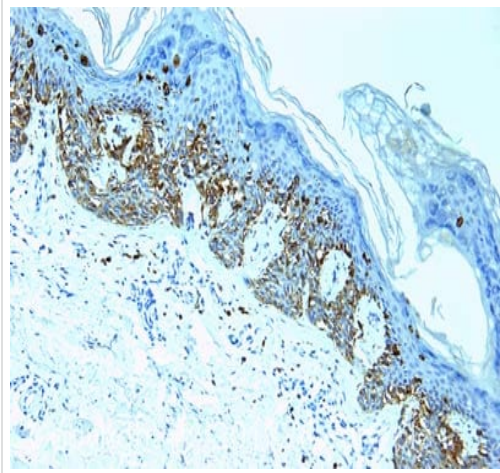
関連性

Malignant melanoma is a malignant neoplasm of melanocytes, arising de novo or from a pre-existing benign nevus, which occurs most often in the skin but also may involve other sites.

細胞内局在

Membrane; Single-pass membrane protein

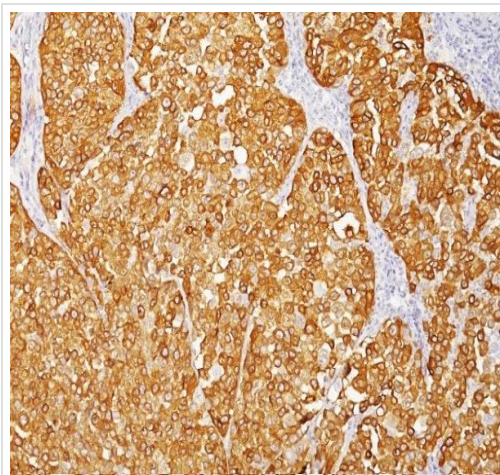
画像



Immunohistochemistry (Formalin/PFA-fixed paraffin-embedded sections) - Anti-Melanoma antibody [HMB45 + M2-7C10 + M2-9E3 + T311] (ab733)

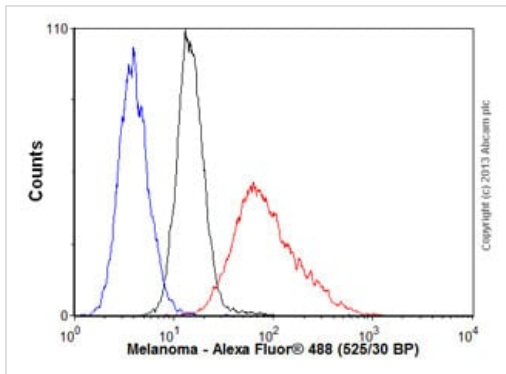
IHC image of ab733 staining in human melanoma formalin fixed paraffin embedded tissue section, performed on a Leica Bond™ system using the standard protocol F. The section was pre-treated using heat mediated antigen retrieval with sodium citrate buffer (pH6, epitope retrieval solution 1) for 20 mins. The section was then incubated with ab733, 5µg/ml, for 15 mins at room temperature and detected using an HRP conjugated compact polymer system. DAB was used as the chromogen. The section was then counterstained with haematoxylin and mounted with DPX.

For other IHC staining systems (automated and non-automated) customers should optimize variable parameters such as antigen retrieval conditions, primary antibody concentration and antibody incubation times.



Immunohistochemistry (Formalin/PFA-fixed paraffin-embedded sections) - Anti-Melanoma antibody [HMB45 + M2-7C10 + M2-9E3 + T311] (ab733)

ab733 staining human melanoma by Immunohistochemistry (IHC-P - paraformaldehyde-fixed, paraffin-embedded sections).



Flow Cytometry (Intracellular) - Anti-Melanoma antibody [HMB45 + M2-7C10 + M2-9E3 + T311] (ab733)

Overlay histogram showing MALME 3M cells stained with ab733 (red line). The cells were fixed with 80% methanol (5 min) and then permeabilized with 0.1% PBS-Tween for 20 min. The cells were then incubated in 1x PBS / 10% normal goat serum / 0.3M glycine to block non-specific protein-protein interactions followed by the antibody (ab733, 1/100 dilution) for 30 min at 22°C. The secondary antibody used was Alexa Fluor® 488 goat anti-mouse IgG (H&L) (**ab150113**) at 1/2000 dilution for 30 min at 22°C. Isotype control antibody (black line) was mouse IgG (1µg/1x10⁶ cells) used under the same conditions. Unlabelled sample (blue line) was also used as a control. Acquisition of >5,000 events were collected using a 20mW Argon ion laser (488nm) and 525/30 bandpass filter.

Please note: All products are "FOR RESEARCH USE ONLY. NOT FOR USE IN DIAGNOSTIC PROCEDURES"

Our Abpromise to you: Quality guaranteed and expert technical support

- Replacement or refund for products not performing as stated on the datasheet
- Valid for 12 months from date of delivery
- Response to your inquiry within 24 hours
- We provide support in Chinese, English, French, German, Japanese and Spanish
- Extensive multi-media technical resources to help you
- We investigate all quality concerns to ensure our products perform to the highest standards

If the product does not perform as described on this datasheet, we will offer a refund or replacement. For full details of the Abpromise, please visit <https://www.abcam.co.jp/abpromise> or contact our technical team.

Terms and conditions

- Guarantee only valid for products bought direct from Abcam or one of our authorized distributors