

Anti-MEK4/MKK4 antibody [2D10D8,4G11B2] ab60017

画像数 2

製品の概要

製品名	Anti-MEK4/MKK4 antibody [2D10D8,4G11B2]
製品の詳細	Mouse monoclonal [2D10D8,4G11B2] to MEK4/MKK4
由来種	Mouse
アプリケーション	適用あり: IHC-P
種交差性	交差種: Human
免疫原	Recombinant full length protein corresponding to MEK4/MKK4.
ポジティブ・コントロール	IHC-P: Human thymoma tissue or human spleen tissue.
特記事項	<p>The Life Science industry has been in the grips of a reproducibility crisis for a number of years. Abcam is leading the way in addressing this with our range of recombinant monoclonal antibodies and knockout edited cell lines for gold-standard validation. Please check that this product meets your needs before purchasing.</p> <p>If you have any questions, special requirements or concerns, please send us an inquiry and/or contact our Support team ahead of purchase. Recommended alternatives for this product can be found below, along with publications, customer reviews and Q&As</p>

製品の特性

製品の状態	Liquid
保存方法	Shipped at 4°C. Upon delivery aliquot and store at -20°C or -80°C. Avoid repeated freeze / thaw cycles.
バッファー	pH: 7.20 Constituent: PBS
精製度	Protein A purified
ポリ/モノ	モノクローナル
クローン名	2D10D8,4G11B2
アイソタイプ	IgM

アプリケーション

The Abpromise guarantee

Abpromise保証は、次のテスト済みアプリケーションにおけるab60017の使用に適用されます

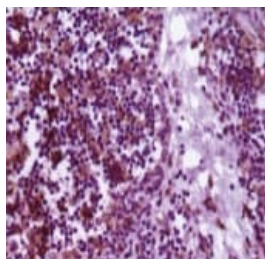
アプリケーションノートには、推奨の開始希釈率がありますが、適切な希釈率につきましてはご確認ください。

アプリケーション	Abreviews	特記事項
IHC-P		Use at an assay dependent concentration.

ターゲット情報

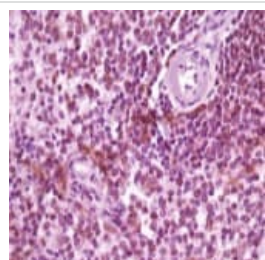
機能	Dual specificity kinase that activates the JUN kinases MAPK8 (JNK1) and MAPK9 (JNK2) as well as MAPK14 (p38) but not MAPK1 (ERK2) or MAPK3 (ERK1).
組織特異性	Abundant expression is seen in the skeletal muscle. It is also widely expressed in other tissues.
配列類似性	Belongs to the protein kinase superfamily. STE Ser/Thr protein kinase family. MAP kinase kinase subfamily. Contains 1 protein kinase domain.
翻訳後修飾	Activated by phosphorylation on Ser/Thr by MAP kinase kinase kinases.

画像



Ab60017 (1:500) staining human MKK4 in lymphocyte of human thymoma tissue by immunohistochemistry using paraffin embedded tissue. Cytoplasmic localization is shown using DAB staining.

Immunohistochemistry (Formalin/PFA-fixed paraffin-embedded sections) - Anti-MEK4/MKK4 antibody [2D10D8,4G11B2] (ab60017)



Ab60017 (1:500) staining human MKK4 in human spleen tissue by immunohistochemistry using paraffin embedded tissue. Cytoplasmic localization is shown using DAB staining.

Immunohistochemistry (Formalin/PFA-fixed paraffin-embedded sections) - Anti-MEK4/MKK4 antibody [2D10D8,4G11B2] (ab60017)

Please note: All products are "FOR RESEARCH USE ONLY. NOT FOR USE IN DIAGNOSTIC PROCEDURES"

Our Abpromise to you: Quality guaranteed and expert technical support

- Replacement or refund for products not performing as stated on the datasheet
- Valid for 12 months from date of delivery
- Response to your inquiry within 24 hours

- We provide support in Chinese, English, French, German, Japanese and Spanish
- Extensive multi-media technical resources to help you
- We investigate all quality concerns to ensure our products perform to the highest standards

If the product does not perform as described on this datasheet, we will offer a refund or replacement. For full details of the Abpromise, please visit <https://www.abcam.co.jp/abpromise> or contact our technical team.

Terms and conditions

- Guarantee only valid for products bought direct from Abcam or one of our authorized distributors