

Anti-MEK3 antibody [EP555Y] ab40836

KO 評価済 リコンビナント RabMAb

画像数 3

製品の概要

製品名	Anti-MEK3 antibody [EP555Y]
製品の詳細	Rabbit monoclonal [EP555Y] to MEK3
由来種	Rabbit
特異性	This antibody is specific for MEK3.
アプリケーション	適用あり: WB 適用なし: ICC/IF or IHC
種交差性	交差種: Human
免疫原	Synthetic peptide. This information is proprietary to Abcam and/or its suppliers.
ポジティブ・コントロール	Jurkat, Hela, MCF-7 and K562 cell lysate.
特記事項	<p>This product is a recombinant monoclonal antibody, which offers several advantages including:</p> <ul style="list-style-type: none"> - High batch-to-batch consistency and reproducibility - Improved sensitivity and specificity - Long-term security of supply - Animal-free production <p>For more information see here.</p> <p>Our RabMAb[®] technology is a patented hybridoma-based technology for making rabbit monoclonal antibodies. For details on our patents, please refer to RabMAb[®] patents.</p> <p>Mouse, Rat: We have preliminary internal testing data to indicate this antibody may not react with these species. Please contact us for more information.</p>

製品の特性

製品の状態	Liquid
保存方法	Shipped at 4°C. Upon delivery aliquot and store at -20°C. Avoid freeze / thaw cycles.
バッファー	pH: 7.20 Preservative: 0.01% Sodium azide Constituents: 9% PBS, 40% Glycerol (glycerin, glycerine), 0.05% BSA, 50% Tissue culture supernatant
精製度	Tissue culture supernatant

ポリ/モノ	モノクローナル
クローン名	EP555Y
アイソタイプ	IgG

アプリケーション

The Abpromise guarantee **Abpromise保証は、**次のテスト済みアプリケーションにおけるab40836の使用に適用されます
アプリケーションノートには、推奨の開始希釈率がありますが、適切な希釈率につきましてはご検討ください。

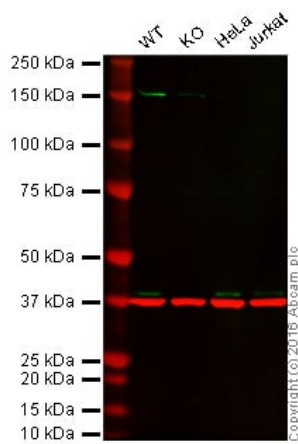
アプリケーション	Abreviews	特記事項
WB		1/5000 - 1/20000. Detects a band of approximately 40 kDa (predicted molecular weight: 39 kDa).

追加情報 Is unsuitable for ICC/IF or IHC.

ターゲット情報

機能	Dual specificity kinase. Is activated by cytokines and environmental stress in vivo. Catalyzes the concomitant phosphorylation of a threonine and a tyrosine residue in the MAP kinase p38.
組織特異性	Abundant expression is seen in the skeletal muscle. It is also widely expressed in other tissues.
関連疾患	Note=Defects in MAP2K3 may be involved in colon cancer.
配列類似性	Belongs to the protein kinase superfamily. STE Ser/Thr protein kinase family. MAP kinase kinase subfamily. Contains 1 protein kinase domain.
翻訳後修飾	Autophosphorylated. Phosphorylation on Ser-218 and Thr-222 by MAP kinase kinase kinases regulates positively the kinase activity. Yersinia yopJ may acetylate Ser/Thr residues, preventing phosphorylation and activation, thus blocking the MAPK signaling pathway.

画像



Western blot - Anti-MEK3 antibody [EP555Y]
(ab40836)

Lane 1: Wild-type HAP1 cell lysate (20 µg)

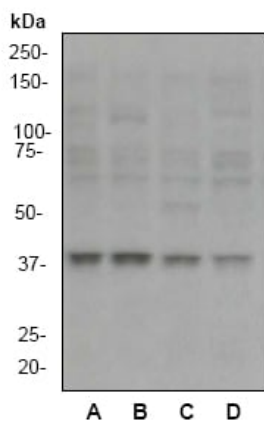
Lane 2: MEK3knockout HAP1 cell lysate (20 µg)

Lane 3: HeLa cell lysate (20 µg)

Lane 4: Jurkat cell lysate (20 µg)

Lanes 1 - 4: Merged signal (red and green). Green - ab40836 observed at 150 kDa. Red - loading control, [ab8245](#), observed at 37 kDa.

ab40836 was shown to recognize MEK3 when MEK3 knockout samples were used, along with additional cross-reactive bands. Wild-type and MEK3 knockout samples were subjected to SDS-PAGE. ab40836 and [ab8245](#) (loading control to GAPDH) were both diluted to 1/5000 and 1/10000 respectively and incubated overnight at 4°C. Blots were developed with Goat anti-Rabbit IgG H&L (IRDye® 800CW) preadsorbed [ab216773](#) and Goat anti-Mouse IgG H&L (IRDye® 680RD) preadsorbed [ab216776](#) secondary antibodies at 1/10000 dilution for 1 hour at room temperature before imaging.



Western blot - Anti-MEK3 antibody [EP555Y]
(ab40836)

All lanes : Anti-MEK3 antibody [EP555Y] (ab40836) at 1/20000 dilution

Lane 1 : Jurkat cell lysate

Lane 2 : Hela cell lysate

Lane 3 : MCF-7 cell lysate

Lane 4 : K562 cell lysate

Lysates/proteins at 10 µg per lane.

Predicted band size: 39 kDa

Observed band size: 40 kDa

Why choose a recombinant antibody?



Research with confidence
Consistent and reproducible results



Long-term and scalable supply
Recombinant technology



Success from the first experiment
Confirmed specificity



Ethical standards compliant
Animal-free production

Anti-MEK3 antibody [EP555Y] (ab40836)

Please note: All products are "FOR RESEARCH USE ONLY. NOT FOR USE IN DIAGNOSTIC PROCEDURES"

Our Abpromise to you: Quality guaranteed and expert technical support

- Replacement or refund for products not performing as stated on the datasheet
- Valid for 12 months from date of delivery
- Response to your inquiry within 24 hours
- We provide support in Chinese, English, French, German, Japanese and Spanish
- Extensive multi-media technical resources to help you
- We investigate all quality concerns to ensure our products perform to the highest standards

If the product does not perform as described on this datasheet, we will offer a refund or replacement. For full details of the Abpromise, please visit <https://www.abcam.co.jp/abpromise> or contact our technical team.

Terms and conditions

- Guarantee only valid for products bought direct from Abcam or one of our authorized distributors