


### Anti-MEIS1 antibody ab19867

★★★★☆ [3 Abreviews](#) [33 References](#) [画像数 3](#)

#### 製品の概要

製品名	Anti-MEIS1 antibody
製品の詳細	Rabbit polyclonal to MEIS1
由来種	Rabbit
特異性	From Mar 2024, QC testing of replenishment batches of this polyclonal changed. All tested and expected application and reactive species combinations are still covered by our Abcam product promise. However, we no longer test all applications. For more information on a specific batch, please contact our Scientific Support who will be happy to help.
アプリケーション	適用あり: IHC-P, WB
種交差性	交差種: Rat, Human 交差が予測される動物種: Mouse, Dog, Zebrafish 
免疫原	Synthetic peptide corresponding to Human MEIS1 aa 200-300 (internal sequence) conjugated to keyhole limpet haemocyanin.
ポジティブ・コントロール	This antibody gave a positive signal in the following nuclear cell extract: KG-1. This antibody gave a positive signal in the following FFPE tissue: Human tonsil, and Rat normal brain.
特記事項	<p>For a detailed method for MEIS1 ChIP-seq in RA-treated P19.6 cells, please see the protocol described by Dr Aurelien Serandour at <a href="http://www.ncbi.nlm.nih.gov/geo/query/acc.cgi?acc=GSM819083">http://www.ncbi.nlm.nih.gov/geo/query/acc.cgi?acc=GSM819083</a>.</p> <p>The Life Science industry has been in the grips of a reproducibility crisis for a number of years. Abcam is leading the way in addressing this with our range of recombinant monoclonal antibodies and knockout edited cell lines for gold-standard validation. Please check that this product meets your needs before purchasing.</p> <p>If you have any questions, special requirements or concerns, please send us an inquiry and/or contact our Support team ahead of purchase. Recommended alternatives for this product can be found below, along with publications, customer reviews and Q&amp;As</p>

#### 製品の特性

製品の状態	Liquid
保存方法	Shipped at 4°C. Store at +4°C short term (1-2 weeks). Upon delivery aliquot. Store at -20°C or -80°C. Avoid freeze / thaw cycle.
バッファー	pH: 7.40

Preservative: 0.02% Sodium azide  
Constituent: PBS

Batches of this product that have a concentration < 1mg/ml may have BSA added as a stabilising agent. If you would like information about the formulation of a specific lot, please contact our scientific support team who will be happy to help.

精製度 Immunogen affinity purified  
ポリモノ ポリクローナル  
アイソタイプ IgG

## アプリケーション

**The Abpromise guarantee** **Abpromise保証は、次のテスト済みアプリケーションにおけるab19867の使用に適用されます**  
アプリケーションノートには、推奨の開始希釈率がありますが、適切な希釈率につきましてはご検討ください。

アプリケーション	Abreviews	特記事項
IHC-P	★★★★☆ (1)	Use a concentration of 1 µg/ml. Perform heat mediated antigen retrieval before commencing with IHC staining protocol.
WB	★★★★☆ (1)	Use a concentration of 1 µg/ml. Detects a band of approximately 40, 48 kDa (predicted molecular weight: 43, 50 kDa). Abcam recommends using milk as the blocking agent.

## ターゲット情報

**機能** Acts as a transcriptional regulator of PAX6. Acts as a transcriptional activator of PF4 in complex with PBX1 or PBX2. Required for hematopoiesis, megakaryocyte lineage development and vascular patterning. May function as a cofactor for HOXA7 and HOXA9 in the induction of myeloid leukemias.

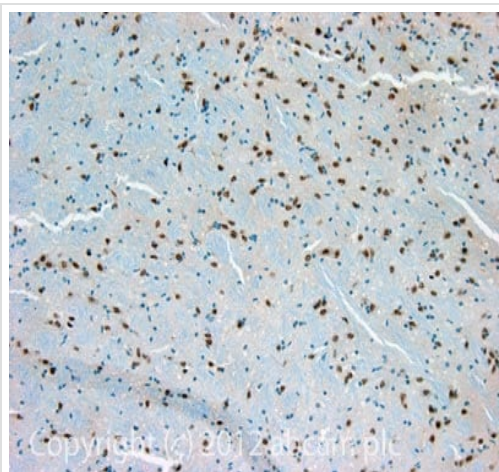
**組織特異性** Expressed at low level in normal immunohepatopoietic tissues, including the fetal liver. Expressed in a subset of myeloid leukemia cell lines, with the highest expression seen in those with a megakaryocytic-erythroid phenotype. Also expressed at high levels in the cerebellum.

**関連疾患** Defects in MEIS1 could be a cause of susceptibility to restless legs syndrome type 7 (RLS7) [MIM:612853]. Restless legs syndrome (RLS) is a neurologic sleep/wake disorder characterized by uncomfortable and unpleasant sensations in the legs that appear at rest, usually at night, inducing an irresistible desire to move the legs. The disorder results in nocturnal insomnia and chronic sleep deprivation.

**配列類似性** Belongs to the TALE/MEIS homeobox family.  
Contains 1 homeobox DNA-binding domain.

**細胞内局在** Nucleus.

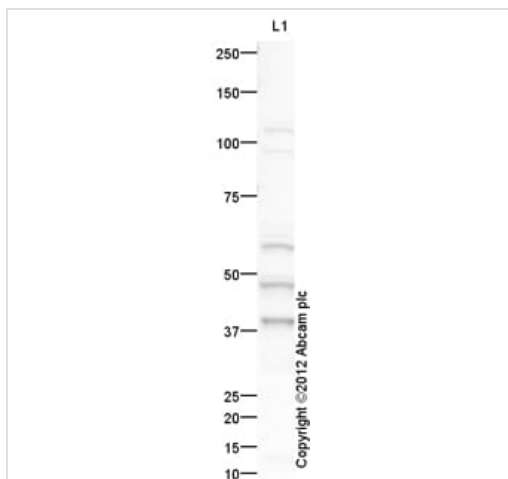
## 画像



Immunohistochemistry (Formalin/PFA-fixed paraffin-embedded sections) - Anti-MEIS1 antibody (ab19867)

IHC image of MEIS1 staining in Rat normal brain formalin fixed paraffin embedded tissue section, performed on a Leica Bond<sup>TM</sup> system using the standard protocol F. The section was pre-treated using heat mediated antigen retrieval with sodium citrate buffer (pH6, epitope retrieval solution 1) for 20 mins. The section was then incubated with ab19867, 0.5µg/ml, for 15 mins at room temperature and detected using an HRP conjugated compact polymer system. DAB was used as the chromogen. The section was then counterstained with haematoxylin and mounted with DPX.

For other IHC staining systems (automated and non-automated) customers should optimize variable parameters such as antigen retrieval conditions, primary antibody concentration and antibody incubation times.



Western blot - Anti-MEIS1 antibody (ab19867)

Anti-MEIS1 antibody (ab19867) at 1 µg/ml (blocked with 5% milk) + KG-1 (Human myeloid cell line) Nuclear Lysate at 15 µg

#### Secondary

Goat Anti-Rabbit IgG H&L (HRP) preadsorbed ([ab97080](#)) at 1/5000 dilution

Performed under reducing conditions.

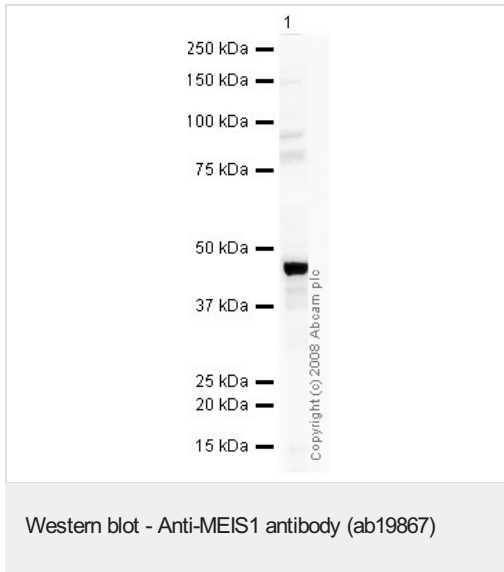
**Predicted band size:** 43, 50 kDa

**Observed band size:** 40,48 kDa

**Additional bands at:** 58 kDa. We are unsure as to the identity of these extra bands.

**Exposure time:** 12 minutes

This antibody was raised against an immunogen that is predicted to recognize isoforms 1 and 2 of MEIS1. The predicted molecular weights of isoforms 1 and 2 are 43 kDa and 50 kDa respectively. Abcam recommends using milk as the blocking agent. Abcam welcomes customer feedback and would appreciate any comments regarding this product and the data presented above.



Anti-MEIS1 antibody (ab19867) at 1 µg/ml + HEK293 Wcl  
Transiently Overexpressing MEIS1 at 5 µg

#### Secondary

Goat polyclonal to Rabbit IgG - H&L - Pre-Adsorbed (HRP)  
([ab65484](#)) at 1/3000 dilution

Performed under reducing conditions.

**Predicted band size:** 43, 50 kDa

**Observed band size:** 45 kDa

**Please note:** All products are "FOR RESEARCH USE ONLY. NOT FOR USE IN DIAGNOSTIC PROCEDURES"

#### Our Abpromise to you: Quality guaranteed and expert technical support

---

- Replacement or refund for products not performing as stated on the datasheet
- Valid for 12 months from date of delivery
- Response to your inquiry within 24 hours
- We provide support in Chinese, English, French, German, Japanese and Spanish
- Extensive multi-media technical resources to help you
- We investigate all quality concerns to ensure our products perform to the highest standards

If the product does not perform as described on this datasheet, we will offer a refund or replacement. For full details of the Abpromise, please visit <https://www.abcam.co.jp/abpromise> or contact our technical team.

#### Terms and conditions

---

- Guarantee only valid for products bought direct from Abcam or one of our authorized distributors