

Anti-MEF2C antibody [OTI4B10] ab118406

1 References [画像数 4](#)

製品の概要

製品名	Anti-MEF2C antibody [OTI4B10]
製品の詳細	Mouse monoclonal [OTI4B10] to MEF2C
由来種	Mouse
アプリケーション	適用あり: WB, ICC/IF, Flow Cyt (Intra)
種交差性	交差種: Human, Recombinant fragment
免疫原	Recombinant full length protein corresponding to Human MEF2C.
ポジティブ・コントロール	WB:HEK293T cell lysate transfected with pCMV6-ENTRY MEF2C cDNA; ICC/IF: COS7 cells transiently transfected by pCMV6-ENTRY MEF2C; Flow Cyt (Intra): HeLa and Jurkat cells.
特記事項	<p>The clone number has been updated from 4B10 to OTI4B10, both clone numbers name the same clone.</p> <p>The Life Science industry has been in the grips of a reproducibility crisis for a number of years. Abcam is leading the way in addressing this with our range of recombinant monoclonal antibodies and knockout edited cell lines for gold-standard validation. Please check that this product meets your needs before purchasing.</p> <p>If you have any questions, special requirements or concerns, please send us an inquiry and/or contact our Support team ahead of purchase. Recommended alternatives for this product can be found below, along with publications, customer reviews and Q&As</p>

製品の特性

製品の状態	Liquid
保存方法	Shipped at 4°C. Upon delivery aliquot and store at -20°C. Avoid repeated freeze / thaw cycles.
バッファー	<p>pH: 7.30</p> <p>Preservative: 0.02% Sodium azide</p> <p>Constituents: 50% Glycerol, 1% BSA, PBS</p>
精製度	Protein G purified
特記事項 (精製)	Purified from cell culture supernatant by affinity chromatography
ポリ/モノ	モノクローナル
クローン名	OTI4B10
アイソタイプ	IgG1

アプリケーション

The Abpromise guarantee **Abpromise保証は、次のテスト済みアプリケーションにおけるab118406の使用に適用されます**
アプリケーションノートには、推奨の開始希釈率がありますが、適切な希釈率につきましてはご検討ください。

アプリケーション	Abreviews	特記事項
WB		1/500. Predicted molecular weight: 51 kDa.
ICC/IF		1/100.
Flow Cyt (Intra)		1/100. ab170190 - Mouse monoclonal IgG1, is suitable for use as an isotype control with this antibody.

ターゲット情報

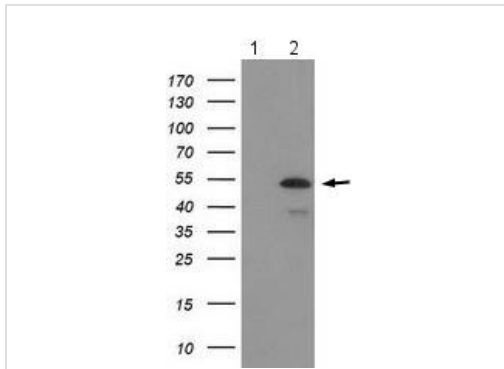
機能	Transcription activator which binds specifically to the MEF2 element present in the regulatory regions of many muscle-specific genes. Controls cardiac morphogenesis and myogenesis, and is also involved in vascular development. Plays an essential role in hippocampal-dependent learning and memory by suppressing the number of excitatory synapses and thus regulating basal and evoked synaptic transmission. Crucial for normal neuronal development, distribution, and electrical activity in the neocortex. Necessary for proper development of megakaryocytes and platelets and for bone marrow B lymphopoiesis. Required for B-cell survival and proliferation in response to BCR stimulation, efficient IgG1 antibody responses to T-cell-dependent antigens and for normal induction of germinal center B cells. May also be involved in neurogenesis and in the development of cortical architecture (By similarity). Isoform 3 and isoform 4, which lack the repressor domain, are more active than isoform 1 and isoform 2.
組織特異性	Expressed in brain and skeletal muscle.
関連疾患	Defects in MEF2C are the cause of mental retardation-stereotypic movements-epilepsy and/or cerebral malformations (MRSME) [MIM:613443]. It is a disorder characterized by severe mental retardation, absent speech, hypotonia, poor eye contact and stereotypic movements. Dysmorphic features include high broad forehead with variable small chin, short nose with anteverted nares, large open mouth, upslanted palpebral fissures and prominent eyebrows. Some patients have seizures.
配列類似性	Belongs to the MEF2 family. Contains 1 MADS-box domain. Contains 1 Mef2-type DNA-binding domain.
発生段階	Expression is highest during the early stages of postnatal development, at later stages levels greatly decrease.
ドメイン	The beta domain, missing in a number of isoforms, is required for enhancement of transcriptional activity.
翻訳後修飾	Phosphorylation on Ser-59 enhances DNA binding activity (By similarity). Phosphorylation on Ser-396 is required for Lys-391 sumoylation and inhibits transcriptional activity. Acetylated by p300 on several sites in differentiating myocytes. Acetylation on Lys-4 increases DNA binding and transactivation. Sumoylated on Lys-391 by SUMO2 but not by SUMO1 represses transcriptional activity.

Proteolytically cleaved in cerebellar granule neurons, probably by caspase 7, following neurotoxicity. Preferentially cleaves the CDK5-mediated hyperphosphorylated form which leads to neuron apoptosis and transcriptional inactivation.

細胞内局在

Nucleus.

画像



Western blot - Anti-MEF2C antibody [OTI4B10] (ab118406)

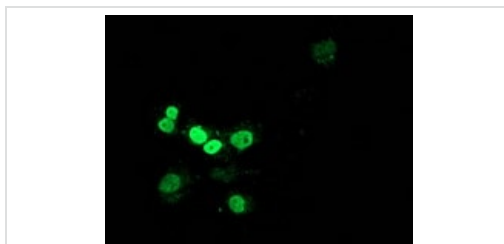
All lanes : Anti-MEF2C antibody [OTI4B10] (ab118406) at 1/500 dilution

Lane 1 : HEK293T cell lysate transfected with pCMV6-ENTRY control cDNA

Lane 2 : HEK293T cell lysate transfected with pCMV6-ENTRY MEF2C cDNA

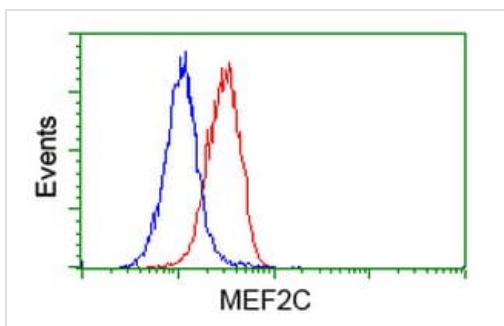
Lysates/proteins at 5 µg per lane.

Predicted band size: 51 kDa



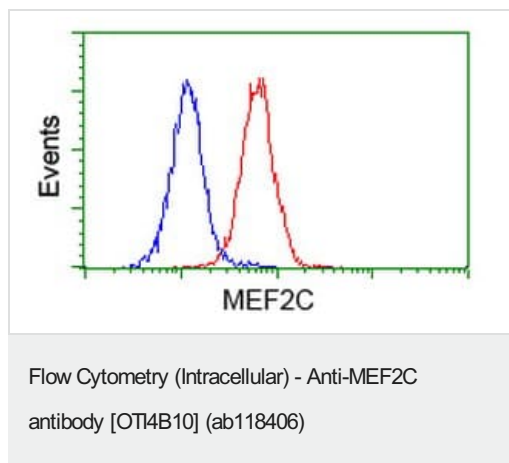
Immunocytochemistry/ Immunofluorescence - Anti-MEF2C antibody [OTI4B10] (ab118406)

ab118406 at 1/100 dilution staining MEF2C in COS7 cells transiently transfected by pCMV6-ENTRY MEF2C by Immunofluorescence.



Flow Cytometry (Intracellular) - Anti-MEF2C antibody [OTI4B10] (ab118406)

ab118406 at 1/100 dilution staining MEF2C in HeLa cells by Flow cytometry (Intracellular) (Red) compared to a nonspecific negative control antibody (Blue).



ab118406 at 1/100 dilution staining MEF2C in Jurkat cells by Flow cytometry (Intracellular) (Red) compared to a nonspecific negative control antibody (Blue).

Please note: All products are "FOR RESEARCH USE ONLY. NOT FOR USE IN DIAGNOSTIC PROCEDURES"

Our Abpromise to you: Quality guaranteed and expert technical support

- Replacement or refund for products not performing as stated on the datasheet
- Valid for 12 months from date of delivery
- Response to your inquiry within 24 hours
- We provide support in Chinese, English, French, German, Japanese and Spanish
- Extensive multi-media technical resources to help you
- We investigate all quality concerns to ensure our products perform to the highest standards

If the product does not perform as described on this datasheet, we will offer a refund or replacement. For full details of the Abpromise, please visit <https://www.abcam.co.jp/abpromise> or contact our technical team.

Terms and conditions

- Guarantee only valid for products bought direct from Abcam or one of our authorized distributors