


Anti-MED13L antibody ab87831

1 References [画像数 3](#)

製品の概要

製品名	Anti-MED13L antibody
製品の詳細	Rabbit polyclonal to MED13L
由来種	Rabbit
アプリケーション	適用あり: WB, IP, IHC-P
種交差性	交差種: Human 交差が予測される動物種: Rat, Rabbit, Horse, Guinea pig, Dog, Chimpanzee, Ferret, Rhesus monkey, Orangutan, Elephant 
免疫原	Synthetic peptide within Human MED13L aa 550-600. The exact sequence is proprietary. (GeneID 23389). Database link: NP_056150.1
ポジティブ・コントロール	Whole cell lysate from HeLa cells
特記事項	<p>The Life Science industry has been in the grips of a reproducibility crisis for a number of years. Abcam is leading the way in addressing this with our range of recombinant monoclonal antibodies and knockout edited cell lines for gold-standard validation. Please check that this product meets your needs before purchasing.</p> <p>If you have any questions, special requirements or concerns, please send us an inquiry and/or contact our Support team ahead of purchase. Recommended alternatives for this product can be found below, along with publications, customer reviews and Q&As</p>

製品の特性

製品の状態	Liquid
保存方法	Shipped at 4°C. Upon delivery aliquot and store at -20°C. Avoid freeze / thaw cycles.
バッファー	pH: 7 Preservative: 0.09% Sodium azide Constituent: Tris citrate/phosphate
精製度	Immunogen affinity purified
特記事項(精製)	Antibody was affinity purified using an epitope specific to MED13L immobilized on solid support.
ポリ/モノ	ポリクローナル
アイソタイプ	IgG

アプリケーション

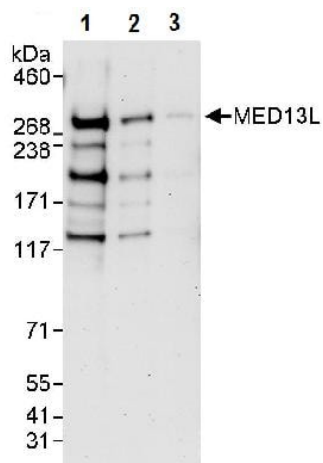
The Abpromise guarantee Abpromise保証は、次のテスト済みアプリケーションにおけるab87831の使用に適用されます
アプリケーションノートには、推奨の開始希釈率がありますが、適切な希釈率につきましてはご確認ください。

アプリケーション	Abreviews	特記事項
WB		1/2000 - 1/10000. Predicted molecular weight: 243 kDa.
IP		Use at 2-5 µg/mg of lysate.
IHC-P		1/500 - 1/2000. Perform heat mediated antigen retrieval with citrate buffer pH 6 before commencing with IHC staining protocol.

ターゲット情報

機能	Component of the Mediator complex, a coactivator involved in the regulated transcription of nearly all RNA polymerase II-dependent genes. Mediator functions as a bridge to convey information from gene-specific regulatory proteins to the basal RNA polymerase II transcription machinery. Mediator is recruited to promoters by direct interactions with regulatory proteins and serves as a scaffold for the assembly of a functional preinitiation complex with RNA polymerase II and the general transcription factors. This subunit may specifically regulate transcription of targets of the Wnt signaling pathway and SHH signaling pathway.
組織特異性	Highly expressed in brain (cerebellum), heart (aorta), skeletal muscle, kidney, placenta and peripheral blood leukocytes. Highly expressed in fetal brain.
関連疾患	Defects in MED13L are a cause of transposition of the great arteries, dextro-looped (DTGA) [MIM:608808]. DTGA consists of complete inversion of the great vessels, so that the aorta incorrectly arises from the right ventricle and the pulmonary artery incorrectly arises from the left ventricle. This creates completely separate pulmonary and systemic circulatory systems, an arrangement that is incompatible with life. Patients often have atrial and/or ventricular septal defects or other types of shunting that allow some mixing between the circulations in order to support life minimally, but surgical intervention is always required. Note=A chromosomal aberration involving MED13L is found in a patient with transposition of the great arteries, dextro-looped and mental retardation. Translocation t(12;17)(q24.1;q21).
配列類似性	Belongs to the Mediator complex subunit 13 family.
翻訳後修飾	Phosphorylated upon DNA damage, probably by ATM or ATR.
細胞内局在	Nucleus.

画像



Western blot - Anti-MED13L antibody (ab87831)

All lanes : Anti-MED13L antibody (ab87831) at 0.1 µg/ml

Lane 1 : HeLa whole cell lysate at 50 µg/ml

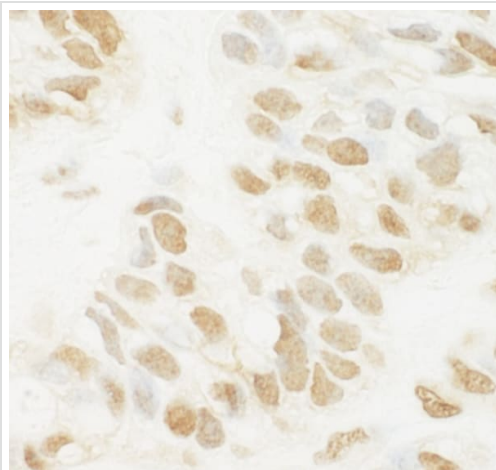
Lane 2 : HeLa whole cell lysate at 15 µg/ml

Lane 3 : HeLa whole cell lysate at 5 µg/ml

Developed using the ECL technique.

Predicted band size: 243 kDa

Exposure time: 3 minutes



Immunohistochemistry (Formalin/PFA-fixed paraffin-embedded sections) - Anti-MED13L antibody (ab87831)

Immunohistochemistry (Formalin/PFA-fixed paraffin-embedded sections) analysis of human breast carcinoma tissue labelling MED13L with ab87831 at 1/1000 (1µg/ml). Detection: DAB.



Immunoprecipitation - Anti-MED13L antibody
(ab87831)

Detection of MED13L by Immunoprecipitation in whole cell lysate from HeLa cells (1 mg for IP, 20% of IP loaded), using ab87831 at 3 µg/mg lysate for IP and at 1 µg/ml for subsequent WB detection. Chemiluminescence with an exposure time of 30 seconds.

Lane 1 : Anti-MED13L antibody (ab87831) at 1 µg/ml ((and used for IP at 3ug/mg lysate))

Lane 2 : Anti-MED13L antibody (ab87831) at 1 µg/ml (For IP: Rabbit anti-MED13L antibody only (which recognizes a downstream epitope))

Lane 3 : Anti-MED13L antibody (ab87831) at 1 µg/ml (For IP: Control IgG only)

Lane 1 : For WB: HeLa whole cell lysate at 50ug. For IP: HeLa whole cell lysate (1mg for IP, 20% of IP loaded)

Lane 2 : For WB: HeLa whole cell lysate at 15ug. For IP: HeLa whole cell lysate (1mg for IP, 20% of IP loaded)

Lane 3 : For WB: HeLa whole cell lysate at 5ug. For IP: HeLa whole cell lysate (1mg for IP, 20% of IP loaded)

Developed using the ECL technique.

Exposure time: 30 seconds

Please note: All products are "FOR RESEARCH USE ONLY. NOT FOR USE IN DIAGNOSTIC PROCEDURES"

Our Abpromise to you: Quality guaranteed and expert technical support

- Replacement or refund for products not performing as stated on the datasheet
- Valid for 12 months from date of delivery
- Response to your inquiry within 24 hours
- We provide support in Chinese, English, French, German, Japanese and Spanish
- Extensive multi-media technical resources to help you
- We investigate all quality concerns to ensure our products perform to the highest standards

If the product does not perform as described on this datasheet, we will offer a refund or replacement. For full details of the Abpromise, please visit <https://www.abcam.co.jp/abpromise> or contact our technical team.

Terms and conditions

- Guarantee only valid for products bought direct from Abcam or one of our authorized distributors