

# Anti-MED13/GCT antibody ab76923

**4 References**   [画像数 2](#)

### 製品の概要

製品名	Anti-MED13/GCT antibody
製品の詳細	Rabbit polyclonal to MED13/GCT
由来種	Rabbit
アプリケーション	<b>適用あり:</b> WB, IP
種交差性	<b>交差種:</b> Human <b>交差が予測される動物種:</b> Chimpanzee, Gorilla 
免疫原	Synthetic peptide within Human MED13/GCT aa 300-400. The exact immunogen sequence used to generate this antibody is proprietary information. If additional detail on the immunogen is needed to determine the suitability of the antibody for your needs, please <b><u>contact</u></b> our Scientific Support team to discuss your requirements. NP_005112.2 Database link: <a href="#">Q9UHV7</a>
ポジティブ・コントロール	HeLa and 293T whole cell lysates.
特記事項	<p>The Life Science industry has been in the grips of a reproducibility crisis for a number of years. Abcam is leading the way in addressing this with our range of recombinant monoclonal antibodies and knockout edited cell lines for gold-standard validation. Please check that this product meets your needs before purchasing.</p> <p>If you have any questions, special requirements or concerns, please send us an inquiry and/or contact our Support team ahead of purchase. Recommended alternatives for this product can be found below, along with publications, customer reviews and Q&amp;As</p>

### 製品の特性

製品の状態	Liquid
保存方法	Shipped at 4°C. Upon delivery aliquot and store at -20°C. Avoid freeze / thaw cycles.
バッファー	pH: 6.8 Preservative: 0.09% Sodium azide Constituents: 0.1% BSA, Tris buffered saline
精製度	Immunogen affinity purified
ポリ/モノ	ポリクローナル
アイソタイプ	IgG

## アプリケーション

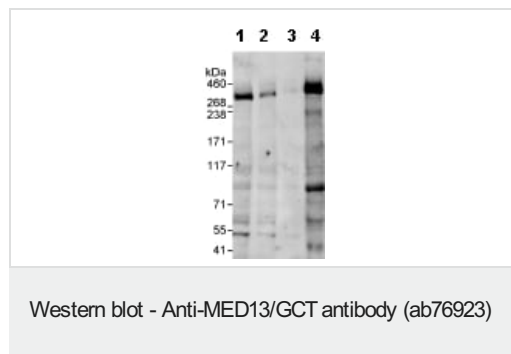
**The Abpromise guarantee**      Abpromise保証は、次のテスト済みアプリケーションにおけるab76923の使用に適用されます  
アプリケーションノートには、推奨の開始希釈率がありますが、適切な希釈率につきましてはご確認ください。

アプリケーション	Abreviews	特記事項
WB		1/2000 - 1/10000. Predicted molecular weight: 240 kDa.
IP		Use at 2-5 µg/mg of lysate.

## ターゲット情報

関連性	MED13 is a member of the mediator complex that can act as both a positive and negative regulator of transcription. The mediator complex interacts with RNA pol II and its associated proteins, the general transcription factors. Mediator proteins serve as a bridge connecting the activator and basal transcription machinery.
細胞内局在	Nuclear

## 画像



**All lanes :** Anti-MED13/GCT antibody (ab76923) at 0.04 µg/ml

**Lane 1 :** HeLa whole cell lysate at 50 µg

**Lane 2 :** HeLa whole cell lysate at 15 µg

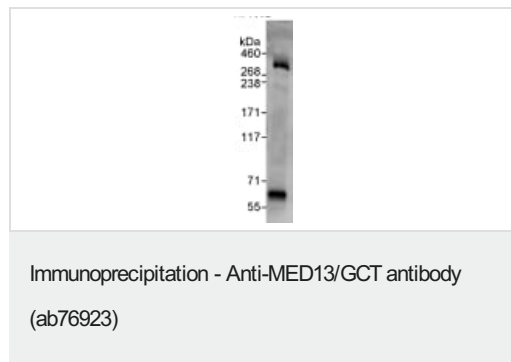
**Lane 3 :** HeLa whole cell lysate at 5 µg

**Lane 4 :** 293T whole cell lysate at 50 µg

**Predicted band size:** 240 kDa

**Observed band size:** 300 kDa

**Exposure time:** 3 minutes



Detection of MED13/GCT by Western Blot of Immunoprecipitate.  
ab76923 at 1µg/ml staining MED13/GCT in HeLa whole cell lysate immunoprecipitated using ab76923 at 3µg/mg lysate (1 mg/IP; 20% of IP loaded/lane).  
Detection: Chemiluminescence with exposure time of 30 seconds.

**Please note:** All products are "FOR RESEARCH USE ONLY. NOT FOR USE IN DIAGNOSTIC PROCEDURES"

### **Our Abpromise to you: Quality guaranteed and expert technical support**

---

- Replacement or refund for products not performing as stated on the datasheet
- Valid for 12 months from date of delivery
- Response to your inquiry within 24 hours
  
- We provide support in Chinese, English, French, German, Japanese and Spanish
- Extensive multi-media technical resources to help you
- We investigate all quality concerns to ensure our products perform to the highest standards

If the product does not perform as described on this datasheet, we will offer a refund or replacement. For full details of the Abpromise, please visit <https://www.abcam.co.jp/abpromise> or contact our technical team.

### **Terms and conditions**

---

- Guarantee only valid for products bought direct from Abcam or one of our authorized distributors