


### Anti-MDC1 antibody ab11169

★★★★★ [8 Abreviews](#) [42 References](#) [画像数 1](#)

#### 製品の概要

製品名	Anti-MDC1 antibody
製品の詳細	Rabbit polyclonal to MDC1
由来種	Rabbit
アプリケーション	<b>適用あり:</b> ICC/IF, WB
種交差性	<b>交差種:</b> Human <b>交差が予測される動物種:</b> Chimpanzee, Rhesus monkey, Gorilla 
免疫原	Synthetic peptide corresponding to Human MDC1 aa 450-550. Database link: <a href="#">9656</a>
ポジティブ・コントロール	Tested with HeLa cells and HEK 293 cells.
特記事項	<p>In response to recent feedback about mouse species we no longer guarantee this anymore. Please do contact our scientific support team for more information.</p> <p>The Life Science industry has been in the grips of a reproducibility crisis for a number of years. Abcam is leading the way in addressing this with our range of recombinant monoclonal antibodies and knockout edited cell lines for gold-standard validation. Please check that this product meets your needs before purchasing.</p> <p>If you have any questions, special requirements or concerns, please send us an inquiry and/or contact our Support team ahead of purchase. Recommended alternatives for this product can be found below, along with publications, customer reviews and Q&amp;As</p>

#### 製品の特性

製品の状態	Liquid
保存方法	Shipped at 4°C. Upon delivery aliquot and store at -20°C. Avoid freeze / thaw cycles.
バッファー	pH: 7 Preservative: 0.1% Sodium azide Constituents: 0.021% PBS, 1.764% Sodium citrate, 1.815% Tris
精製度	Immunogen affinity purified
特記事項(精製)	Antibodies were affinity purified using the peptide immobilized on solid support.
ポリ/モノ	ポリクローナル
アイソタイプ	IgG

## アプリケーション

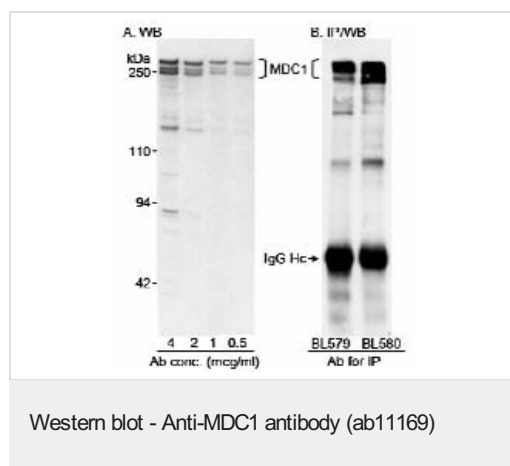
**The Abpromise guarantee**      **Abpromise保証は、次のテスト済みアプリケーションにおけるab11169の使用に適用されます**  
アプリケーションノートには、推奨の開始希釈率がありますが、適切な希釈率につきましてはご検討ください。

アプリケーション	Abreviews	特記事項
ICC/IF	★★★★★ (3)	Use at an assay dependent concentration.
WB	★★★★★ (4)	1/500 - 1/2500. Detects a band of approximately 250 kDa (predicted molecular weight: 220 kDa).

## ターゲット情報

機能	Required for checkpoint mediated cell cycle arrest in response to DNA damage within both the S phase and G2/M phases of the cell cycle. May serve as a scaffold for the recruitment of DNA repair and signal transduction proteins to discrete foci of DNA damage marked by 'Ser-139' phosphorylation of histone H2AFX. Also required for downstream events subsequent to the recruitment of these proteins. These include phosphorylation and activation of the ATM, CHEK1/CHK1 and CHEK2/CHK2/CDS1 kinases, and stabilization of TP53 and apoptosis. ATM and CHEK2 may also be activated independently by a parallel pathway mediated by TP53BP1.
組織特異性	Highly expressed in testis.
配列類似性	Contains 2 BRCT domains. Contains 1 FHA domain.
ドメイン	Tandemly repeated BRCT domains are characteristic of proteins involved in DNA damage signaling. In MDC1, these repeats are required for localization to chromatin which flanks sites of DNA damage marked by 'Ser-139' phosphorylation of H2AFX.
翻訳後修飾	Phosphorylated upon exposure to ionizing radiation (IR), ultraviolet radiation (UV), and hydroxyurea (HU). Phosphorylation in response to IR requires ATM, NBN, and possibly CHEK2. Also phosphorylated during the G2/M phase of the cell cycle and during activation of the mitotic spindle checkpoint.
細胞内局在	Nucleus. Associated with chromatin. Relocalizes to discrete nuclear foci following DNA damage, this requires 'Ser-139' phosphorylation of H2AFX. Colocalizes with APTX at sites of DNA double-strand breaks.

## 画像



#### Samples:

A) Nuclear extract (50 mcg) from HeLa cells. B) Whole cell lysate from HEK 293 cells. **Antibodies:** A) ab11169 used at the indicated concentrations for WB. B) **ab11170** (column labelled BL579) and **ab11171** (column labelled BL580) (a ) used at 3.3 mcg/mg lysate for IP followed by WB using ab11169 at 0.1 mcg/ml. **Detection:** Chemiluminescence with exposure times less than 5 min. **Samples:** A) Nuclear extract (50 mcg) from HeLa cells. B) Whole cell lysate from HEK 293 cells. **Antibodies:** A) ab11169 used at the indicated concentrations for WB. B) **ab11170** (column labelled BL579) and **ab11171** (column labelled BL580) (a ) used at 3.3 mcg/mg lysate for IP followed by WB using ab11169 at 0.1 mcg/ml. **Detection:** Chemiluminescence with exposure times less than 5 min.

**Please note:** All products are "FOR RESEARCH USE ONLY. NOT FOR USE IN DIAGNOSTIC PROCEDURES"

#### Our Abpromise to you: Quality guaranteed and expert technical support

- Replacement or refund for products not performing as stated on the datasheet
- Valid for 12 months from date of delivery
- Response to your inquiry within 24 hours
- We provide support in Chinese, English, French, German, Japanese and Spanish
- Extensive multi-media technical resources to help you
- We investigate all quality concerns to ensure our products perform to the highest standards

If the product does not perform as described on this datasheet, we will offer a refund or replacement. For full details of the Abpromise, please visit <https://www.abcam.co.jp/abpromise> or contact our technical team.

#### Terms and conditions

- Guarantee only valid for products bought direct from Abcam or one of our authorized distributors