

Anti-MCP1 antibody ab7202

★★★★★ [2 Abreviews](#) [99 References](#) [画像数 2](#)

製品の概要

製品名	Anti-MCP1 antibody
製品の詳細	Rabbit polyclonal to MCP1
由来種	Rabbit
アプリケーション	適用あり: ICC/IF, IHC-P, IHC-Fr, WB, Neutralising
種交差性	交差種: Mouse, Rat
免疫原	Recombinant full length protein corresponding to Rat MCP1. Database link: P14844
ポジティブ・コントロール	IHC-P: LPS-treated rat lung tissue.
特記事項	<p>The Life Science industry has been in the grips of a reproducibility crisis for a number of years. Abcam is leading the way in addressing this with our range of recombinant monoclonal antibodies and knockout edited cell lines for gold-standard validation. Please check that this product meets your needs before purchasing.</p> <p>If you have any questions, special requirements or concerns, please send us an inquiry and/or contact our Support team ahead of purchase. Recommended alternatives for this product can be found below, along with publications, customer reviews and Q&As</p>

製品の特性

製品の状態	Liquid
保存方法	Shipped at 4°C. Store at +4°C short term (1-2 weeks). Upon delivery aliquot. Store at -20°C or -80°C. Avoid freeze / thaw cycle.
バッファー	pH: 6.50 Preservative: 0.1% Sodium azide Constituent: PBS
精製度	Protein A purified
ポリ/モノ	ポリクローナル
アイソタイプ	IgG

アプリケーション

The Abpromise guarantee

Abpromise保証は、次のテスト済みアプリケーションにおけるab7202の使用に適用されます

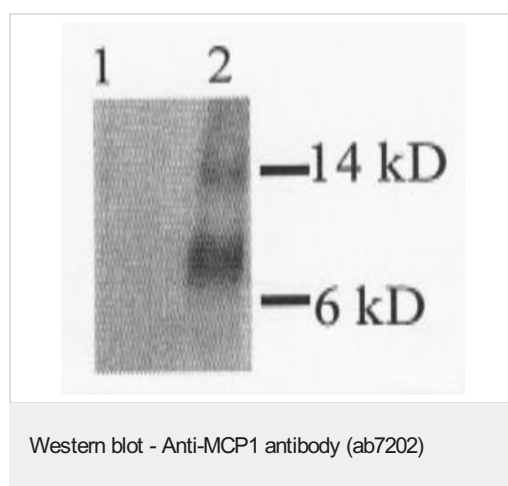
アプリケーションノートには、推奨の開始希釈率がありますが、適切な希釈率につきましてはご検討ください。

アプリケーション	Abreviews	特記事項
ICC/IF		Use at an assay dependent concentration.
IHC-P		1/300.
IHC-Fr	★★★★★ (1)	Use at an assay dependent concentration. PubMed: 21088249
WB	★★★★★ (1)	1/2000. Predicted molecular weight: 18 kDa.
Neutralising		Use at an assay dependent concentration.

ターゲット情報

機能	Chemotactic factor that attracts monocytes and basophils but not neutrophils or eosinophils. Augments monocyte anti-tumor activity. Has been implicated in the pathogenesis of diseases characterized by monocytic infiltrates, like psoriasis, rheumatoid arthritis or atherosclerosis. May be involved in the recruitment of monocytes into the arterial wall during the disease process of atherosclerosis.
配列類似性	Belongs to the intercrine beta (chemokine CC) family.
翻訳後修飾	Processing at the N-terminus can regulate receptor and target cell selectivity. Deletion of the N-terminal residue converts it from an activator of basophil to an eosinophil chemoattractant.
細胞内局在	Secreted.

画像



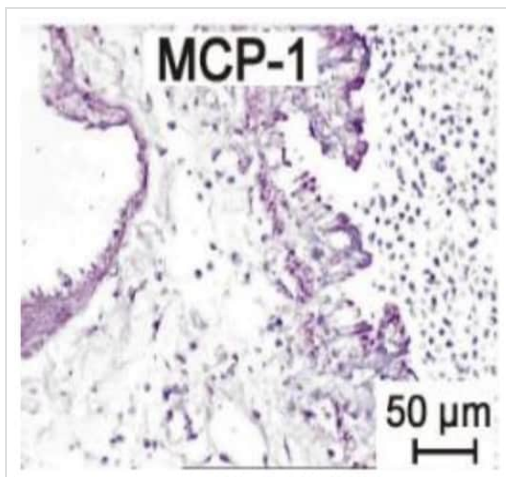
All lanes : Anti-MCP1 antibody (ab7202)

Lane 1 : LPS-stimulated RAW cell lysate

Lane 2 : Rat MCP1-transfected RAW cell lysate

Predicted band size: 18 kDa

Western blot analysis of RAW cell lysates labelling MCP1 with ab7202.



Immunohistochemical analysis of paraffin-embedded LPS-treated rat lung tissue stained for MCP1 using ab7202 at 1/300 dilution.

Immunohistochemistry (Formalin/PFA-fixed paraffin-embedded sections) - Anti-MCP1 antibody (ab7202)

Please note: All products are "FOR RESEARCH USE ONLY. NOT FOR USE IN DIAGNOSTIC PROCEDURES"

Our Abpromise to you: Quality guaranteed and expert technical support

- Replacement or refund for products not performing as stated on the datasheet
- Valid for 12 months from date of delivery
- Response to your inquiry within 24 hours
- We provide support in Chinese, English, French, German, Japanese and Spanish
- Extensive multi-media technical resources to help you
- We investigate all quality concerns to ensure our products perform to the highest standards

If the product does not perform as described on this datasheet, we will offer a refund or replacement. For full details of the Abpromise, please visit <https://www.abcam.co.jp/abpromise> or contact our technical team.

Terms and conditions

- Guarantee only valid for products bought direct from Abcam or one of our authorized distributors