

Anti-MCM5 antibody [EP2683Y] ab75975

リコンビナント **RabMAb**

★★★★★ **1 Abreviews** **13 References** 画像数 5

製品の概要

製品名	Anti-MCM5 antibody [EP2683Y]
製品の詳細	Rabbit monoclonal [EP2683Y] to MCM5
由来種	Rabbit
アプリケーション	適用あり: Flow Cyt (Intra), ICC/IF, IP, WB, IHC-P
種交差性	交差種: Mouse, Human
免疫原	Synthetic peptide. This information is proprietary to Abcam and/or its suppliers.
ポジティブ・コントロール	WB: MCF7 cell lysate. Mouse spleen lysate; IHC-P: Human tonsil tissue; Flow Cyt (intra): MCF7 cells; ICC/IF: MCF7 cells.
特記事項	<p>This product is a recombinant monoclonal antibody, which offers several advantages including:</p> <ul style="list-style-type: none"> - High batch-to-batch consistency and reproducibility - Improved sensitivity and specificity - Long-term security of supply - Animal-free production <p>For more information see here.</p> <p>Our RabMAb[®] technology is a patented hybridoma-based technology for making rabbit monoclonal antibodies. For details on our patents, please refer to RabMAb[®] patents.</p> <p>Rat: We have preliminary internal testing data to indicate this antibody may not react with this species. Please contact us for more information.</p>

製品の特性

製品の状態	Liquid
保存方法	Shipped at 4°C. Store at +4°C short term (1-2 weeks). Upon delivery aliquot. Store at -20°C long term. Avoid freeze / thaw cycle.
バッファー	<p>pH: 7.20</p> <p>Preservative: 0.01% Sodium azide</p> <p>Constituents: 0.05% BSA, 40% Glycerol (glycerin, glycerine), 59% PBS</p>
精製度	Protein A purified
ポリ/モノ	モノクローナル

クローン名	EP2683Y
アイソタイプ	IgG

アプリケーション

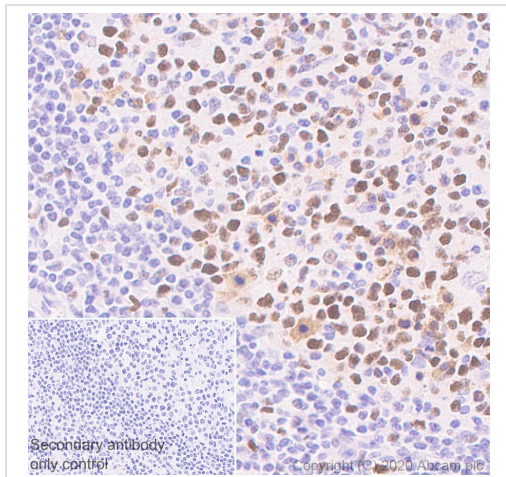
The Abpromise guarantee **Abpromise保証は、**次のテスト済みアプリケーションにおけるab75975の使用に適用されます
アプリケーションノートには、推奨の開始希釈率がありますが、適切な希釈率につきましてはご検討ください。

アプリケーション	Abreviews	特記事項
Flow Cyt (Intra)		1/20. ab172730 - Rabbit monoclonal IgG, is suitable for use as an isotype control with this antibody.
ICC/IF	★★★★★ (1)	1/50. For unpurified use at 1/100 - 1/250.
IP		Use at an assay dependent concentration.
WB		1/1000. Detects a band of approximately 82 kDa (predicted molecular weight: 82 kDa). For unpurified use at 1/1000 - 1/10000.
IHC-P		1/200. Perform heat mediated antigen retrieval before commencing with IHC staining protocol. See IHC antigen retrieval protocols . For unpurified use at 1/250 - 1/500.

ターゲット情報

配列類似性	Belongs to the MCM family. Contains 1 MCM domain.
細胞内局在	Nucleus.

画像



Immunohistochemistry (Formalin/PFA-fixed paraffin-embedded sections) - Anti-MCM5 antibody [EP2683Y] (ab75975)

Immunohistochemistry (Formalin/PFA-fixed paraffin-embedded sections) analysis of Human tonsil tissue sections labeling MCM5 with purified ab75975 at 1/1000 dilution (0.11 µg/mL). Perform heat mediated antigen retrieval using **ab93684** (Tris/EDTA buffer, pH 9.0). ImmunoHistoProbe one step HRP Polymer (ready to use) was used as the secondary antibody. Negative control: PBS instead of the primary antibody. Hematoxylin was used as a counterstain.



Western blot - Anti-MCM5 antibody [EP2683Y] (ab75975)

All lanes : Anti-MCM5 antibody [EP2683Y] (ab75975) at 1/1000 dilution (Purified)

Lane 1 : MCF7 (Human breast adenocarcinoma epithelial cell) whole cell lysate at 15 µg

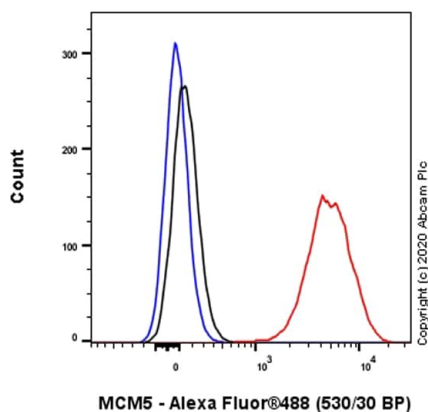
Lane 2 : Mouse spleen lysate at 20 µg

Secondary

All lanes : Goat Anti-Rabbit IgG (HRP) with minimal cross-reactivity with human IgG at 1/2000 dilution

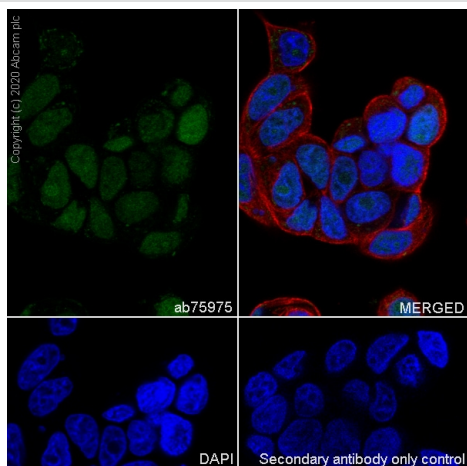
Predicted band size: 82 kDa

Blocking Buffer and concentration: 5% NFDM/TBST.



Flow Cytometry (Intracellular) - Anti-MCM5 antibody
[EP2683Y] (ab75975)

Intracellular Flow Cytometry analysis of MCF7 (Human breast adenocarcinoma epithelial cell) cells labeling MCM5 with Purified ab75975 at 1/20 dilution (10 µg/ml) (Red). Cells were fixed with 4% Paraformaldehyde and permeabilised with 90% Methanol. A Goat anti rabbit IgG (Alexa Fluor® 488, **ab150077**) secondary antibody was used at 1/2000. Isotype control - Rabbit monoclonal IgG (Black). Unlabeled control - Cell without incubation with primary antibody and secondary antibody (Blue).



Immunocytochemistry/ Immunofluorescence - Anti-MCM5 antibody [EP2683Y] (ab75975)

Immunocytochemistry analysis of MCF7 (Human breast adenocarcinoma epithelial cell) cells labeling MCM5 with Purified ab75975 at 1:50 dilution (2.1 µg/ml). Cells were fixed in 4% Paraformaldehyde and permeabilized with 0.1% tritonX-100. Cells were counterstained with Ab195889 Anti-alpha Tubulin antibody [DM1A] - Microtubule Marker (Alexa Fluor® 594) 1:200 (2.5 µg/ml). Goat anti rabbit IgG (Alexa Fluor® 488, **ab150077**) was used as the secondary antibody at 1:1000 (2 µg/ml) dilution. DAPI (blue) was used as nuclear counterstain. PBS instead of the primary antibody was used as the secondary antibody only control.

Why choose a recombinant antibody?



Research with confidence
Consistent and reproducible results



Long-term and scalable supply
Recombinant technology



Success from the first experiment
Confirmed specificity



Ethical standards compliant
Animal-free production

Anti-MCM5 antibody [EP2683Y] (ab75975)

Please note: All products are "FOR RESEARCH USE ONLY. NOT FOR USE IN DIAGNOSTIC PROCEDURES"

Our Abpromise to you: Quality guaranteed and expert technical support

- Replacement or refund for products not performing as stated on the datasheet
- Valid for 12 months from date of delivery
- Response to your inquiry within 24 hours

- We provide support in Chinese, English, French, German, Japanese and Spanish
- Extensive multi-media technical resources to help you
- We investigate all quality concerns to ensure our products perform to the highest standards

If the product does not perform as described on this datasheet, we will offer a refund or replacement. For full details of the Abpromise, please visit <https://www.abcam.co.jp/abpromise> or contact our technical team.

Terms and conditions

- Guarantee only valid for products bought direct from Abcam or one of our authorized distributors