

Anti-MCM4 (phospho S54) antibody ab74014

画像数 1

製品の概要

| | |
|--------------|---|
| 製品名 | Anti-MCM4 (phospho S54) antibody |
| 製品の詳細 | Rabbit polyclonal to MCM4 (phospho S54) |
| 由来種 | Rabbit |
| アプリケーション | 適用あり: WB |
| 種交差性 | 交差種: African green monkey 交差が予測される動物種: Mouse  |
| 免疫原 | Synthetic peptide corresponding to Human MCM4 (phospho S54).  Run BLAST with  Run BLAST with  |
| ポジティブ・コントロール | Extracts from COS-7 cells treated with nocodazole (1uM, 16hours). |
| 特記事項 | <p>The Life Science industry has been in the grips of a reproducibility crisis for a number of years. Abcam is leading the way in addressing this with our range of recombinant monoclonal antibodies and knockout edited cell lines for gold-standard validation. Please check that this product meets your needs before purchasing.</p> <p>If you have any questions, special requirements or concerns, please send us an inquiry and/or contact our Support team ahead of purchase. Recommended alternatives for this product can be found below, along with publications, customer reviews and Q&As</p> |

製品の特性

| | |
|-----------|---|
| 製品の状態 | Liquid |
| 保存方法 | Shipped at 4°C. Upon delivery aliquot and store at -20°C. Avoid repeated freeze / thaw cycles. |
| バッファー | pH: 7.40 Preservative: 0.02% Sodium azide Constituents: 50% Glycerol (glycerin, glycerine), 0.87% Sodium chloride, PBS Without Mg2+ and Ca2+ |
| 精製度 | Immunogen affinity purified |
| 特記事項 (精製) | ab74014 was affinity-purified from rabbit antiserum by affinity-chromatography using epitope-specific phosphopeptide. The antibody against non-phosphopeptide was removed by chromatography using non-phosphopeptide corresponding to the phosphorylation site. |
| ポリ/モノ | ポリクローナル |

アプリケーション

The Abpromise guarantee

Abpromise保証は、次のテスト済みアプリケーションにおけるab74014の使用に適用されます

アプリケーションノートには、推奨の開始希釈率がありますが、適切な希釈率につきましてはご検討ください。

| アプリケーション | Abreviews | 特記事項 |
|----------|-----------|---|
| WB | | 1/500 - 1/1000. Predicted molecular weight: 96 kDa. |

ターゲット情報

機能

Acts as component of the MCM2-7 complex (MCM complex) which is the putative replicative helicase essential for 'once per cell cycle' DNA replication initiation and elongation in eukaryotic cells. The active ATPase sites in the MCM2-7 ring are formed through the interaction surfaces of two neighboring subunits such that a critical structure of a conserved arginine finger motif is provided in trans relative to the ATP-binding site of the Walker A box of the adjacent subunit. The six ATPase active sites, however, are likely to contribute differentially to the complex helicase activity.

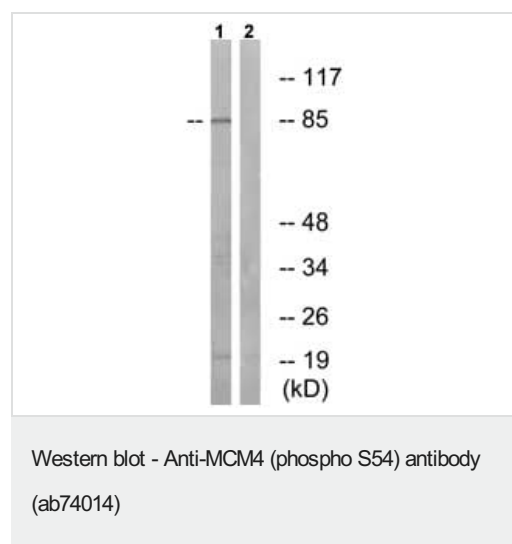
配列類似性

Belongs to the MCM family.
Contains 1 MCM domain.

細胞内局在

Nucleus.

画像



All lanes : Anti-MCM4 (phospho S54) antibody (ab74014) at 1/500 dilution

Lane 1 : Extracts from COS-7 cells treated with nocodazole (1uM, 16hours)

Lane 2 : Extracts from COS-7 cells treated with nocodazole (1uM, 16hours) with immunising phosphopeptide at 5 µg

Lysates/proteins at 5 µg per lane.

Predicted band size: 96 kDa

Observed band size: 88 kDa

Additional bands at: 20 kDa. We are unsure as to the identity of these extra bands.

Please note: All products are "FOR RESEARCH USE ONLY. NOT FOR USE IN DIAGNOSTIC PROCEDURES"

Our Abpromise to you: Quality guaranteed and expert technical support

- Replacement or refund for products not performing as stated on the datasheet
- Valid for 12 months from date of delivery
- Response to your inquiry within 24 hours

- We provide support in Chinese, English, French, German, Japanese and Spanish
- Extensive multi-media technical resources to help you
- We investigate all quality concerns to ensure our products perform to the highest standards

If the product does not perform as described on this datasheet, we will offer a refund or replacement. For full details of the Abpromise, please visit <https://www.abcam.co.jp/abpromise> or contact our technical team.

Terms and conditions

- Guarantee only valid for products bought direct from Abcam or one of our authorized distributors