


## Anti-MCM4 antibody [EPR5245] ab124836

リコンビナント RabMAb<sup>®</sup>

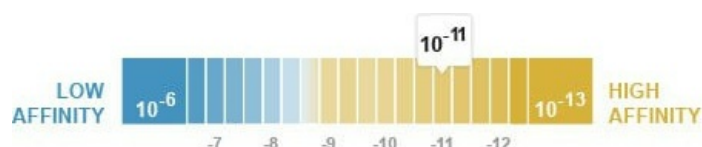
**2 References**   [画像数 4](#)

### 製品の概要

製品名	Anti-MCM4 antibody [EPR5245]
製品の詳細	Rabbit monoclonal [EPR5245] to MCM4
由来種	Rabbit
アプリケーション	<b>適用あり:</b> Flow Cyt (Intra), WB <b>適用なし:</b> ICC/IF or IHC-P
種交差性	<b>交差種:</b> Human <b>交差が予測される動物種:</b> Mouse 
免疫原	Synthetic peptide within Human MCM4 aa 800-900 (C terminal). The exact sequence is proprietary.
ポジティブ・コントロール	HeLa, Molt-4, and A431 cell lysates and Molt-4 cells.
特記事項	<p>This product is a recombinant monoclonal antibody, which offers several advantages including:</p> <ul style="list-style-type: none"> <li>- High batch-to-batch consistency and reproducibility</li> <li>- Improved sensitivity and specificity</li> <li>- Long-term security of supply</li> <li>- Animal-free production</li> </ul> <p>For more information <a href="#">see here</a>.</p> <p>Our RabMAb<sup>®</sup> technology is a patented hybridoma-based technology for making rabbit monoclonal antibodies. For details on our patents, please refer to <a href="#">RabMAb<sup>®</sup> patents</a>.</p> <p>Rat: We have preliminary internal testing data to indicate this antibody may not react with this species. Please contact us for more information.</p>

### 製品の特性

製品の状態	Liquid
保存方法	Shipped at 4°C. Store at -20°C. Stable for 12 months at -20°C.
解離定数 (K <sub>D</sub> 値)	K <sub>D</sub> = 1.80 x 10 <sup>-11</sup> M



[Learn more about K<sub>D</sub>](#)

バッファー	pH: 7.20 Preservative: 0.05% Sodium azide Constituents: 40% Glycerol (glycerin, glycerine), 9.85% Tris glycine, 50% Tissue culture supernatant
精製度	Protein A purified
ポリ/モノ	モノクローナル
クローン名	EPR5245
アイソタイプ	IgG

#### アプリケーション

The Abpromise guarantee **Abpromise保証は、次のテスト済みアプリケーションにおけるab124836の使用に適用されます**  
アプリケーションノートには、推奨の開始希釈率がありますが、適切な希釈率につきましてはご検討ください。

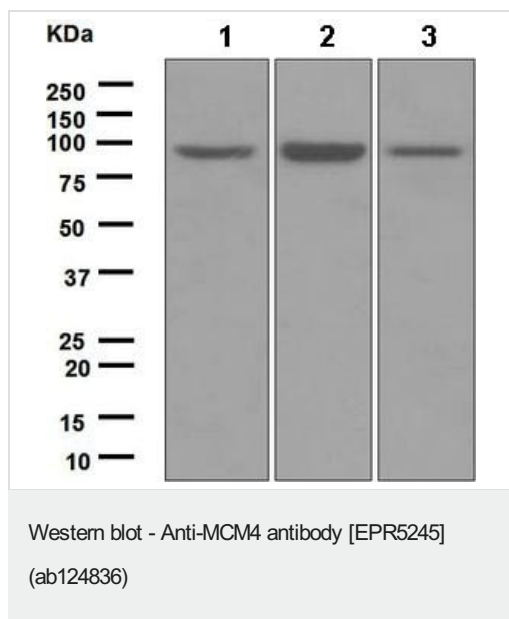
アプリケーション	Abreviews	特記事項
Flow Cyt (Intra)		1/100 - 1/500. <b>ab172730</b> - Rabbit monoclonal IgG, is suitable for use as an isotype control with this antibody.
WB		1/50000 - 1/200000. Predicted molecular weight: 97 kDa.

追加情報 Is unsuitable for ICC/IF or IHC-P.

#### ターゲット情報

機能	Acts as component of the MCM2-7 complex (MCM complex) which is the putative replicative helicase essential for 'once per cell cycle' DNA replication initiation and elongation in eukaryotic cells. The active ATPase sites in the MCM2-7 ring are formed through the interaction surfaces of two neighboring subunits such that a critical structure of a conserved arginine finger motif is provided in trans relative to the ATP-binding site of the Walker A box of the adjacent subunit. The six ATPase active sites, however, are likely to contribute differentially to the complex helicase activity.
配列類似性	Belongs to the MCM family. Contains 1 MCM domain.
細胞内局在	Nucleus.

#### 画像



**All lanes :** Anti-MCM4 antibody [EPR5245] (ab124836) at 1/50000 dilution

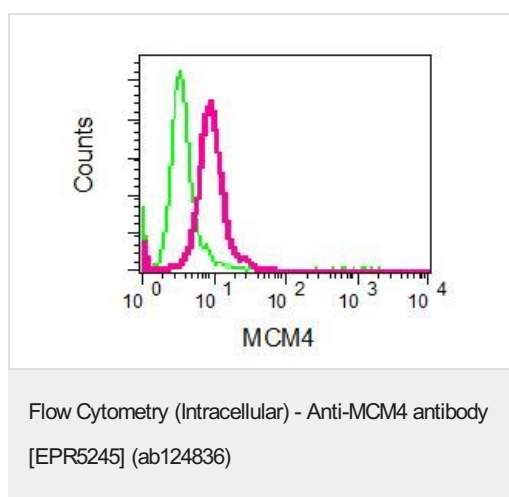
**Lane 1 :** HeLa cell lysate

**Lane 2 :** Molt-4 cell lysate

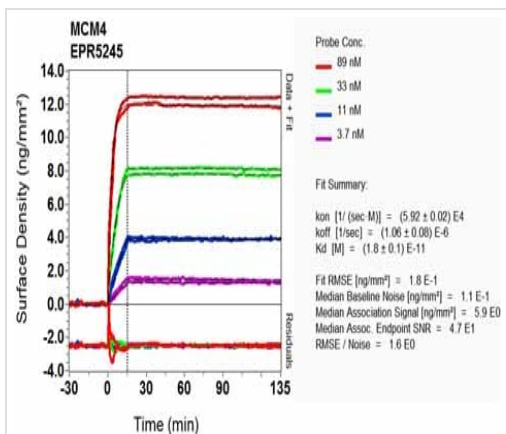
**Lane 3 :** A431 cell lysate

Lysates/proteins at 10 µg per lane.

**Predicted band size:** 97 kDa



Intracellular flow cytometric analysis of permeabilized Molt-4 cells using anti-MCM4 in red (ab124836) or a rabbit IgG in green (negative).



SPR Scanning - Anti-MCM4 antibody [EPR5245]  
(ab124836)

Equilibrium dissociation constant ( $K_D$ )

Learn more about  $K_D$

[Click here to learn more about  \$K\_D\$](#)

Why choose a  
recombinant antibody?



**Research with  
confidence**  
Consistent and  
reproducible results



**Long-term and  
scalable supply**  
Recombinant  
technology



**Success from the  
first experiment**  
Confirmed  
specificity



**Ethical standards  
compliant**  
Animal-free  
production

Anti-MCM4 antibody [EPR5245] (ab124836)

**Please note:** All products are "FOR RESEARCH USE ONLY. NOT FOR USE IN DIAGNOSTIC PROCEDURES"

## Our Abpromise to you: Quality guaranteed and expert technical support

- Replacement or refund for products not performing as stated on the datasheet
- Valid for 12 months from date of delivery
- Response to your inquiry within 24 hours
- We provide support in Chinese, English, French, German, Japanese and Spanish
- Extensive multi-media technical resources to help you
- We investigate all quality concerns to ensure our products perform to the highest standards

If the product does not perform as described on this datasheet, we will offer a refund or replacement. For full details of the Abpromise, please visit <https://www.abcam.co.jp/abpromise> or contact our technical team.

## Terms and conditions

- Guarantee only valid for products bought direct from Abcam or one of our authorized distributors