

Anti-MCM4 antibody ab4459

★★★★★ **1 Abreviews** **30 References** 画像数 5

製品の概要

製品名	Anti-MCM4 antibody
製品の詳細	Rabbit polyclonal to MCM4
由来種	Rabbit
アプリケーション	適用あり: ICC/IF, IHC-P, WB 適用なし: IP
種交差性	交差種: Mouse, Human, Xenopus laevis 交差が予測される動物種: Rabbit, Horse, Guinea pig, Cow, Chimpanzee, Drosophila melanogaster, Rhesus monkey, Gorilla, Opossum, Orangutan, Elephant 
免疫原	Synthetic peptide within Human MCM4 aa 750-850. The exact immunogen sequence used to generate this antibody is proprietary information. If additional detail on the immunogen is needed to determine the suitability of the antibody for your needs, please contact our Scientific Support team to discuss your requirements. NP_005905.2 (GeneID 4173). Database link: <u>P33991</u>
ポジティブ・コントロール	IHC-P: Human testicular seminoma and mouse squamous cell carcinoma tissue. Human testis tissue. WB: HeLa cell RIPA extract. HeLa nuclear cell lysate. ICC/IF: HeLa cells.
特記事項	<p>The Life Science industry has been in the grips of a reproducibility crisis for a number of years. Abcam is leading the way in addressing this with our range of recombinant monoclonal antibodies and knockout edited cell lines for gold-standard validation. Please check that this product meets your needs before purchasing.</p> <p>If you have any questions, special requirements or concerns, please send us an inquiry and/or contact our Support team ahead of purchase. Recommended alternatives for this product can be found below, along with publications, customer reviews and Q&As</p>

製品の特性

製品の状態	Liquid
保存方法	Shipped at 4°C. Upon delivery aliquot and store at -20°C. Avoid freeze / thaw cycles.
バッファー	pH: 7 Preservative: 0.1% Sodium azide Constituents: 0.021% PBS, 1.764% Sodium citrate, 1.815% Tris
精製度	Immunogen affinity purified

ポリ/モノ	ポリクローナル
アイソタイプ	IgG

アプリケーション

The Abpromise guarantee Abpromise保証は、 次のテスト済みアプリケーションにおけるab4459の使用に適用されます
アプリケーションノートには、推奨の開始希釈率がありますが、適切な希釈率につきましてはご確認ください。

アプリケーション	Abreviews	特記事項
ICC/IF		Use a concentration of 1 µg/ml.
IHC-P		1/1000. Perform heat mediated antigen retrieval with citrate buffer pH 6 before commencing with IHC staining protocol.
WB	★★★★★ (1)	1/2000 - 1/10000. Detects a band of approximately 100 kDa (predicted molecular weight: 96.6 kDa).

追加情報 Is unsuitable for IP.

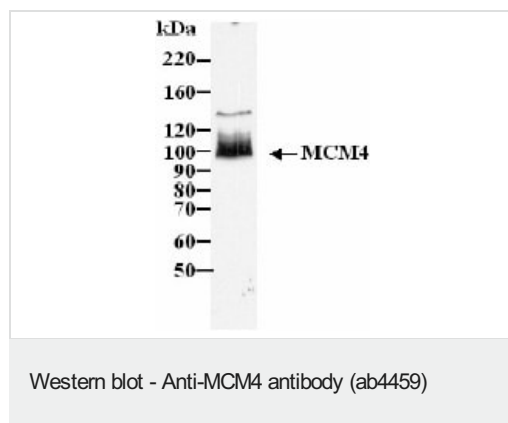
ターゲット情報

機能 Acts as component of the MCM2-7 complex (MCM complex) which is the putative replicative helicase essential for 'once per cell cycle' DNA replication initiation and elongation in eukaryotic cells. The active ATPase sites in the MCM2-7 ring are formed through the interaction surfaces of two neighboring subunits such that a critical structure of a conserved arginine finger motif is provided in trans relative to the ATP-binding site of the Walker A box of the adjacent subunit. The six ATPase active sites, however, are likely to contribute differentially to the complex helicase activity.

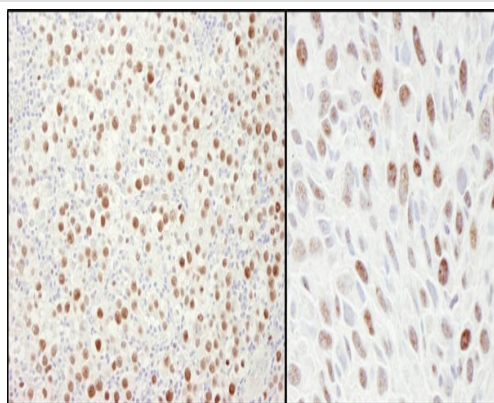
配列類似性 Belongs to the MCM family.
Contains 1 MCM domain.

細胞内局在 Nucleus.

画像

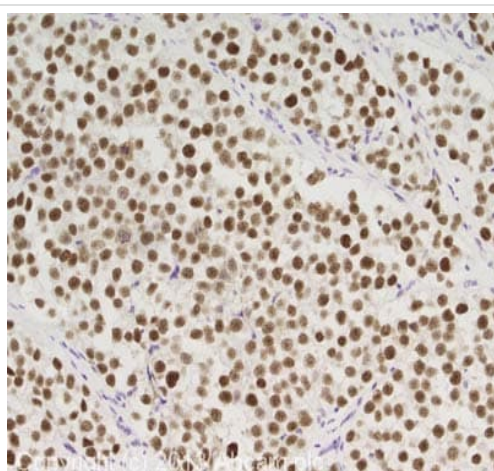


HeLa cell RIPA extract incubated with 0.2 µg/ml of ab4459 for 1 hour. HeLa cell RIPA extract incubated with 0.2 µg/ml of ab4459 for 1 hour.



Immunohistochemistry (Formalin/PFA-fixed paraffin-embedded sections) - Anti-MCM4 antibody (ab4459)

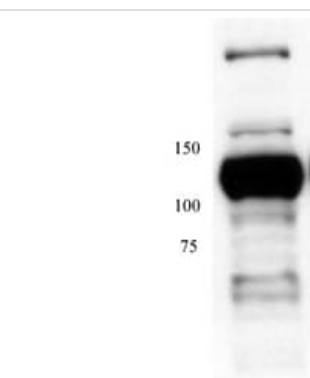
Immunohistochemistry (Formalin/PFA-fixed paraffin-embedded sections) analysis of human testicular seminoma (left) and mouse squamous cell carcinoma (right) tissues labelling MCM4 with ab4459 at 1/1000 (1 µg/ml). Detection: DAB.



Immunohistochemistry (Formalin/PFA-fixed paraffin-embedded sections) - Anti-MCM4 antibody (ab4459)

IHC image of MCM4 staining in human testis formalin fixed paraffin embedded tissue section, performed on a Leica Bond system using the standard protocol F. The section was pre-treated using heat mediated antigen retrieval with sodium citrate buffer (pH6, epitope retrieval solution 1) for 20 mins. The section was then incubated with ab4459, 1 µg/ml, for 15 mins at room temperature and detected using an HRP conjugated compact polymer system. DAB was used as the chromogen. The section was then counterstained with haematoxylin and mounted with DPX.

For other IHC staining systems (automated and non-automated) customers should optimize variable parameters such as antigen retrieval conditions, primary antibody concentration and antibody incubation times.



Western blot - Anti-MCM4 antibody (ab4459)

Anti-MCM4 antibody (ab4459) at 1/2000 dilution + HeLa nuclear cell lysate. at 20 µg

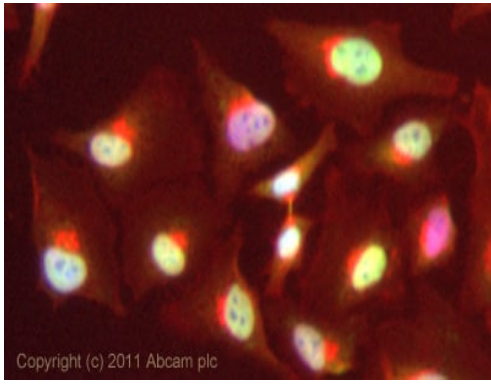
Secondary

Goat anti rabbit HRP . at 1/5000 dilution

Performed under reducing conditions.

Predicted band size: 96.6 kDa

This image is an edited version of an image received courtesy of an Abreview submitted by **Jason DeHart** on **22 August 2005**. We do not have any further information relating to this image.



Immunocytochemistry/ Immunofluorescence - Anti-MCM4 antibody (ab4459)

ICC/IF image of ab4459 stained HeLa cells. The cells were 4% formaldehyde fixed (10 min) and then incubated in 1%BSA / 10% normal goat serum / 0.3M glycine in 0.1% PBS-Tween for 1h to permeabilise the cells and block non-specific protein-protein interactions. The cells were then incubated with the antibody (ab4459, 1µg/ml) overnight at +4°C. The secondary antibody (green) was Alexa Fluor® 488 goat anti-rabbit IgG (H+L) used at a 1/1000 dilution for 1h. Alexa Fluor® 594 WGA was used to label plasma membranes (red) at a 1/200 dilution for 1h. DAPI was used to stain the cell nuclei (blue) at a concentration of 1.43µM.

Please note: All products are "FOR RESEARCH USE ONLY. NOT FOR USE IN DIAGNOSTIC PROCEDURES"

Our Abpromise to you: Quality guaranteed and expert technical support

- Replacement or refund for products not performing as stated on the datasheet
- Valid for 12 months from date of delivery
- Response to your inquiry within 24 hours
- We provide support in Chinese, English, French, German, Japanese and Spanish
- Extensive multi-media technical resources to help you
- We investigate all quality concerns to ensure our products perform to the highest standards

If the product does not perform as described on this datasheet, we will offer a refund or replacement. For full details of the Abpromise, please visit <https://www.abcam.co.jp/abpromise> or contact our technical team.

Terms and conditions

- Guarantee only valid for products bought direct from Abcam or one of our authorized distributors