

Anti-MCM2 antibody [SP85] ab95361

リコンビナント **RabMAb**

2 References **画像数 12**

製品の概要

製品名	Anti-MCM2 antibody [SP85]
製品の詳細	Rabbit monoclonal [SP85] to MCM2
由来種	Rabbit
アプリケーション	適用あり: WB, IHC-P, Flow Cyt (Intra), ICC/IF
種交差性	交差種: Mouse, Rat, Human 交差が予測される動物種: Cow, Dog 
免疫原	Synthetic peptide within Human MCM2 aa 100-200. The exact sequence is proprietary. Database link: <u>P49736</u>
ポジティブ・コントロール	WB: HeLa cell lysate. IHC-P: Human rectal carcinoma, human pancreas adenocarcinoma and human prostate tissue. ICC/IF: HeLa, NIH/3T3 and C6 cells. Flow Cyt (Intra): HeLa, NIH/3T3 and C6 cells.
特記事項	This product is FOR RESEARCH USE ONLY. For commercial use, please contact partnerships@abcam.com.

製品の特性

製品の状態	Liquid
保存方法	Shipped at 4°C. Store at +4°C.
バッファー	pH: 7.60 Preservative: 0.1% Sodium azide Constituents: PBS, 1% BSA
精製度	Protein A/G purified
特記事項(精製)	Purified from TCS by protein A/G.
ポリ/モノ	モノクローナル
クローン名	SP85
アイソタイプ	IgG

アプリケーション

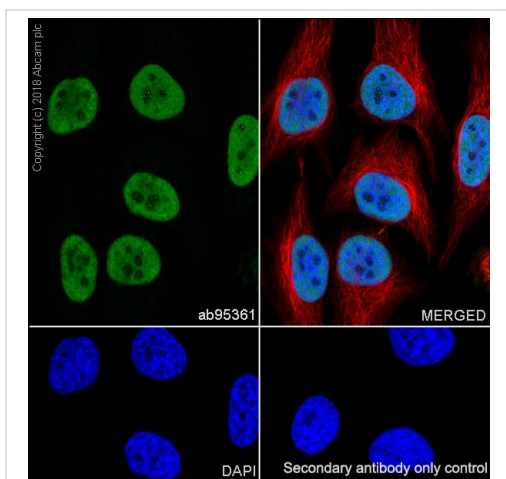
The Abpromise guarantee Abpromise保証は、 次のテスト済みアプリケーションにおけるab95361の使用に適用されます
 アプリケーションノートには、推奨の開始希釈率がありますが、適切な希釈率につきましてはご検討ください。

アプリケーション	Abreviews	特記事項
WB		Use at an assay dependent concentration.
IHC-P		1/100. Antigen retrieval is recommended by the following method: boil tissue section in 1mM EDTA, pH 8.0 for 10 min followed by cooling at RT for 20 min.
Flow Cyt (Intra)		1/200. <u>ab172730</u> - Rabbit monoclonal IgG, is suitable for use as an isotype control with this antibody.
ICC/IF		1/50.

ターゲット情報

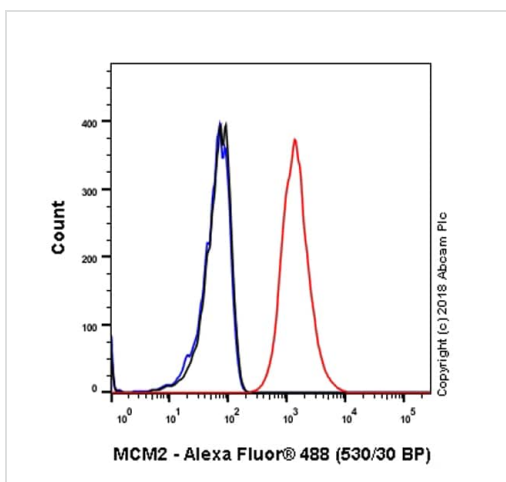
機能	Acts as component of the MCM2-7 complex (MCM complex) which is the putative replicative helicase essential for 'once per cell cycle' DNA replication initiation and elongation in eukaryotic cells. The active ATPase sites in the MCM2-7 ring are formed through the interaction surfaces of two neighboring subunits such that a critical structure of a conserved arginine finger motif is provided in trans relative to the ATP-binding site of the Walker A box of the adjacent subunit. The six ATPase active sites, however, are likely to contribute differentially to the complex helicase activity. Required for the entry in S phase and for cell division.
配列類似性	Belongs to the MCM family. Contains 1 MCM domain.
翻訳後修飾	Phosphorylated on Ser-108 by ATR in proliferating cells. Ser-108 proliferation is increased by genotoxic agents. Ser-40 is mediated by the CDC7-DBF4 and CDC7-DBF4B complexes, while Ser-53 phosphorylation is only mediated by the CDC7-DBF4 complex. Phosphorylation by the CDC7-DBF4 complex during G1/S phase is required for the initiation of DNA replication.
細胞内局在	Nucleus.

画像



Immunocytochemistry/ Immunofluorescence - Anti-MCM2 antibody [SP85] (ab95361)

Immunocytochemistry/ Immunofluorescence analysis of HeLa (human cervix adenocarcinoma epithelial cell) cells labeling MCM2 with purified ab95361 at 1/50 (2.5 µg/ml). Cells were fixed in 4% paraformaldehyde and permeabilized with 0.1% Triton X-100. Cells were counterstained with **ab195889** Anti-alpha Tubulin antibody [DM1A] - Microtubule Marker (Alexa Fluor® 594) 1/200 (2.5 µg/ml). Goat anti rabbit IgG (Alexa Fluor® 488, **ab150077**) was used as the secondary antibody at 1/1000 (2 µg/ml) dilution. DAPI was used as nuclear counterstain. PBS instead of the primary antibody was used as the secondary antibody only control.



Flow Cytometry (Intracellular) - Anti-MCM2 antibody [SP85] (ab95361)

Flow cytometry analysis of HeLa (human cervix adenocarcinoma epithelial cell) labeling MCM2 with purified ab95361 at 1/200 dilution (0.615 µg/ml) (red). Cells were fixed with 4% paraformaldehyde and permeabilised with 90% methanol. Goat anti rabbit IgG (Alexa Fluor® 488, **ab150077**) at 1/2000 dilution was used as a secondary antibody. Isotype control - Rabbit monoclonal IgG (**ab172730**) (black). Unlabeled control - Unlabelled cells (blue).

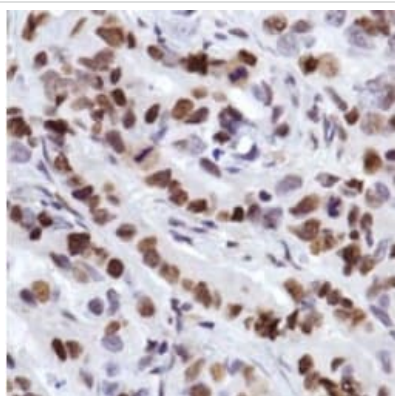
kD
250
150
100
75
50
37
25
20
15
10



Western blot - Anti-MCM2 antibody [SP85]
(ab95361)

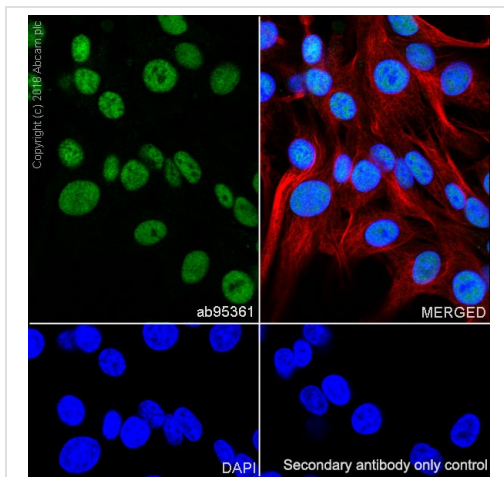
Anti-MCM2 antibody [SP85] (ab95361) at 1/100 dilution + lysate prepared from HeLa cells

Observed band size: 130 kDa



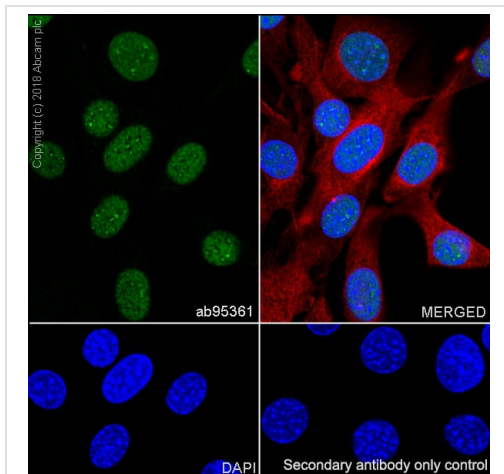
Immunohistochemistry (Formalin/PFA-fixed paraffin-embedded sections) - Anti-MCM2 antibody [SP85]
(ab95361)

ab95361, at 1/100 dilution, staining MCM2 in formalin-fixed, paraffin-embedded Human rectal carcinoma tissue by Immunohistochemistry.



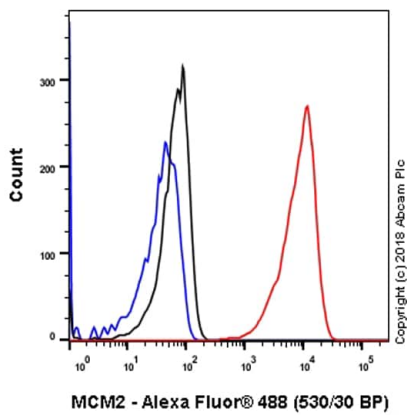
Immunocytochemistry/ Immunofluorescence - Anti-MCM2 antibody [SP85] (ab95361)

Immunocytochemistry/ Immunofluorescence analysis of C6 (rat glial tumor glial cell) cells labeling MCM2 with purified ab95361 at 1/50 (2.5 µg/ml). Cells were fixed in 4% paraformaldehyde and permeabilized with 0.1% Triton X-100. Cells were counterstained with **ab195889** Anti-alpha Tubulin antibody [DM1A] - Microtubule Marker (Alexa Fluor® 594) 1/200 (2.5 µg/ml). Goat anti rabbit IgG (Alexa Fluor® 488, **ab150077**) was used as the secondary antibody at 1/1000 (2 µg/ml) dilution. DAPI was used as nuclear counterstain. PBS instead of the primary antibody was used as the secondary antibody only control.



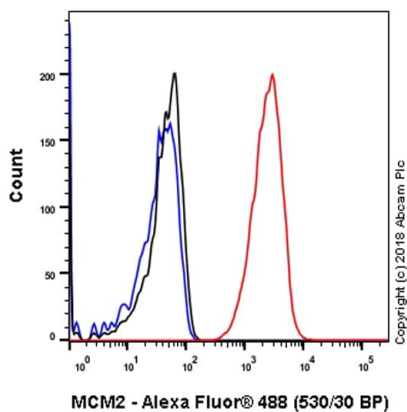
Immunocytochemistry/ Immunofluorescence - Anti-MCM2 antibody [SP85] (ab95361)

Immunocytochemistry/ Immunofluorescence analysis of NIH/3T3 (mouse embryonic fibroblast) cells labeling MCM2 with purified ab95361 at 1/50 (2.5 µg/ml). Cells were fixed in 4% paraformaldehyde and permeabilized with 0.1% Triton X-100. Cells were counterstained with **ab195889** Anti-alpha Tubulin antibody [DM1A] - Microtubule Marker (Alexa Fluor® 594) 1/200 (2.5 µg/ml). Goat anti rabbit IgG (Alexa Fluor® 488, **ab150077**) was used as the secondary antibody at 1/1000 (2 µg/ml) dilution. DAPI was used as nuclear counterstain. PBS instead of the primary antibody was used as the secondary antibody only control.



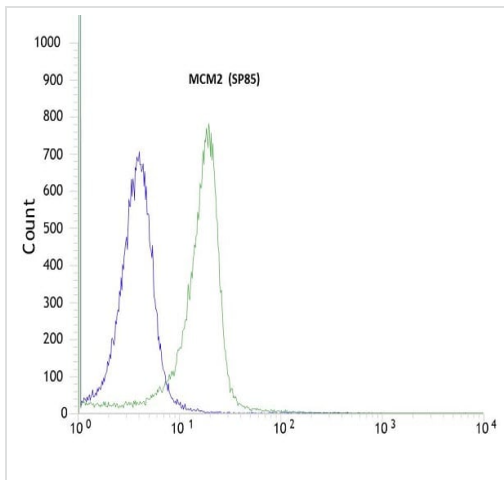
Flow Cytometry (Intracellular) - Anti-MCM2 antibody
[SP85] (ab95361)

Flow cytometry analysis of C6 (rat glial tumor glial cell) labeling MCM2 with purified ab95361 at 1/200 dilution (0.615 µg/ml) (red). Cells were fixed with 4% paraformaldehyde and permeabilised with 90% methanol. Goat anti rabbit IgG (Alexa Fluor® 488, [ab150077](#)) at 1/2000 dilution was used as a secondary antibody. Isotype control - Rabbit monoclonal IgG ([ab172730](#)) (black). Unlabeled control - Unlabelled cells (blue).



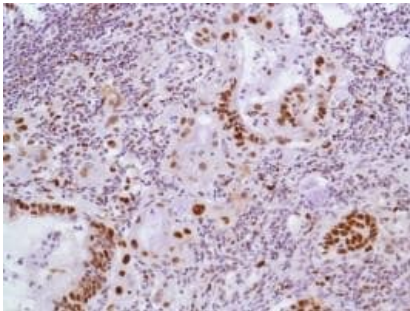
Flow Cytometry (Intracellular) - Anti-MCM2 antibody
[SP85] (ab95361)

Flow cytometry analysis of NIH/3T3 (mouse embryonic fibroblast) labeling MCM2 with purified ab95361 at 1/200 dilution (0.615 µg/ml) (red). Cells were fixed with 4% paraformaldehyde and permeabilised with 90% methanol. Goat anti rabbit IgG (Alexa Fluor® 488, [ab150077](#)) at 1/2000 dilution was used as a secondary antibody. Isotype control - Rabbit monoclonal IgG ([ab172730](#)) (black). Unlabeled control - Unlabelled cells (blue).



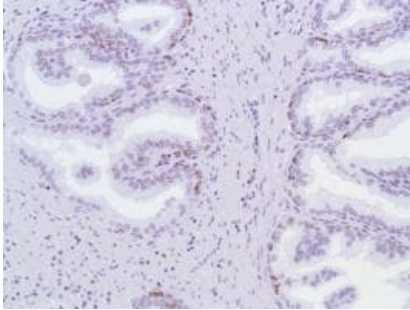
Flow cytometric analysis using rabbit anti-MCM2 (SP85) antibody ab95361(1/100) in HeLa cells (green) compared to negative control of rabbit IgG (blue).

Flow Cytometry (Intracellular) - Anti-MCM2 antibody [SP85] (ab95361)



ab95361, at 1/100 dilution, staining MCM2 in formalin-fixed, paraffin-embedded Human pancreas adenocarcinoma tissue by Immunohistochemistry.

Immunohistochemistry (Formalin/PFA-fixed paraffin-embedded sections) - Anti-MCM2 antibody [SP85] (ab95361)



ab95361, at 1/100 dilution, staining MCM2 in formalin-fixed, paraffin-embedded Human prostate tissue by Immunohistochemistry.

Immunohistochemistry (Formalin/PFA-fixed paraffin-embedded sections) - Anti-MCM2 antibody [SP85] (ab95361)

Why choose a recombinant antibody?



Research with confidence
Consistent and reproducible results



Long-term and scalable supply
Recombinant technology



Success from the first experiment
Confirmed specificity



Ethical standards compliant
Animal-free production

Anti-MCM2 antibody [SP85] (ab95361)

Please note: All products are "FOR RESEARCH USE ONLY. NOT FOR USE IN DIAGNOSTIC PROCEDURES"

Our Abpromise to you: Quality guaranteed and expert technical support

- Replacement or refund for products not performing as stated on the datasheet
- Valid for 12 months from date of delivery
- Response to your inquiry within 24 hours
- We provide support in Chinese, English, French, German, Japanese and Spanish
- Extensive multi-media technical resources to help you
- We investigate all quality concerns to ensure our products perform to the highest standards

If the product does not perform as described on this datasheet, we will offer a refund or replacement. For full details of the Abpromise, please visit <https://www.abcam.co.jp/abpromise> or contact our technical team.

Terms and conditions

- Guarantee only valid for products bought direct from Abcam or one of our authorized distributors