

Anti-MCL1 antibody ab28147

8 References [画像数 3](#)

製品の概要

製品名	Anti-MCL1 antibody
製品の詳細	Rabbit polyclonal to MCL1
由来種	Rabbit
特異性	This antibody detects an ~42/43 kDa protein doublet, corresponding to the expected molecular mass of Mcl1 on SDS-PAGE immunoblots. The antibody specificity is confirmed by peptide inhibition studies. An additional protein at ~33kDa may also be detected. Other additional proteins may also be seen in some samples.
アプリケーション	適用あり: IHC-P, WB, ICC/IF
種交差性	交差種: Rabbit, Guinea pig, Dog, Human, Pig, Monkey
免疫原	Synthetic peptide corresponding to Human MCL1 aa 121-139 conjugated to Keyhole Limpet Haemocyanin (KLH). Sequence: SPEEELDGYEPEPLGKRPA Run BLAST with Run BLAST with
ポジティブ・コントロール	ICC/IF: Human HeLa cells; IHC-P: Human breast cancer tissue; WB: Hela, MDCK and RK-13 whole cell lysates.
特記事項	<p>The Life Science industry has been in the grips of a reproducibility crisis for a number of years. Abcam is leading the way in addressing this with our range of recombinant monoclonal antibodies and knockout edited cell lines for gold-standard validation. Please check that this product meets your needs before purchasing.</p> <p>If you have any questions, special requirements or concerns, please send us an inquiry and/or contact our Support team ahead of purchase. Recommended alternatives for this product can be found below, along with publications, customer reviews and Q&As</p>

製品の特性

製品の状態	Liquid
保存方法	Shipped at 4°C. Store at +4°C short term (1-2 weeks). Upon delivery aliquot. Store at -20°C or -80°C. Avoid freeze / thaw cycle.
バッファー	Preservative: 0.09% Sodium azide Constituent: PBS

精製度	Immunogen affinity purified
ポリクローナル	ポリクローナル
アイソタイプ	IgG

アプリケーション

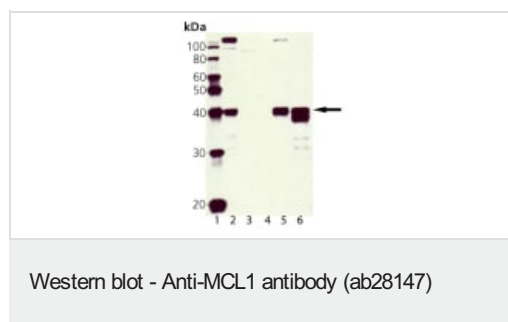
The Abpromise guarantee **Abpromise保証は、次のテスト済みアプリケーションにおけるab28147の使用に適用されず**
 アプリケーションノートには、推奨の開始希釈率がありますが、適切な希釈率につきましてはご検討ください。

アプリケーション	Abreviews	特記事項
IHC-P		Use at an assay dependent concentration.
WB		Use a concentration of 0.1 µg/ml. Predicted molecular weight: 42-43 kDa. 0.1 µg/ml was sufficient for detection of Mcl1 in 20µg of HeLa Heat Shocked Cell Lysate by ECL immunoblot analysis.
ICC/IF		Use at an assay dependent concentration.

ターゲット情報

機能	Involved in the regulation of apoptosis versus cell survival, and in the maintenance of viability but not of proliferation. Mediates its effects by interactions with a number of other regulators of apoptosis. Isoform 1 inhibits apoptosis. Isoform 2 promotes apoptosis.
配列類似性	Belongs to the Bcl-2 family.
翻訳後修飾	Cleaved by CASP3 during apoptosis. In intact cells cleavage occurs preferentially after Asp-127, yielding a pro-apoptotic 28 kDa C-terminal fragment. Rapidly degraded in the absence of phosphorylation on Thr-163 in the PEST region. Phosphorylated on Thr-163. Treatment with taxol or okadaic acid induces phosphorylation on additional sites.
細胞内局在	Membrane. Cytoplasm. Mitochondrion. Nucleus > nucleoplasm. Cytoplasmic, associated with mitochondria.

画像



All lanes : Anti-MCL1 antibody (ab28147) at 1/500 dilution

Lane 2 : HeLa whole cell lysate

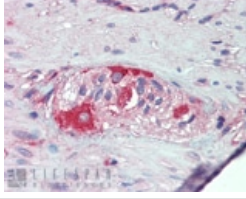
Lane 3 : 3T3 whole cell lysate

Lane 4 : PC-12 whole cell lysate

Lane 5 : MDCK whole cell lysate

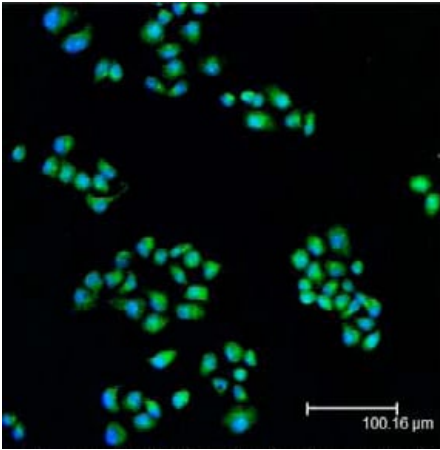
Lane 6 : RK-13 whole cell lysate

Predicted band size: 42-43 kDa



Immunohistochemistry (Formalin/PFA-fixed paraffin-embedded sections) - Anti-MCL1 antibody (ab28147)

ab28147 staining MCL1 in human breast cancer tissue cells by Immunohistochemistry



Immunocytochemistry/ Immunofluorescence - Anti-MCL1 antibody (ab28147)

ab28147 staining MCL1 in human HeLa cells by Immunocytochemistry/ immunofluorescence.

Please note: All products are "FOR RESEARCH USE ONLY. NOT FOR USE IN DIAGNOSTIC PROCEDURES"

Our Abpromise to you: Quality guaranteed and expert technical support

- Replacement or refund for products not performing as stated on the datasheet
- Valid for 12 months from date of delivery
- Response to your inquiry within 24 hours
- We provide support in Chinese, English, French, German, Japanese and Spanish
- Extensive multi-media technical resources to help you
- We investigate all quality concerns to ensure our products perform to the highest standards

If the product does not perform as described on this datasheet, we will offer a refund or replacement. For full details of the Abpromise, please visit <https://www.abcam.co.jp/abpromise> or contact our technical team.

Terms and conditions

- Guarantee only valid for products bought direct from Abcam or one of our authorized distributors