

Anti-MCAF1 antibody ab84497

5 References [画像数 2](#)

製品の概要

製品名	Anti-MCAF1 antibody
製品の詳細	Rabbit polyclonal to MCAF1
由来種	Rabbit
アプリケーション	適用あり: IHC-P
種交差性	交差種: Mouse, Human 交差が予測される動物種: Horse, Cow, Dog, Pig, Chimpanzee, Rhesus monkey, Gorilla, Orangutan, Elephant 
免疫原	Synthetic peptide within Human MCAF1 aa 1-100. The exact immunogen sequence used to generate this antibody is proprietary information. If additional detail on the immunogen is needed to determine the suitability of the antibody for your needs, please contact our Scientific Support team to discuss your requirements. AAQ92978.1 Database link: Q6VMQ6
ポジティブ・コントロール	Human small cell lung cancer. Mouse squamous cell carcinoma.
特記事項	<p>The Life Science industry has been in the grips of a reproducibility crisis for a number of years. Abcam is leading the way in addressing this with our range of recombinant monoclonal antibodies and knockout edited cell lines for gold-standard validation. Please check that this product meets your needs before purchasing.</p> <p>If you have any questions, special requirements or concerns, please send us an inquiry and/or contact our Support team ahead of purchase. Recommended alternatives for this product can be found below, along with publications, customer reviews and Q&As</p>

製品の特性

製品の状態	Liquid
保存方法	Shipped at 4°C. Upon delivery aliquot and store at -20°C. Avoid freeze / thaw cycles.
バッファー	pH: 6.8 Preservative: 0.09% Sodium azide Constituents: 0.1% BSA, Tris buffered saline
精製度	Immunogen affinity purified
ポリモノ	ポリクローナル
アイソタイプ	IgG

アプリケーション

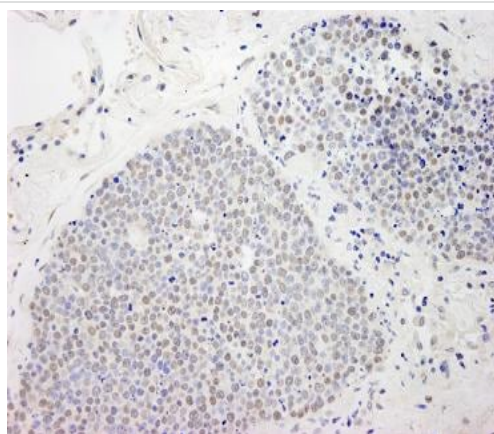
The Abpromise guarantee **Abpromise保証は、次のテスト済みアプリケーションにおけるab84497の使用に適用されます**
アプリケーションノートには、推奨の開始希釈率がありますが、適切な希釈率につきましてはご検討ください。

アプリケーション	Abreviews	特記事項
IHC-P		1/100 - 1/500. Epitope exposure is recommended. Epitope exposure with citrate buffer will enhance staining.

ターゲット情報

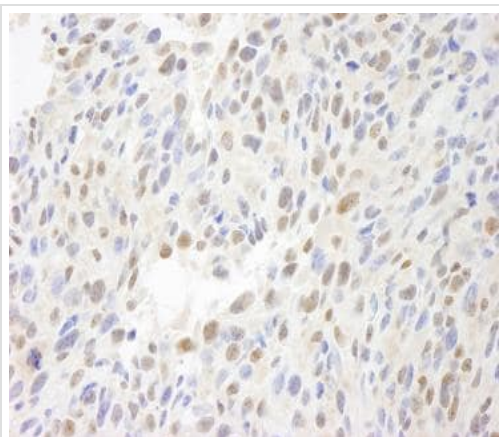
関連性	MCAF1 is a recruiter that couples transcriptional factors to general transcription apparatus and thereby modulates transcription regulation and chromatin formation. It can act both as an activator or a repressor depending on the context. It mediates MBD1-dependent transcriptional repression, probably by recruiting complexes containing SETDB1. MCAF1 is required to stimulate histone methyltransferase activity of SETDB1 and facilitate the conversion of dimethylated to trimethylated H3 'Lys-9'. The complex formed with MBD1 and SETDB1 represses transcription and couples DNA methylation and histone 'Lys-9' trimethylation.
細胞内局在	Nuclear

画像



ab84497, at 1/250 dilution, staining MCAF1 in formalin-fixed, paraffin-embedded human small cell lung cancer by Immunohistochemistry, using DAB staining.

Immunohistochemistry (Formalin/PFA-fixed paraffin-embedded sections) - Anti-MCAF1 antibody (ab84497)



ab84497, at 1/250 dilution, staining MCAF1 in formalin-fixed, paraffin-embedded mouse squamous cell carcinoma by Immunohistochemistry, using DAB staining.

Immunohistochemistry (Formalin/PFA-fixed paraffin-embedded sections) - Anti-MCAF1 antibody (ab84497)

Please note: All products are "FOR RESEARCH USE ONLY. NOT FOR USE IN DIAGNOSTIC PROCEDURES"

Our Abpromise to you: Quality guaranteed and expert technical support

- Replacement or refund for products not performing as stated on the datasheet
- Valid for 12 months from date of delivery
- Response to your inquiry within 24 hours
- We provide support in Chinese, English, French, German, Japanese and Spanish
- Extensive multi-media technical resources to help you
- We investigate all quality concerns to ensure our products perform to the highest standards

If the product does not perform as described on this datasheet, we will offer a refund or replacement. For full details of the Abpromise, please visit <https://www.abcam.co.jp/abpromise> or contact our technical team.

Terms and conditions

- Guarantee only valid for products bought direct from Abcam or one of our authorized distributors