



### Anti-MC4-R antibody ab24233

★★★★☆ **17 Abreviews**   **20 References**   画像数 2

#### 製品の概要

製品名	Anti-MC4-R antibody
製品の詳細	Rabbit polyclonal to MC4-R
由来種	Rabbit
アプリケーション	<b>適用あり:</b> WB, IHC-P
種交差性	<b>交差種:</b> Rat, Human
免疫原	Synthetic peptide corresponding to Mouse MC4-R aa 1-100 (N terminal). Database link: <a href="#">P56450</a>
	 <a href="#">Run BLAST with</a>  <a href="#">Run BLAST with</a>

#### 特記事項

This antibody mainly detects an unglycosylated protein at 37kDa and a glycosylated protein at 55kDa.

The Life Science industry has been in the grips of a reproducibility crisis for a number of years. Abcam is leading the way in addressing this with our range of recombinant monoclonal antibodies and knockout edited cell lines for gold-standard validation. Please check that this product meets your needs before purchasing.

If you have any questions, special requirements or concerns, please send us an inquiry and/or contact our Support team ahead of purchase. Recommended alternatives for this product can be found below, along with publications, customer reviews and Q&As

#### 製品の特性

製品の状態	Liquid
保存方法	Shipped at 4°C. Store at +4°C short term (1-2 weeks). Upon delivery aliquot. Store at -20°C. Avoid freeze / thaw cycle.
バッファー	pH: 7.40 Preservative: 0.02% Sodium azide Constituents: Tris buffered saline, 50% Glycerol, 0.1% BSA
精製度	Protein A purified
一次抗体 備考	This antibody mainly detects an unglycosylated protein at 37kDa and a glycosylated protein at 55kDa.
ポリ/モノ	ポリクローナル

アイソタイプlgG

アプリケーション

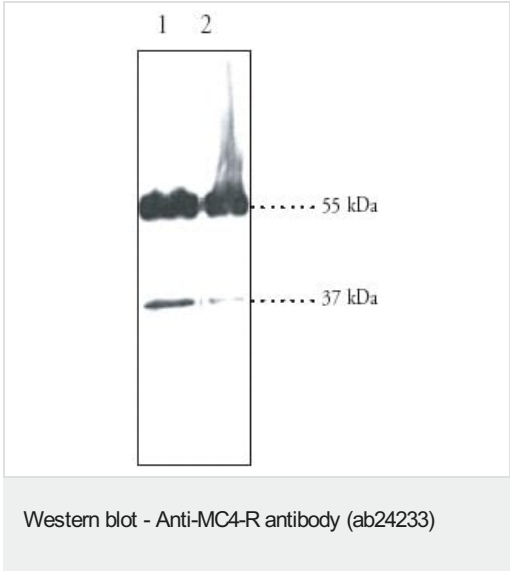
The Abpromise guarantee      Abpromise保証は、次のテスト済みアプリケーションにおけるab24233の使用に適用されます  
アプリケーションノートには、推奨の開始希釈率がありますが、適切な希釈率につきましてはご検討ください。

アプリケーション	Abreviews	特記事項
WB	★★★★★ (6)	Use a concentration of 2 µg/ml. Detects a band of approximately 37 kDa (predicted molecular weight: 37 kDa). A larger band is also detected at 55 kDa. This most likely represents the glycosylated form of the protein.
IHC-P	★★★★★ (1)	Use a concentration of 1 µg/ml.

ターゲット情報

機能	Receptor specific to the heptapeptide core common to adrenocorticotrophic hormone and alpha-, beta-, and gamma-MSH. This receptor is mediated by G proteins that stimulate adenylate cyclase.
組織特異性	Brain, placental, and gut tissues.
関連疾患	Defects in MC4R are a cause of obesity (OBESITY) [MIM:601665]. It is a condition characterized by an increase of body weight beyond the limitation of skeletal and physical requirements, as the result of excessive accumulation of body fat.
配列類似性	Belongs to the G-protein coupled receptor 1 family.
細胞内局在	Cell membrane.

画像

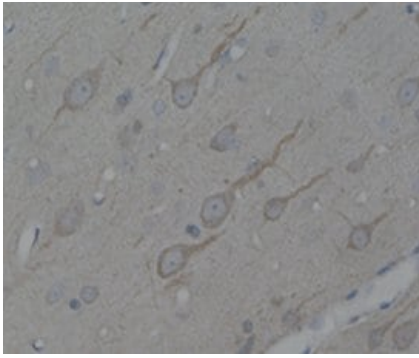


**All lanes :** Anti-MC4-R antibody (ab24233)

**Lane 1 :** Human cerebella cortex pellet.  
**Lane 2 :** Human hippocampus homogenate.

Lysates/proteins at 30 µg per lane.

**Predicted band size:** 37 kDa  
**Additional bands at:** 55 kDa (possible glycosylated form)



Immunoperoxidase staining of rat brain section with ab24233. Note the tadpole like staining of cortex neurons.

Immunohistochemistry (Formalin/PFA-fixed paraffin-embedded sections) - Anti-MC4-R antibody (ab24233)

**Please note:** All products are "FOR RESEARCH USE ONLY. NOT FOR USE IN DIAGNOSTIC PROCEDURES"

### Our Abpromise to you: Quality guaranteed and expert technical support

---

- Replacement or refund for products not performing as stated on the datasheet
- Valid for 12 months from date of delivery
- Response to your inquiry within 24 hours
- We provide support in Chinese, English, French, German, Japanese and Spanish
- Extensive multi-media technical resources to help you
- We investigate all quality concerns to ensure our products perform to the highest standards

If the product does not perform as described on this datasheet, we will offer a refund or replacement. For full details of the Abpromise, please visit <https://www.abcam.co.jp/abpromise> or contact our technical team.

### Terms and conditions

---

- Guarantee only valid for products bought direct from Abcam or one of our authorized distributors