


Anti-MC-2 antibody ab87470

画像数 1

製品の概要

製品名	Anti-MC-2 antibody
製品の詳細	Rabbit polyclonal to MC-2
由来種	Rabbit
アプリケーション	適用あり: WB
種交差性	交差種: Human 交差が予測される動物種: Mouse, Hamster, Chimpanzee, Macaque monkey, Gorilla 
免疫原	Synthetic peptide corresponding to Human MC-2 aa 50-150 conjugated to keyhole limpet haemocyanin. (Peptide available as ab125889)
ポジティブ・コントロール	This antibody gave a positive signal in Human Skeletal Muscle tissue lysate.
特記事項	<p>The Life Science industry has been in the grips of a reproducibility crisis for a number of years. Abcam is leading the way in addressing this with our range of recombinant monoclonal antibodies and knockout edited cell lines for gold-standard validation. Please check that this product meets your needs before purchasing.</p> <p>If you have any questions, special requirements or concerns, please send us an inquiry and/or contact our Support team ahead of purchase. Recommended alternatives for this product can be found below, along with publications, customer reviews and Q&As</p>

製品の特性

製品の状態	Liquid
保存方法	Shipped at 4°C. Store at +4°C short term (1-2 weeks). Upon delivery aliquot. Store at -20°C or -80°C. Avoid freeze / thaw cycle.
バッファー	pH: 7.40 Preservative: 0.02% Sodium azide Constituents: 1% BSA, PBS Batches of this product that have a concentration < 1mg/ml may have BSA added as a stabilising agent. If you would like information about the formulation of a specific lot, please contact our scientific support team who will be happy to help.
精製度	Immunogen affinity purified

ポリ/モノ	ポリクローナル
アイソタイプ	IgG

アプリケーション

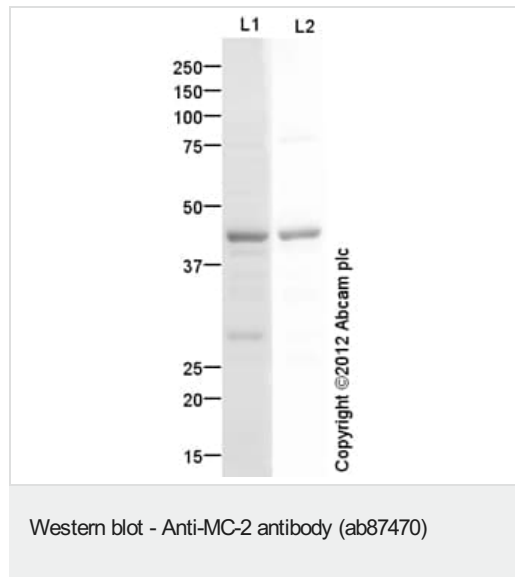
The Abpromise guarantee **Abpromise保証は、** 次のテスト済みアプリケーションにおけるab87470の使用に適用されます
 アプリケーションノートには、推奨の開始希釈率がありますが、適切な希釈率につきましてはご検討ください。

アプリケーション	Abreviews	特記事項
WB		Use a concentration of 1 µg/ml. Detects a band of approximately 43 kDa (predicted molecular weight: 37 kDa).

ターゲット情報

機能	Receptor for MSH (alpha, beta and gamma) and ACTH. The activity of this receptor is mediated by G proteins which activate adenylate cyclase. This receptor is a possible mediator of the immunomodulation properties of melanocortins.
組織特異性	Expressed in the brain but not in the melanoma cells.
配列類似性	Belongs to the G-protein coupled receptor 1 family.
細胞内局在	Cell membrane.

画像



Lane 1 : Anti-MC-2 antibody (ab87470) at 1 µg/ml (Blocked in 5% BSA)

Lane 2 : Anti-MC-2 antibody (ab87470) at 1 µg/ml (Blocked in 3% MILK)

All lanes : Human skeletal muscle tissue lysate - total protein ([ab29330](#))

Lysates/proteins at 10 µg per lane.

Secondary

Lane 1 : Goat Anti-Rabbit IgG H&L (HRP) preadsorbed ([ab97080](#)) at 1/5000 dilution

Lane 2 : Recombinant rat MCP1 protein ([ab9780](#)) at 1/5000 dilution

Developed using the ECL technique.

Performed under reducing conditions.

Predicted band size: 37 kDa

Observed band size: 43 kDa

Exposure time: 2 minutes

MC-2 contains a number of potential glycosylation sites (SwissProt) which may explain its migration at a higher molecular weight than predicted. Abcam recommends using milk (3%) as the blocking agent. Abcam welcomes customer feedback and would appreciate any comments regarding this product and the data presented above.

Please note: All products are "FOR RESEARCH USE ONLY. NOT FOR USE IN DIAGNOSTIC PROCEDURES"

Our Abpromise to you: Quality guaranteed and expert technical support

- Replacement or refund for products not performing as stated on the datasheet
- Valid for 12 months from date of delivery
- Response to your inquiry within 24 hours
- We provide support in Chinese, English, French, German, Japanese and Spanish
- Extensive multi-media technical resources to help you
- We investigate all quality concerns to ensure our products perform to the highest standards

If the product does not perform as described on this datasheet, we will offer a refund or replacement. For full details of the Abpromise, please visit <https://www.abcam.co.jp/abpromise> or contact our technical team.

Terms and conditions

- Guarantee only valid for products bought direct from Abcam or one of our authorized distributors