


# Anti-MBD4/MED1 antibody ab84754

**2 References**   [画像数 2](#)

### 製品の概要

製品名	Anti-MBD4/MED1 antibody
製品の詳細	Rabbit polyclonal to MBD4/MED1
由来種	Rabbit
アプリケーション	<b>適用あり:</b> IHC-P
種交差性	<b>交差種:</b> Human <b>交差が予測される動物種:</b> Chimpanzee, Gorilla 
免疫原	Synthetic peptide corresponding to Human MBD4/MED1 aa 1-50 (N terminal). Database link: <a href="#">NP_003916.1</a>
ポジティブ・コントロール	Human Breast Carcinoma, Linitis Plastica Stomach Cancer, Ovarian Carcinoma and Testicular Seminoma tissues.
特記事項	<p>The Life Science industry has been in the grips of a reproducibility crisis for a number of years. Abcam is leading the way in addressing this with our range of recombinant monoclonal antibodies and knockout edited cell lines for gold-standard validation. Please check that this product meets your needs before purchasing.</p> <p>If you have any questions, special requirements or concerns, please send us an inquiry and/or contact our Support team ahead of purchase. Recommended alternatives for this product can be found below, along with publications, customer reviews and Q&amp;As</p>

### 製品の特性

製品の状態	Liquid
保存方法	Shipped at 4°C. Upon delivery aliquot and store at -20°C. Avoid freeze / thaw cycles.
バッファー	pH: 6.8 Preservative: 0.09% Sodium azide Constituents: 0.1% BSA, Tris buffered saline
精製度	Immunogen affinity purified
特記事項 (精製)	ab84754 was affinity purified using an epitope specific to MBD4/MED1 immobilized on solid support.
ポリ/モノ	ポリクローナル
アイソタイプ	IgG

## アプリケーション

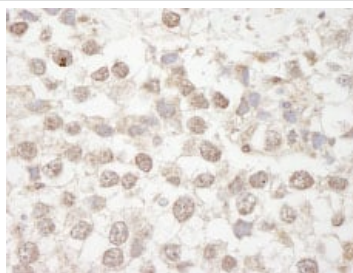
**The Abpromise guarantee** Abpromise保証は、 次のテスト済みアプリケーションにおけるab84754の使用に適用されます  
アプリケーションノートには、推奨の開始希釈率がありますが、適切な希釈率につきましてはご検討ください。

アプリケーション	Abreviews	特記事項
IHC-P		1/100 - 1/500. Antigen retrieval is not essential but may optimise staining. The use of citrate buffer will enhance staining.

## ターゲット情報

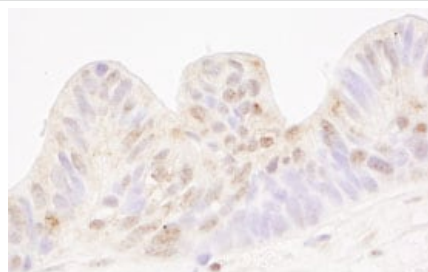
機能	Mismatch-specific DNA N-glycosylase involved in DNA repair. Has thymine glycosylase activity and is specific for G:T mismatches within methylated and unmethylated CpG sites. Can also remove uracil or 5-fluorouracil in G:U mismatches. Has no lyase activity. Was first identified as methyl-CpG-binding protein.
配列類似性	Contains 1 MBD (methyl-CpG-binding) domain.
細胞内局在	Nucleus.

## 画像



ab84754 at 1/250 dilution staining MBD4/MED1 in Human testicular seminoma by Immunohistochemistry, Formalin-fixed, Paraffin-embedded tissue. Detection: DAB staining.

Immunohistochemistry (Formalin/PFA-fixed paraffin-embedded sections) - Anti-MBD4/MED1 antibody (ab84754)



ab84754 at 1/250 dilution staining MBD4/MED1 in Human ovarian tumor by Immunohistochemistry, Formalin-fixed, Paraffin-embedded tissue. Detection: DAB staining.

Immunohistochemistry (Formalin/PFA-fixed paraffin-embedded sections) - Anti-MBD4/MED1 antibody (ab84754)

**Please note:** All products are "FOR RESEARCH USE ONLY. NOT FOR USE IN DIAGNOSTIC PROCEDURES"

### **Our Abpromise to you: Quality guaranteed and expert technical support**

---

- Replacement or refund for products not performing as stated on the datasheet
- Valid for 12 months from date of delivery
- Response to your inquiry within 24 hours
  
- We provide support in Chinese, English, French, German, Japanese and Spanish
- Extensive multi-media technical resources to help you
- We investigate all quality concerns to ensure our products perform to the highest standards

If the product does not perform as described on this datasheet, we will offer a refund or replacement. For full details of the Abpromise, please visit <https://www.abcam.co.jp/abpromise> or contact our technical team.

### **Terms and conditions**

---

- Guarantee only valid for products bought direct from Abcam or one of our authorized distributors